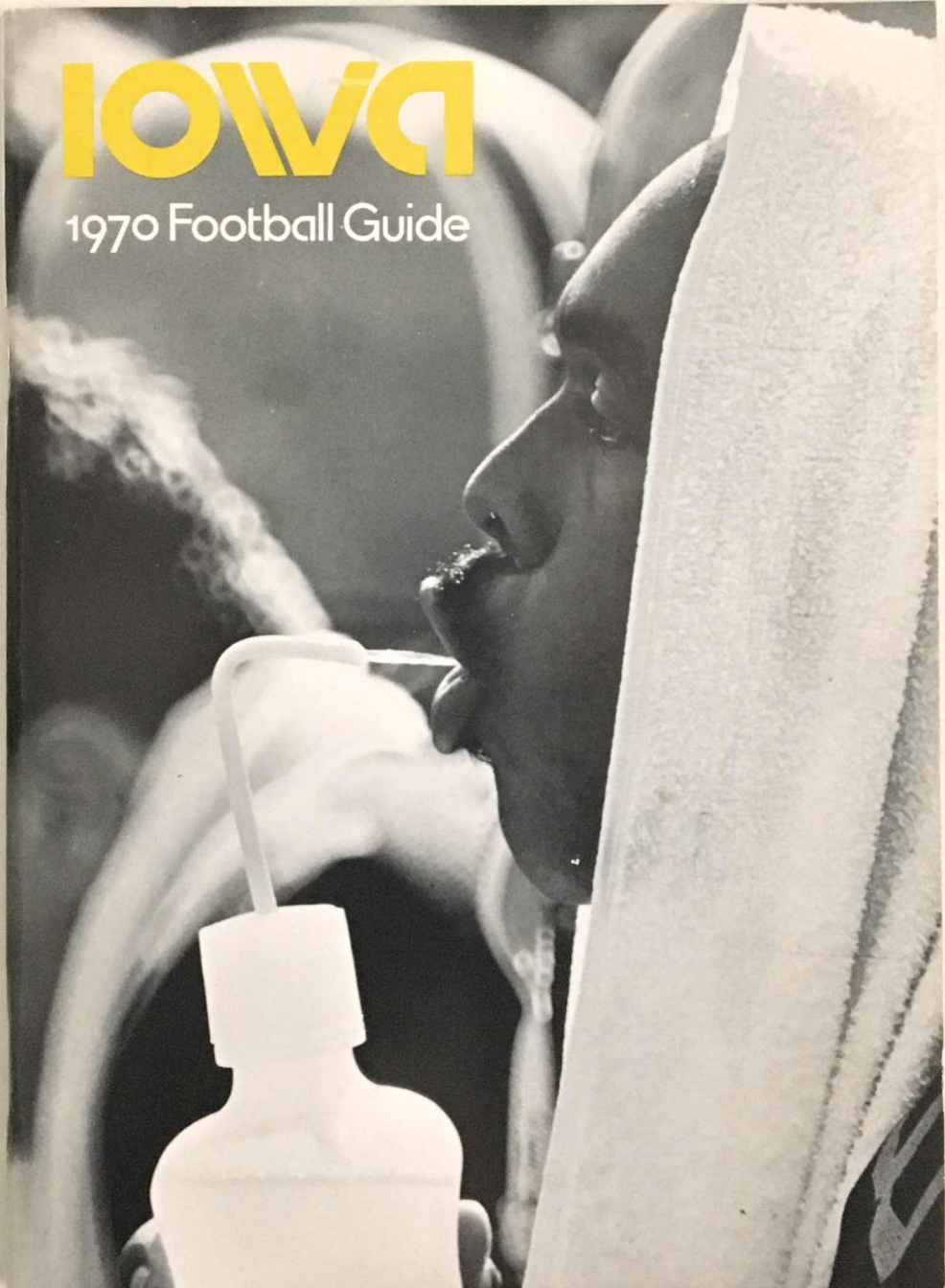


IOWA

1970 Football Guide



News Media Information

IOWA STADIUM is located on the west campus in the heart of the University's athletic complex. It is a few minutes' drive from Interstate 80 and the Iowa City airport, about 30 minutes from the Cedar Rapids airport.

PRESSBOX at Iowa Stadium is on the west side and accessible by elevator.

One of the nation's finest, it was completed 12 years ago at a cost of \$490,000 (cost to build Iowa Stadium was \$500,000 in 1929). The first deck has 89 seats for working press. The second deck contains 10 booths for radio and television. The third deck is for photographers and has additional radio booths. The fourth deck, not enclosed, is used in various ways. A pregame lunch is served on the first and second decks. The pressbox is 100 feet high and extends between the 25-yard lines.

TICKET REQUESTS should be directed to George Wine, sports information director. Requests should be filed early enough in advance to allow time for processing.

ATHLETIC OFFICES are located on the east side of the Iowa Fieldhouse.

The Fieldhouse is also on the west campus, near the stadium.

MOTELS in the immediate Iowa City area include the Alamo Inn (338-3687), Carousel (351-6324), Clayton House (338-1186), Hawkeye Lodge (338-3651), Holiday Inn (338-9771), Howard Johnson Lodge (338-7841), Old Capitol Inn (338-7901), Ramada Inn (645-2940), Rebel Motel (338-9251).



YOUR HOSTS in Iowa Stadium pressbox are George Wine (left) and Tim Simmons of the Hawkeye sports information office.

Wine has been in public relations work since 1956 and with the Iowa staff since 1968. A native of North English, Iowa, he is a graduate of Iowa and an Air Force veteran. George and his wife Anne have a son, Steve. Wine was born 6/9/31.

Simmons is in his first full-time year at Iowa after serving as a graduate intern. A native of Pueblo, Colo., he was named the outstanding graduating senior in mass communications at Southern Colorado. Born 4/27/47.

The University of Iowa

1970 Football Guide and Record Book

Table of Contents

1970 Schedule	2	All-Time Opponents	41
1969 Results	2	Series Scores	42-43
Athletic Staff Directory	3	Iowa in the Top Ten	43
The Athletic Director	4	Largest Home Crowds	44
The Head Coach	5	Attendance Past 20 Years	44
Assistant Coaches	6-7	Largest Road Crowds	45
Key Staff Members	8	Most Valuable Hawkeyes	45
Big Ten Schedule	9	Past Iowa Captains	46
1969 Big Ten Standings	9	All-Big Ten Hawkeyes	47
The Outlook	10	All-America Hawkeyes	48-49
Preseason Depth	11	Hawkeyes in Post-Season	
Hawkeye Profiles	12-21	Games	50-51
Future Iowa Schedules	22	Historical Highlights	52
Road Headquarters	23	Television Appearances	53
Numerical Roster	23	Best Performances	54-58
The 1970 Opponents	24-33	Iowa's All-Time Team	59
Alphabetical Roster	34-35	Team Records	59
1969 Team Statistics	36	Individual Records	60-61
1969 Individual Statistics	37	Scores by Years	62-65
1969 Game Summaries	38-39	Record by Years	66-67
1969 Game Statistics	40	Herky	68
Hall of Fame Hawkeyes	40	Floyd of Rosedale	68

*Compiled and edited by The University of Iowa Sports Information Office.
Distributed free to news media. Available to public for \$1 per copy.*

Number, Please . . .

(The Iowa City area code is 319)

	Office	Home		Office	Home
Elliott	353-3810	338-9950	Simmons	353-3038	338-3076
Fontes	353-5410	338-7662	Stiles	353-5743	337-9570
Gilliam	353-4183	351-2123	Tamburo	353-3919	351-4106
Graham	353-4216	337-7882	Tryon	353-5647	351-2280
Nagel	353-5070	351-2287	Tynes	353-5525	337-9112
Roberts	353-5250	338-1332	Wine	353-3038	337-3933

ON THE COVERS—Co-Captains Ray Manning (front cover) and Dan McDonald (back cover) are the men who will lead Iowa through a rugged 10-game schedule.

1970 Schedule

Date	Opponent	Site	Time
Sept. 19	Oregon State	Corvallis	8:00 PDT
Sept. 26	Southern California ..	Iowa City	1:30 CDT
Oct. 3	Arizona	Tucson	7:30 MST
Oct. 10	Wisconsin	Iowa City	1:30 CDT
*Oct. 17	Purdue	Iowa City	1:30 CDT
Oct. 24	Michigan State	East Lansing	1:30 EST
Oct. 31	Minnesota	Minneapolis	1:30 CDT
**Nov. 7	Indiana	Iowa City	1:30 CST
Nov. 14	Michigan	Ann Arbor	1:30 EST
Nov. 21	Illinois	Iowa City	1:30 CST

**Homecoming . . . **Dad's Day*

HOME GAMES will be played in Iowa Stadium, capacity 60,000

1969 Results

Won 5, Lost 5, Tied 0

Game and Score	Site	Attendance
Oregon StateL 14-42.....	Iowa City	51,800
Washington State ...W 61-35.....	Iowa City	43,231
Arizona	Iowa City	47,391
Wisconsin	Madison	53,714
Purdue	Lafayette	65,971
Michigan StateW 19-18.....	Iowa City	56,471
Minnesota	Iowa City	56,413
Indiana	Bloomington	53,854
Michigan	Iowa City	45,981
Illinois	Champaign	30,257

Home Attendance, 301,287

Total Attendance, 505,083

Iowa Points, 255

Opponents' Points, 275

Athletic Staff

Athletic Director	Chalmers (Bump) Elliott (Michigan, '48)
Associate Athletic Director	Francis (Bus) Graham
I-Club Secretary	Bud Suter (Drake, '38)
Sports Information Director	George Wine (Iowa, '56)
Assistant Sports Info. Dir., ..	Tim Simmons (Southern Colo., '69)
Academic Counselor	Leonard Raffensperger (Iowa, '27)
Medical Supervisor	Dr. W. D. Paul (Cincinnati, '29)
Physical Therapist	Tom Spalj (St. John's, Minn., '63)
Assistant Trainer	Gary Derscheid (Ohio State, '69)
Equipment Manager	Ron Fairchild (Iowa, '53)
Maintenance Supervisor	Darrell Brown

Coaching Staff

Football Coach	Ray Nagel (UCLA, '50)
Assistant	Wayne Fontes (Michigan State, '62)
Assistant	Frank Gilliam (Iowa, '57)
Assistant	Harold Roberts (Bemidji State, '60)
Assistant	Lynn Stiles (Utah, '63)
Assistant	Dick Tamburo (Michigan State, '54)
Assistant	Dale Tryon (Buena Vista, '57)
Assistant	John (Bud) Tynes (Utah, '63)
Basketball Coach	Dick Schultz (Central, Ia., '50)
Assistant	Bob Greenwood (Ohio, '50)
Assistant	Dick Kuchen (Rider, N.J., '66)
Wrestling Coach	Dave McCuskey (Iowa Teachers, '31)
Assistant	Gary Kurdelmeier (Iowa, '58)
Gymnastics Coach	Dick Holzaepfel (Michigan, '41)
Assistant	Neil Schmitt (Iowa, '70)
Swimming Coach	Robert Allen (Iowa, '39)
Track and Cross Country Coach	Francis Cretzmeyer (Iowa, '36)
Baseball Coach	Duane Banks (Northern Colo., '65)
Tennis Coach	John Winnie (Cornell, Ia., '36)
Golf Coach	Charles Zwiener (Minnesota, '50)

The Athletic Director

CHALMERS (BUMP) ELLIOTT, whose background includes 23 years in the Big Ten as player, coach, and administrator, is the new athletic director at Iowa. He has been personally in-



involved in five Big Ten football championships and five Rose Bowl appearances. The personable Elliott, a former star at Michigan, came to Iowa from his alma mater, where he had been associate athletic director for 18 months.

Bump is no stranger to Iowa fans. He was a popular assistant football coach with the Hawkeyes for five years and was instrumental in a Big Ten championship and Rose Bowl victory in 1956.

Elliott played three sports at Michigan in 1946-47-48. A brilliant halfback, he topped the Big Ten in scoring in 1947 with 54 points and spurred the Wolverines to Big Ten and Rose Bowl championships. He led his team in pass receiving and averaged more than 5 yards a carry. He earned All-America honors, as did his brother Pete, a Michigan quarterback. Bump also played parts of two seasons (1943-44) as a Marine trainee at Purdue. He was the Big Ten's MVP in 1947.

Bump coached football for 21 years, the last 10 as head coach at Michigan. His tenure there was highlighted by a Big Ten championship and Rose Bowl victory in 1964. His record with the Wolverines was 51-41-2. He served as an assistant coach at Oregon State (1948-51), Iowa (1952-56), and Michigan (1957-58) before he took the head job there. He recruited the Wolverine team that won a Big Ten co-championship in 1969.

Elliott is a native of Bloomington, Ill. His father, Dr. J. Norman Elliott, was a physician there and also coached at Illinois Wesleyan and Northwestern. Bump was discharged from the Marines in 1946 and earned his degree at Michigan in 1948. He and his wife Barbara have three children: Bill, Bob, and Betsy. He was born in Detroit Jan. 30, 1925.

The Head Coach

RAY NAGEL has experienced some turbulent times in four seasons at Iowa, but through it all he has maintained his equilibrium and sense of humor, and he starts the 1970 season with



what may be the most solid Hawkeye team in a decade.

One thing is certain: Ray has made Iowa a very respectable football team, and he had a long way to go when he became head coach. The Hawkeyes had won only once in 13 Big Ten outings when Ray arrived in December, 1965. After two years of struggling, Ray's rookie-dominated team came on strong in 1968, won four of their final six games and jumped into the Big Ten's first division.

Prospects were really bright in 1969, but a black boycott in the spring was a disturbing factor that lingered through fall. The loss of the top two running backs because of injury and academics did not do anything to help continuity. "It was the most difficult season I ever experienced," said Nagel candidly.

Nagel came to Iowa after an eight-year tenure at Utah, where his successes included a 1964 conference championship and a Liberty Bowl victory. When he took the job, he was only 30, making him the nation's youngest major college football coach. His record at Utah was 42-39-1.

Ray enjoyed a fine career at UCLA as a quarterback and safety. His best season was 1948 when he ranked with the top passers in college football. A year later he helped the Bruins beat Iowa, 41-25. Perhaps the only college football coach who holds a law degree, Nagel was on the UCLA staff in 1950-52, was player-coach of the Chicago Cardinals in 1953, and was on the Oklahoma staff a year before returning to UCLA. His next move was to Utah.

Ray and his wife Shirley have five children: Nancy, Bruce (an Iowa tennis player), Tom, Ray, Jr., and Scott. He was born in Los Angeles May 18, 1927.

Assistant Coaches

WAYNE FONTES—Defensive Backs

Wayne joined the Iowa staff in 1968 after serving as a defensive coach at Dayton for two years. He was a fine defensive back at Michigan State. Following his senior season he played in two postseason games. Fontes played with the New York Titans two seasons. He coached at Bay City, Mich., two years and won the league title in 1965. A native of Canton, Ohio, Wayne and his wife Evelyn have three children: Michael, Scott, and Kimberley. Born 2/17/39.

FRANK GILLIAM—Offensive Ends and Flankers

A four-year veteran on the Iowa staff, Frank led Iowa in pass receiving in 1953 and 1954. A broken leg sidelined him in 1955, but he came back the following season to play a key role in Big Ten and Rose Bowl championships. Gilliam, a member of Iowa's all-time team, played with Vancouver in the Canadian League five years. He coached in the Vancouver school system prior to coming to Iowa. A Steubenville, Ohio, native, Frank and his wife Velma have three children: Frank, Jr., Gayle, and Michelle. Born 1/7/34.

HAROLD ROBERTS—Freshmen

Roberts joined the Iowa staff in December, 1969, after serving as a graduate assistant for two seasons. A native of Worthington, Minn., he coached at George, Iowa, and Fenton, Mich. His George teams produced two Hawkeyes, Jon Riemer and Dave Krull, and he had a class B state championship track team there in 1963. His Fenton teams were 17-1 in two seasons. Harold is single, a graduate of Bemidji State and an Army veteran. Born 10/13/39.

LYNN STILES—Defensive Line

A former all-league guard in the Western Athletic Conference, Stiles played at Utah for Ray Nagel. He joined the Utah staff after graduation, then became a Hawkeye aide when Nagel took the Iowa job. He played in the 1962 All-American Bowl and was named to the WAC academic team. A native of Reno, Nev., Lynn and his wife Marigene have two children, Staci Lee and Shon Lynn. Born 4/12/41.



Fontes



Gilliam



Roberts



Stiles

DICK TAMBURO—Defensive Coordinator

Dick is in his fourth year at Iowa after serving on the Arizona State staff nine years. He won all-state honors at New Kensington, Pa., then became an All-America center for Michigan State's 1952 national champions. He played in the East-West, Senior Bowl, and College All-Star postseason games. After getting a degree in police administration, Tamburo played briefly with Hamilton in the Canadian League. The Army veteran and his wife Marie have three children: Debbie, Tamara, and Rick. Born 2/6/30.

DALE TRYON—Offensive Backs

Tryon joined the Iowa staff in February. His teams at Manson, Audubon, and Cedar Rapids Kennedy had a record of 82-17-1 in 13 seasons. They included six league titles and five unbeaten seasons. Dale was named Iowa's coach of the year in 1966. He played football and baseball at Buena Vista and is a native of Glidden. Dale and his wife Janet have four children: Jodie, Danny, Donnie, and David. Born 11/7/35.

JOHN (BUD) TYNES—Offensive Coordinator

Tynes has been with Ray Nagel since 1958 when Ray recruited him at Utah. Bud was the Utes' starting fullback for three years and won all-Western Athletic Conference honors in 1961. He joined the Utah staff after graduation and came to Iowa with Nagel. Bud, a native of Placentia, Calif., and his wife Lyn have two children: Mat and Nathan. Born 8/4/40.

Graduate Assistants

Jon Meskimen, a two-time All-Big Ten offensive guard, is one of a half-dozen graduate students helping with the Iowa football program. Chris Hamilton, the Hawkeyes' safety last year, is another. John Kawala is in his second year helping with the varsity. Bob Gruver, Jerry Senters, and Kim Markhausen are on the freshman staff.



Tamburo



Tryon



Tynes

Key Staff Members

FRANCIS (BUS) GRAHAM—Associate Athletic Director

A longtime Iowa City resident, Bus Graham has been handling athletic business matters and ticket sales at Iowa since 1952. Prior to that he was employed for 16 years by a Davenport baking firm and two years by an Iowa City insurance company. He also was a Big Ten football and basketball official for five years before joining the Hawkeye staff. Bus and his wife Viola have two daughters. Born 2/23/12.

BUD SUTER—I-Club Secretary

Bud Suter is a graduate of Drake, where he was an all-conference half-back and played on the basketball team. He served a successful six-year stint as baseball and basketball coach at Mason City, his hometown. He later became known as one of the state's top sportscasters while working with the KGLO stations in Mason City. He has been on the Iowa staff since 1955. Bud and his wife Jean have five children. Born 6/13/14.

DR. W. D. PAUL—Medical Supervisor

W. D. (Shorty) Paul has been a familiar figure to Iowa football fans since 1939. He is a native of Brooklyn, N.Y., and received two degrees from Cincinnati. He is affiliated with more than a dozen professional organizations and has authored many articles in medical journals. Dr. Paul has been on the staff of the Iowa College of Medicine since 1930 and has been instrumental in the development of a number of drugs, including Bufferin and Roloids. His wife's name is Louise. Born 1/31/00.

TOM SPALJ—Physical Therapist

Tom Spalj (pronounced Spile) has been helping Hawkeye athletes recover from various ailments since 1964. His home is Crosby, Minn., where he was a student trainer and developed an interest in treating wounded athletes. He holds a bachelor's degree from St. John's (Minn.) and a physical therapy degree from Iowa. Tom and his wife Nancy have two children. Born 12/10/40.



Graham



Suter



Paul



Spalj

Big Ten Championship Schedule

75th Season

October 10

Wisconsin at Iowa
Ohio State at Michigan State
Indiana at Minnesota
Illinois at Northwestern
Michigan at Purdue

October 17

Indiana at Illinois
Purdue at Iowa
Michigan State at Michigan
Minnesota at Ohio State
Northwestern at Wisconsin

October 24

Ohio State at Illinois
Wisconsin at Indiana
Minnesota at Michigan
Iowa at Michigan State
Purdue at Northwestern

October 31

Michigan State at Indiana
Iowa at Minnesota
Northwestern at Ohio State
Illinois at Purdue
Michigan at Wisconsin

November 7

Indiana at Iowa
Illinois at Michigan
Purdue at Michigan State
Minnesota at Northwestern
Ohio State at Wisconsin

November 14

Wisconsin at Illinois
Northwestern at Indiana
Iowa at Michigan
Michigan State at Minnesota
Ohio State at Purdue

November 21

Illinois at Iowa
Northwestern at Michigan State
Michigan at Ohio State
Indiana at Purdue
Minnesota at Wisconsin

1969 Big Ten Standings

Conference Games

	W	L	Pct.	Pt. Avg.	Opp. Avg.
Michigan	6	1	.857	35.0	11.0
Ohio State	6	1	.857	40.0	11.3
Purdue	5	2	.714	35.4	25.7
Minnesota	4	3	.571	19.3	19.3
Indiana	3	4	.429	24.7	23.6
Iowa	3	4	.429	21.3	25.6
Northwestern	3	4	.429	17.3	26.7
Wisconsin	3	4	.429	20.7	32.0
Michigan State	2	5	.286	17.7	23.3
Illinois	0	7	.000	8.9	41.9

All Games

	W	L	T	Pct.	Pt. Avg.	Opp. Avg.
Michigan	8	2	0	.800	34.9	13.8
Ohio State	8	1	0	.889	42.6	10.3
Purdue	8	2	0	.800	35.4	26.4
Minnesota	4	5	1	.450	21.0	26.0
Indiana	4	6	0	.400	25.2	24.2
Iowa	5	5	0	.500	25.5	27.5
Northwestern	3	7	0	.300	13.7	30.6
Wisconsin	3	7	0	.300	19.6	34.9
Michigan State	4	6	0	.400	20.2	23.1
Illinois	0	10	0	.000	10.6	39.7

The Outlook

OFFENSIVELY the Hawkeyes will be strong for the third straight year. They are exceptionally deep in running backs and receivers. Uncertain areas are quarterback and the interior line.

Fullbacks include Tim Sullivan, who starred as a junior and missed last season after a motorcycle accident. His status is still uncertain, but even if he can't play, there are Steve Penney, top ground gainer last season, and Frank Holmes, who was very impressive in spring drills. Veteran Levi Mitchell and Dave (The Rave) Harris will be an outstanding tailback tandem.

Ends Kerry Reardon and Ray Manning, and wingback Dennis Green, had a combined 86 pass receptions for 1,223 yards and 10 touchdowns in 1969. Although there is no proven quarterback in Iowa's camp, there is every reason to think Roy Bash, a converted tight end, can handle the No. 1 job. The Hawkeyes should present a well-balanced attack and have the threat of the home run play.

DEFENSIVELY there should be dramatic improvement over a team that gave up 275 points last year. Veterans are plentiful, and a basic 4-3 defensive set has been installed. The front four looks imposing, led by end Layne McDowell and tackle Bill Windauer.

Some rookie linebackers will have to come through, and two of the best are Buster Hoinkes and Tom Cabalka. Dan McDonald made a smooth conversion to linebacker from end, where he was a two-year regular. A letterman anchors every spot in the secondary and there are even some veterans in reserve. Top defensive back is Craig Clemons.

KICKING duties will probably be handled by two veterans. Kerry Reardon has averaged 37.5 yards in punting the last two seasons. Rookie Frank Sunderman will back him up. Marcos Melendez kicked 40 of 44 conversions as a sophomore, then lost his job last year because of injuries.

MAJOR LOSSES include quarterbacks Larry Lawrence and Mike Cilek, whose departure leaves the Hawkeyes without a seasoned signal caller. All-Big Ten Jon Meskimen, Paul Laaveg, and Mel Morris will be missed in the offensive line. End Bill Bevill and linebackers Larry Ely and Rod Barnhart are key absentees on defense.

TOP SOPHOMORES are tailback Dave Harris, linebackers Buster Hoinkes and Tom Cabalka, and defensive end Mike Dillner, although several other rookies are expected to make strong contributions.

COACH NAGEL SAYS: "This is the best football squad I have had in five years at Iowa. We have veterans starting at virtually every position and some excellent sophomores backing them up. Our defense should be greatly improved, and our offense, particularly the running game, should be very good. Michigan and Ohio State look like the favorites in the Big Ten, although with a break or two we could be in contention."

Preseason Depth

Italicized Players Started Final 1969 Game

Offense

SE—***Kerry Reardon*, 178 Sen.
 WT—***Jim Miller*, 218 Sen.
 WG—**Geoff Mickelson*, 228 Jun.
 C—***Alan Cassady*, 228 Sen.
 SG—Lorin Lynch, 236 Jun.
 ST—**John Muller*, 233 Jun.
 TE—***Ray Manning*, 198 Sen.
 QB—***Roy Bash*, 200 Sen.
 WB—***Dennis Green*, 195 Sen.
 TB—**Levi Mitchell*, 180 Jun.
 FB—**Steve Penney*, 208 Jun.

Dave Triplett, 181 Jun.
 Craig Darling, 225 Soph.
 Rich Lutz, 227 Soph.
 Dave Link, 220 Sen.
 Kelly Disser, 217 Jun.
 Jim Kaiser, 223 Jun.
 Herschel Epps, 200 Sen.
 Alan Schaefer, 183 Jun.
 Jerry Reardon, 170 Soph.
 Dave Harris, 170 Soph.
 Frank Holmes, 205 Jun.

Defense

LE—**Jerry Nelson*, 224 Jun.
 LT—**Bill Windauer*, 241 Jun.
 RT—Charles Podolak, 230 Sen.
 RE—***Layne McDowell*, 232 Sen.
 WLB—***Dave Clement*, 198 Sen.
 MLB—Karl Hoinkes, 217 Soph.
 SLB—***Dan McDonald*, 219 Sen.
 R—**Don Osby*, 186 Jun.
 LHB—**Craig Clemons*, 193 Jun.
 RHB—***Tom Hayes*, 175 Sen.
 S—**Rich Solomon*, 165 Jun.

Mike Dillner, 225 Soph.
 Jim Begale, 243 Soph.
 Wendell Bell, 272 Jun.
 Bill Rose, 230 Soph.
 Dave Simms, 210 Soph.
 **Dave Brooks*, 209 Sen.
 Tom Cabalka, 210 Soph.
 **Jerry Johnson*, 179 Jun.
 Bill Schoonover, 170 Soph.
 ***Ray Cavole*, 185 Sen.
 Charles Cross, 175 Soph.

*Letters Won

Depth for Final Game of 1969

Players in Bold Type on 1970 Roster

Offense

SE—Osby	Krull
WT—Laaveg	Miller
WG—Mickelson	Douglas
C—Cassady	Malmer
SG—Meskimen	Disser
ST—Morris	Muller
TE—Manning	Bash
QB—Lawrence	Cilek
WB— K. Reardon	Triplett
TB— Green	Solomon
FB— Penney	Smith

Defense

RE—Bevill	Pedersen
RT— McDowell	Edwards
MG— Nelson	Allison
LT— Windauer	Stepanek
LE— McDonald	Podolak
RLB— Brooks	Clement
LLB—Ely	Barnhart
R— Johnson	Dunnigan
RHB— Cavole	Schaefer
LHB— Clemons	Hayes
S—Hamilton	Solomon

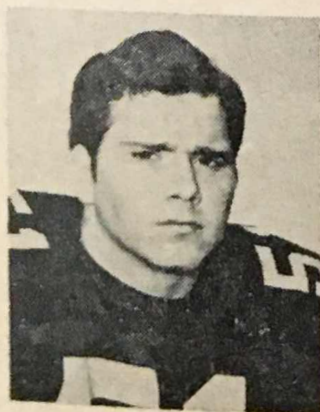
Hawkeye Profiles



Bash



Brooks



Cassady

Roy Bash, QB, 6-2, 200, Sen., Belton, Mo.

Bash emerged as No. 1 quarterback in spring drills after spending two years as a defensive back and tight end. Despite a thumb injury, he passed for 104 yards and one touchdown and ran for another 63 yards and three scores in the spring game. He came to Iowa as a highly-rated quarterback. Starred on the kickoff team in 1968, and opened the 1969 season as the No. 1 defensive rotator. Was later switched to tight end where he caught three passes for 25 yards. Born 1/25/49. Major, business.

Wendell Bell, DT, 6-5, 272, Jun., New Orleans, La.

Bell missed the 1969 season due to the black boycott. Considered an outstanding defensive tackle in spring drills before being injured. Started on defense for the 1968 freshman team. Earned all-everything honors at New Orleans St. Augustine where he played with Iowa's Rich Solomon. Born 9/12/50. Major, business.

Dave Brooks, LB, 6-3, 209, Sen., Webster City, Iowa

Brooks led Iowa in tackles with 59 solos and 43 assists in 1969 after becoming the No. 1 middle linebacker in preseason drills. Saw only limited action as a sophomore. Had an outstanding prep career. Born 4/5/49. Major, business.

Tom Cabalka, LB, 6-4, 210, Soph., Edina, Minn.

Cabalka is considered one of the finest athletes on the squad. He was switched to linebacker in spring practice after catching seven passes for 134 yards and one touchdown as a tight end on the 1969 freshman team. Averaged 10.1 points per game on freshman basketball team last winter. Had an outstanding prep career at Edina where he played with Iowa's Mike Dillner. Born 4/11/51. Major, liberal arts.

Al Cassady, C, 6-2, 228, Sen., Springfield, Ill.

Cassady started at center last fall after spending his sophomore season as a top reserve. Considered one of the steadiest players on the squad, he recovered four fumbled punts in 1969. Played most of his junior season without relief. Earned all-state prep honors at tackle and linebacker. Born 3/28/49. Major, physical education.



Cavole

Ray Cavole, DB, 5-11, 185, Sen., Kansas City, Mo.

Cavole has been one of the team's leading tacklers and pass defenders the past two years. Had 37 solo and 12 assisted tackles in 1969 and owns a two-year total of 68 solos and 24 assists. Has two career pass interceptions. Hampered part of 1969 season due to a summer hernia operation. Born 2/6/49. Major, art.



Clement

Dave Clement, LB, 6-0, 198, Sen., Newton, Iowa

Clement's career has been plagued by injuries. Was a top reserve for last half of 1968 season and was a part-time starter in 1969. Was credited with 26 solo and five assisted tackles last fall. Considered one of the top three linebackers in spring drills. Born 1/31/49. Major, recreation.

Craig Clemons, DB, 6-0, 193, Jun., Piqua, Ohio

Clemons led Iowa in tackles through most of the 1969 season before being sidelined with a shoulder injury. A second-team all-league selection last year, he had 72 solo and 30 assisted tackles, intercepted two and broke up seven passes, and had three tackles for 18 yards lost. Played both ways as a freshman. Had an outstanding prep career and once rushed for over 200 yards and scored four touchdowns in a single game. Born 6/1/49. Major, physical education.

Charles Cross, DB, 6-1, 175, Soph., Dubuque, Iowa

Cross is one of the fastest players on the team. Played both ways as a freshman and concentrated on defense in spring drills. Caught four passes for 157 yards and one touchdown as a freshman. Competed in indoor track last winter. Born 9/27/51. Major, liberal arts.



Clemons

Craig Darling, OT, 6-5, 225, Soph., Cedar Rapids, Ia.

Darling is considered one of the top offensive rookie line prospects. Started at tackle as a freshman. Extremely quick and agile, he averaged 6.4 points per game on freshman basketball team last winter. Helped Cedar Rapids Washington to conference titles in football and baseball and a state championship in basketball. Born 11/30/50. Major, business.



Dillner

Mike Dillner, DE, 6-2, 225, Soph., Edina, Minn.

Dillner is one of the most promising sophomores in Iowa history. Played middle guard as a freshman, but was switched to end after a stint at linebacker in spring drills. An outstanding prep lineman, he and Iowa's Tom Cabalka led Edina to a state football title in 1968. Born 11/26/50. Major, liberal arts.

Kelly Disser, OG, 6-3, 217, Jun., Shawnee, Kan.

Disser is a leading contender for a starting guard spot after playing behind Jon Meskimen last fall. He played both ways as a freshman. Had a fine spring and is considered a capable blocker. Born 2/25/50. Major, business.



Jeff Elgin, DB, 6-1, 188, Soph., West Des Moines, Ia.

One of the best all-around athletes on the squad, Jeff finished spring drills as a defensive back after starting as a quarterback, a position he starred at in high school. He was a bona fide four-sport star at Valley high school, earning all-state honors in football and baseball. He also wrestled and was a hurdler and sprinter in track. Jeff's football coach was his dad, John. Born 2/22/51. Major, business.

Dennis Green, WB, 5-11, 195, Sen., Harrisburg, Pa.

Green has been switched to wingback after starring for two years at tailback. Hampered by injuries, he has rushed for 675 yards and 4.9 average, has caught 20 passes for 206 yards, returned 24 kickoffs for 431 yards and scored 13 touchdowns—nine rushing and four passing—in his two-year career. Rushed for 396 yards, caught 15 passes for 206 yards, and scored seven times last fall. Along with Southern Cal's Jimmy Jones, led Harrisburg to state title in 1966. Born 2/17/49. Major, liberal arts.

Green



Harris

Dave Harris, TB, 5-10, 170, Soph., Dayton, Ohio

Harris, nicknamed The Rave, is one of the most exciting runners ever to enroll at Iowa. Rushed for 199 yards and a 7.9 average as a freshman. He and Levi Mitchell are expected to give the Hawkeyes one of the best tailback duos in the Big Ten. An outstanding prep, he once scored 40 points in a game. Born 12/28/50. Major, liberal arts.



Hayes

Tom Hayes, DB, 6-0, 175, Sen., Atlantic, Iowa

Hayes has been a part-time starter in the defensive secondary for Iowa the last two seasons. An Atlantic teammate of Ed and Charles Podolak, he came to Iowa as a walk-on. Injuries hampered his play for most of the 1969 season. Born 3/26/49. Major, business.



Hoinkes

Karl Hoinkes, LB, 5-11, 217, Soph., McKeesport, Pa.

Hoinkes emerged from spring drills as one of Iowa's top rookies. Nicknamed Buster, he's the only sophomore listed among preseason starters. He played full-back and linebacker on the freshman team. Earned seven letters in three sports in high school. He's one of several fine athletes Iowa has recruited from McKeesport. Born 3/24/51. Major, business.



Holmes

Frank Holmes, FB, 6-0, 205, Jun., Alton, Ill.

Holmes had an outstanding spring after missing the 1969 season due to the black boycott. Rushed nine times for 38 yards in spring scrimmage. Had fine freshman year in 1968. He earned All-American prep honors in 1967. Born 5/14/49. Major, physical education.



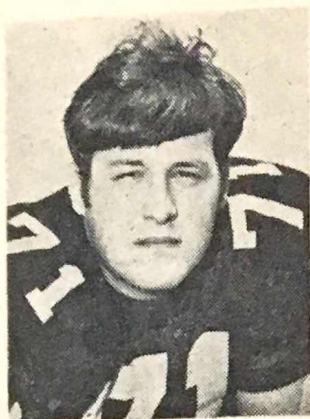
Johnson

Jerry Johnson, DB, 6-1, 179, Jun., Bellaire, Ohio

Johnson missed much of spring drills and saw limited action at the end of the 1969 season due to a shoulder injury. Despite problems, he finished with 34 solo and 29 assisted tackles as Iowa's No. 1 defensive rotator last fall. An outstanding prep, he earned nine letters in football, baseball, and basketball. Born 3/10/50. Major, business.

Jim Kaiser, OT, 6-2, 223, Jun., Park Ridge, Ill.

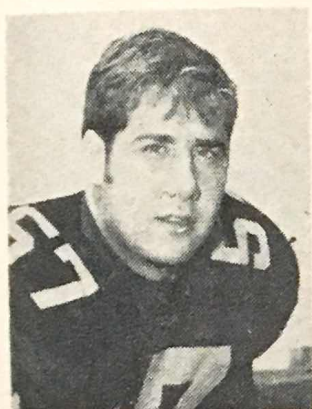
Kaiser had a fine spring after failing to see action as a sophomore in 1969. He should provide plenty of help at offensive tackle. Starred at Maine Township high school. Born 8/15/50. Major, business.



Legler

Chuck Legler, OT, 6-2, 235, Jun., Bettendorf, Iowa

Legler missed the entire 1969 season recovering from knee surgery. He had an excellent season as a sophomore and could be one of the Big Ten's best if healthy. A top-notch wrestler, he was a four-sport star in high school. Born 12/5/49. Major, physical education.



Link

Dave Link, C, 6-4, 220, Sen., Staunton, Ill.

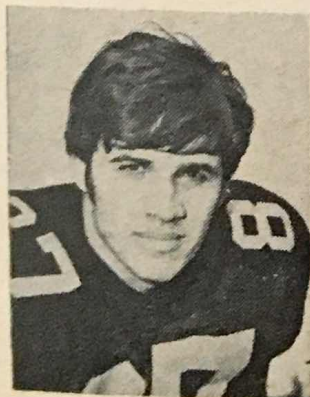
Link has seen action mostly as a defensive lineman, but was switched to center in spring practice. Key member of the specialty teams the past two years. All-state performer in high school. Born 3/23/49. Major, physical education.



Lynch

Rich Lutz, OG, 6-1, 227, Soph., Carbondale, Ill.

Lutz played both offense and defense as a freshman and was moved permanently to offense this spring. A standout in high school, he is the son of former Southern Illinois baseball coach Joe Lutz, who is currently with the Cleveland Indians. Born 10/31/50. Major, liberal arts.



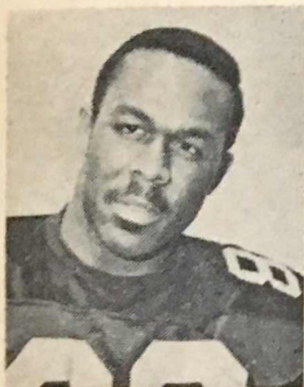
Major

Lorin Lynch, OG, 6-1, 236, Jun., Joliet, Ill.

Lynch was a starter in the spring game after being a reserve in 1969. He played both ways as a freshman. An all-stater at Joliet West high school, he also lettered in baseball. Born 7/9/50. Major, business.

Tony Major, WB, 5-11, 171, Jun., Erie, Pa.

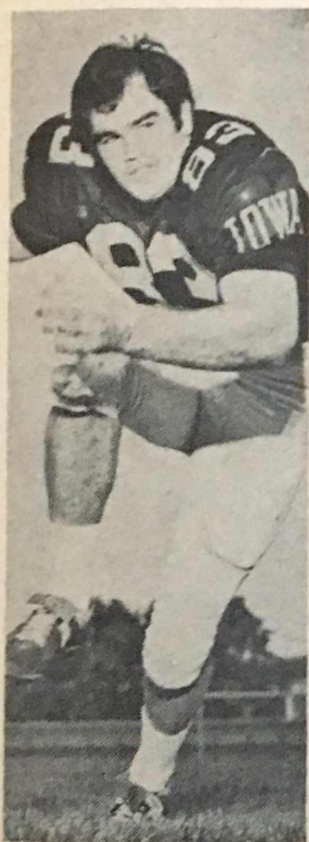
Major missed most of the 1969 season with a hip injury. A starter as a freshman, he had a fine spring. He was chosen the most valuable player in the 1967 Pennsylvania high school all-star game, catching seven passes for 235 yards and two touchdowns. Born 1/19/50. Major, business.



Manning

Ray Manning, TE, 6-4, 198, Sen., Wichita Falls, Tex.

Manning is a co-captain and an All-American candidate. A two-year starter, he ranks fifth on the all-time receiving list with 63 catches, good for 787 yards and seven touchdowns. Ranked third in receiving in the Big Ten as a sophomore. Named to the second-team all-league squad last year and the first-team Big Ten all-academic team the past two years. Caught 28 passes for 361 yards and two touchdowns in 1969. An all-stater at Washington high school. Born 8/15/49. Major, business.



McDonald

Dan McDonald, LB, 6-3, 219, Sen., Saginaw, Mich.

McDonald is co-captain and has been switched from end to linebacker. A two-year regular, he led Iowa in tackles for losses last fall with 11 for 76 yards. He was credited with 62 solo and 27 assisted tackles in 1969. His career totals are 93 solos, 53 assists, and 14 tackles for a minus 86 yards. Exceptionally aggressive, he was an all-stater at McArthur high school. Born 7/15/49. Major, business.

Layne McDowell, DE, 6-4, 232, Sen., Cedar Rapids

McDowell has been a two-year starter at defensive tackle and was moved to end last spring. Named to the Big Ten's second team in 1969 after being credited with 35 solo and 31 assisted tackles. His two-year totals are 70 solo and 44 assisted tackles. A highly-sought prep at Jefferson high school, he is the brother of former Iowa football player Larry McDowell. Born 8/12/49. Major, business.



McDowell

Marcos Melendez, K, 6-2, 217, Sen., San Juan, P.R.

Melendez was plagued by injuries last season after an outstanding sophomore season as a kicker, setting Iowa records for conversion kicks in a game (8) and a season (40). He also led the Big Ten in kicking, scoring 34 points, and his 31 extra-point kicks set a league record. Born 10/4/48. Major, physical education.



Mickelson



Mitchell



Nelson

Geoff Mickelson, OG, 5-11, 228, Jun., Humboldt, Ia.

Mickelson became a regular in 1969 after the injury to Chuck Legler and developed into an outstanding interior lineman. Was the state prep heavy-weight wrestling champion in 1967 as well as being all-state in football. Born 4/22/50. Major, business.

Jim Miller, OT, 6-2, 218, Sen., Oxford, Iowa

Miller has been a part-time starter the past two years and is one of the top returning offensive linemen. One of the most determined and consistent players on squad, he was all-state in both football and basketball at Iowa City Regina high school. Born 7/24/49. Major, business.

Levi Mitchell, TB, 5-9, 180, Jun., Gary, Ind.

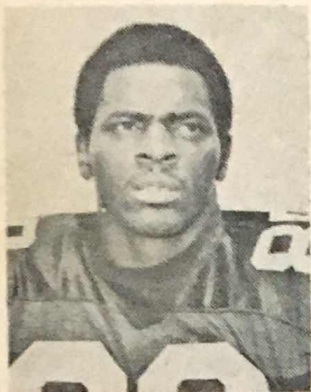
Mitchell is one of the Big Ten's flashiest runners and one of the finest in Iowa history. In 1969 he rushed for 404 yards and a 5.7 average, caught nine passes for 125 yards and returned nine kickoffs for 203 yards, including a 92-yard touchdown return against Washington State. He missed the last four games with a kidney injury. He gained honorable mention all-Big Ten. Led 1968 freshman team in rushing with 269 yards and a 7.9 average. An all-stater at Gary Froebel, he once scored 40 points in a game. Born 1/21/49. Major, physical education.

John Muller, OT, 6-4, 235, Jun., Algona, Iowa

Muller played behind Mel Morris last year, gaining valuable experience. One of the most improved players in spring drills, he could develop into one of the Big Ten's finest tackles. Started for Iowa's 1968 freshmen after being switched from fullback to tackle. Earned nine letters at Garrigan high school and gained all-state football honors. Born 6/14/50. Major, liberal arts.

Jerry Nelson, DE, 6-0, 224, Jun., Bessemer, Ala.

Nelson was the No. 1 middle guard in 1969, then switched to end in spring practice. He made 34 solo and 19 assisted tackles last fall and earned all-Big Ten mention. Set up Iowa's winning touchdown in the 1969 Indiana game by blocking a punt. Extremely quick and agile, he led Abrams high school to state titles in 1966 and 1967 and earned all-everything honors his senior year. Born 3/2/50. Major, liberal arts.



Osby

Don Osby, DB, 6-1, 186, Jun., Steubenville, Ohio

Osby started at split end last year, but has been switched to the defensive secondary. One of many Iowa football players from Steubenville, he caught 19 passes for 276 yards and one score. Caught 11 passes for 144 yards and one touchdown as a freshman. Was an all-state prep halfback for three years. Born 2/16/49. Major, business.



Penney

Steve Penney, FB, 6-2, 208, Jun., Geneseo, Ill.

Penney was set for defensive duty in 1969, but was moved to fullback due to Tim Sullivan's ankle injury. Led Iowa in rushing with 484 yards and a 4.7 average. Caught eight passes for 131 yards and one score. Starred in the defensive secondary for the 1968 freshman team. Named to the Big Ten's all-academic squad last fall. An outstanding high school back, he earned all-state and All-American honors. Born 10/3/50. Major, business.

Charles Podolak, DT, 6-4, 230, Sen., Atlantic, Iowa

Podolak was a deep reserve for two seasons, then switched to defensive tackle and was named the outstanding defensive lineman in spring drills. Brother of Iowa's former all-league tailback Ed Podolak, he has added weight and could have an outstanding year. A four-sport prep, he earned all-conference honors in his senior year. Born 12/18/48. Major, business.

Ken Price, LB, 6-2, 200, Sen., Houston, Tex.

Price missed the 1969 season due to the black boycott. A walk-on as a freshman, he was part-time starter at defensive end in 1968 and was credited with 28 solo and 19 assisted tackles. Missed much of spring practice due to a knee injury. Earned all-state honors at Kashmere Gardens high school. Born 4/7/50. Major, business.



Podolak

Jerry Reardon, WB, 6-2, 170, Soph., Kansas City, Mo.

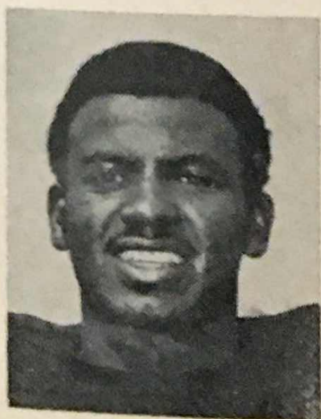
Starred in spring game by making three catches for 67 yards and one score. Started as a freshman and caught four passes for 45 yards. Brother of Iowa's Kerry, he earned six letters in football and track at Rockhurst high school. Once caught a 76-yard scoring pass from Kerry in a prep game. Born 7/20/51. Major, liberal arts.



K. Reardon



Schaefer



Solomon

Kerry Reardon, SE, 6-0, 178, Sen., Kansas City, Mo.

Reardon is one of the nation's finest receivers. Led Iowa in receiving in 1969 with 43 catches for 738 yards and a record-tying six touchdowns. Has caught 54 passes for 923 yards and nine touchdowns, rushed for 90 yards and a 4.5 average, punted 90 times for a 37.3 average, and returned 25 kickoffs for 640 yards and one score in his two-year career. He turned in the fifth longest touchdown run in Iowa history with a 95-yard kickoff return against Northwestern in 1968. Caught a career high of 10 passes for 144 yards and one touchdown against Oregon State in 1969. Finished fifth in receiving in the Big Ten last year with 26 catches for 400 yards and four scores. Earned all-league honorable mention the past two years. Tied for the Big Ten punting championship in 1968. Was named to the league's all-academic squad and third-team All-American in 1969. Born 5/6/49. Major, business.

Bill Rose, DE, 6-3, 230, Soph., Bayonne, N.J.

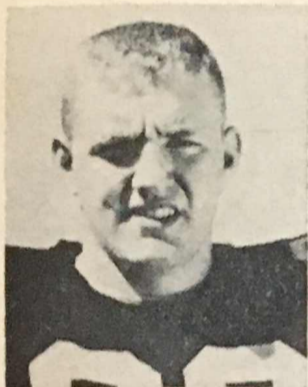
Rose had an impressive spring and will see a lot of action this year. Played both ways as a freshman, then switched permanently to defense. Outstanding prep player. Born 12/20/51. Major, business.

Alan Schaefer, QB, 6-0, 183, Jun., Pittsburgh, Pa.

A reserve defensive back last year, Schaefer has been moved back to quarterback, where he starred as a prep. Completed 14 of 32 passes as a freshman for 176 yards and one score. Played behind Roy Bash in spring drills. Could also see action at tailback. Earned all-state honors at Baldwin high school in 1966 and 1967. Born 8/12/50. Major, business.

Rich Solomon, DB, 5-6, 165, Jun., New Orleans, La.

Solomon is the littlest Hawkeye. A reserve safety and tailback in 1969, he intercepted two passes and rushed three times for 49 yards and one score. He starred in the spring game by intercepting two passes for 81 yards and one touchdown. An all-stater, he played with Iowa's Wendell Bell at New Orleans St. Augustine. Born 12/8/49. Major, liberal arts.



Sullivan

Tim Sullivan, FB, 6-2, 220, Sen., Shawnee, Kan.

Sullivan missed the 1969 season due to an ankle injury suffered in a motorcycle accident in May, 1969. Injured other ankle in spring drills and his future is uncertain. A regular in 1967 and 1968, he needs only 706 yards to break Iowa's career rushing record. Ranks 10th on all-time list with 1,005 yards. He gained 682 yards for eight scores and a 5.2 average in 1968. An outstanding blocker, he was an all-stater at St. Joseph's high school. Born 6/22/48. Major, physical education.



Triplett

Frank Sunderman, QB, 6-3, 203, Soph., Clarinda, Ia.

Sunderman developed into a fine quarterback at the end of spring drills. Guided freshman team last fall and completed 12 of 29 passes for 245 yards and one score. A strong individual, he earned 10 prep letters and was all-state in both football and basketball. Born 12/25/50. Major, business.



Windauer

Dave Triplett, SE, 6-0, 181, Jun., Des Moines, Iowa

Triplett played behind Kerry Reardon as a sophomore and will play at both split end and wingback in 1970. Exceptionally fast and quick, he guided Roosevelt high school to an undefeated season in 1967 and earned all-state honors. Born 2/14/50. Major, liberal arts.

Bill Windauer, DT, 6-4, 241, Jun., Chicago, Ill.

Windauer is one of the best linemen recruited by Iowa in recent years. Missed much of the early 1969 season with an ankle injury. Had 21 solo and 15 assisted tackles and was credited with five tackles for minus 19 yards. Extremely strong and quick for his size, he was a prep all-American at Mendel high school and won the national Catholic wrestling championship in 1967. Also wrestles for the Hawkeyes. Born 11/22/49. Major, liberal arts.

Future Iowa Schedules

**Indicates Home Games*

1971

Sept. 18—Oregon State
*Sept. 25—Penn State
*Oct. 2—Purdue
Oct. 9—Northwestern
*Oct. 16—Minnesota
Oct. 23—Indiana
*Oct. 30—Michigan State
Nov. 6—Wisconsin
*Nov. 13—Michigan
Nov. 20—Illinois

1972

*Sept. 23—Oregon State
Sept. 30—Penn State
Oct. 7—Purdue
*Oct. 14—Northwestern
Oct. 21—Minnesota
*Oct. 28—Indiana
Nov. 4—Michigan State
*Nov. 11—Wisconsin
Nov. 18—Michigan
*Nov. 25—Illinois

1973

Sept. 22—UCLA
Sept. 29—Penn State
*Oct. 6—Arizona
Oct. 13—Northwestern
*Oct. 20—Minnesota
*Oct. 27—Illinois
Nov. 3—Purdue
*Nov. 10—Wisconsin
Nov. 17—Ohio State
*Nov. 24—Michigan State

1974

*Sept. 21—UCLA
*Sept. 28—Penn State
Oct. 5—Southern Cal
*Oct. 12—Northwestern
Oct. 19—Minnesota
Oct. 26—Illinois
*Nov. 2—Purdue
Nov. 9—Wisconsin
*Nov. 16—Ohio State
Nov. 23—Michigan State

1975

Sept. 20—Syracuse
*Sept. 27—Penn State
*Oct. 4—Southern Cal
Oct. 11—Indiana
Oct. 18—Northwestern
*Oct. 25—Wisconsin
Nov. 1—Purdue
*Nov. 8—Minnesota
Nov. 15—Ohio State
*Nov. 22—Michigan State

1976

*Sept. 18—Syracuse
Sept. 25—Penn State
Oct. 2—Southern Cal
*Oct. 9—Indiana
*Oct. 16—Michigan
Oct. 23—Wisconsin
*Oct. 30—Purdue
Nov. 6—Minnesota
*Nov. 13—Ohio State
Nov. 20—Michigan State

1977

*Sept. 17—Iowa State
*Sept. 24—Arizona
Oct. 1—UCLA
Oct. 8—Indiana
*Oct. 15—Michigan
*Oct. 22—Wisconsin
Oct. 29—Illinois
*Nov. 5—Minnesota
Nov. 12—Northwestern
*Nov. 19—Michigan State

1978

*Sept. 23—Iowa State
Sept. 30—Arizona
*Oct. 7—Utah
*Oct. 14—Indiana
Oct. 21—Michigan
Oct. 28—Wisconsin
*Nov. 4—Illinois
Nov. 11—Minnesota
*Nov. 18—Northwestern
Nov. 25—Michigan State

Numerical Roster

10	*Mitchell, Levi	38	Jurca, Paul	66	Douglas, Jim
11	Skogman, Kyle	39	Hoinkes, Karl	67	Presson, Don
12	Harris, Dave	40	Farrell, John	68	Presson, Ron
13	Sunderman, Frank	41	**Hayes, Tom	69	Lynch, Lorin
14	Elgin, Jeff	42	McIntosh, Craig	70	Podolak, Charles
15	Crivello, Mike	43	*Clemons, Craig	71	*Legler, Chuck
16	Wyatt, Rich	44	**Green, Dennis	72	Darling, Craig
17	**Bash, Roy	45	*Solomon, Rich	73	*Muller, John
18	Schaefer, Alan	46	*Johnson, Jerry	74	*Nelson, Jerry
19	Schoonover, Bill	47	Triplett, Dave	75	Begale, Jim
20	**Cavole, Ray	48	Johnson, Steve	76	Bell, Wendell
21	Reardon, Jerry	49	Burrus, Bob	77	**Miller, Jim
22	**Reardon, Kerry	50	Malmer, Clark	78	**McDowell, Layne
23	Cross, Charles	51	**Cassady, Al	79	*Disser, Kelly
25	White, Ike	52	Young, Denny	80	Rose, Bill
26	Matthews, Al	53	**Clement, Dave	81	Watson, Todd
27	Holloway, Wayne	54	Davis, Rich	82	**Manning, Ray
28	*Melendez, Marcos	55	Werkau, Frank	83	**McDonald, Dan
29	*Penney, Steve	56	Edwards, Doug	84	Herington, Ken
30	Wendling, Mike	57	Link, Dave	85	*Price, Ken
31	Holmes, Frank	58	Whipka, Joe	86	Epps, Herschel
32	**Sullivan, Tim	59	Kaiser, Jim	87	Major, Tony
33	Sims, Bob	60	*Mickelson, Geoff	88	Dillner, Mike
34	Byard, Rich	61	Lutz, Rich	89	*Osby, Don
35	Simms, Dave	63	Glasgow, Marvin	90	Horton, Larry
36	Cabalka, Tom	64	Richardson, Glenn	91	Dean, Douglas
37	*Brooks, Dave	65	*Windauer, Bill	92	Wanat, Tom
					Jordon, Bill
					Ritchie, Joe

*Letters Won

Road Headquarters

Dates	Opponent	Motel	City	Telephone
Sept. 18-19	Oregon State	Sheraton Motor Inn	Portland	503/288-6111
Oct. 2-3	Arizona	Ramada Inn	Tucson	602/624-8341
Oct. 23-24	Michigan State	Holiday Inn South	Lansing	517/393-1650
Oct. 30-31	Minnesota	Midway Motor Inn	St. Paul	612/645-8681
Nov. 13-14	Michigan	Hilton Inn	Ann A'b'r	313/761-7800

Oregon State

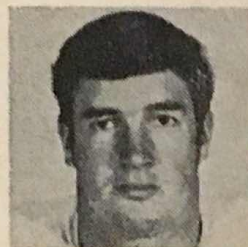
Sept. 19—At Corvallis, Ore.—8:00 p.m. PDT

Head Coach—Dee Andros, 5 years, won 32, lost 17, tied 2*Ath. Director*—Jim Barratt*Sports Info.*—John Eggers*Enrollment*—15,000*Nickname*—Beavers*Colors*—Orange and Black*1969 Record*—6-4*Returning Lettermen*—30*Lettermen Lost*—18*Conference*—Pacific 8*Series*—Iowa, 6-3

THE OUTLOOK—Oregon State is neither extremely young nor extremely experienced, but Dee Andros still figures the Beavers to be a mighty interesting team. The biggest job confronting Andros is rebuilding the defense, which lost the entire defensive secondary and All-American tackle Jess Lewis. Quarterback Steve Endicott and fullback Dave Schilling, both juniors, spearhead the offense along with running backs Larry Watson, Bill Carlquist, and Sal Cirrincione. OSU's passing game will be improved. Split end Jeff Kolberg is one of the best receivers in the West. Tackle Craig Hanneman is mainstay of the Beaver defense and one of the few seniors on the squad.

1970 Schedule

Sept. 12 UCLA
 Sept. 19 Iowa
 Sept. 26 at Oklahoma
 Oct. 3 at USC
 Oct. 10 Utah
 Oct. 17 at Houston
 Oct. 24 Washington
 Oct. 31 at Stanford
 Nov. 7 California
 Nov. 14 at Wash. State
 Nov. 21 Oregon

**Andros****Hanneman****1969 Results**

0	UCLA	37
42	Iowa	14
30	Arizona State	7
7	USC	31
10	Washington	6
3	Utah	7
0	Stanford	33
35	California	3
38	Washington St.	3
10	Oregon	7

Southern California

Sept. 26—At Iowa City, Iowa—1:30 p.m. CDT

Head Coach—John H. McKay, 10 years, won 76, lost 25, tied 4

Ath. Director—Jess Hill

Sports Info.—Don Andersen

Enrollment—20,000

Nickname—Trojans

Colors—Cardinal and Gold

1969 Record—10-0-1

Returning Lettermen—16

Lettermen Lost—13

Conference—Pacific 8

Series—2-2

THE OUTLOOK—Rose Bowl champion Southern California returns its entire starting offensive backfield and five members of the "Wild Bunch," which gave only 128 points last season. Returning backs are junior quarterback Jimmy Jones and seniors Bobby Chandler, Clarence Davis, and Charlie Evans. Davis, the Trojan tailback, rushed for 1,351 yards last season, sixth best in the country. The Trojan defense is anchored by tackle Tody Smith, end Charlie Weaver, linebacker Greg Slough, and backs Tyrone Hudson and Mike Haluchak. Coach John McKay's main concern is replacing 13 departed lettermen. The Trojans suffered heavy losses in the interior of both offensive and defensive lines, and the defensive secondary.

1970 Schedule

Sept. 12 at Alabama
 Sept. 19 Nebraska
 Sept. 26 at Iowa
 Oct. 3 Oregon State
 Oct. 10 at Stanford
 Oct. 17 Washington
 Oct. 24 at Oregon
 Oct. 31 California
 Nov. 7 at Wash. State
 Nov. 21 UCLA
 Nov. 28 Notre Dame



McKay



Chandler

1969 Results

31	Nebraska21
48	Northwestern	... 6
31	Oregon State	... 7
26	Stanford24
14	Notre Dame	... 14
29	Georgia Tech	... 18
14	California 9
28	Washington St.	... 7
16	Washington	... 7
14	UCLA12
	Rose Bowl	
10	Michigan 3

Arizona

Oct. 3—At Tucson, Ariz.—7:30 p.m. MST

Head Coach—Bob Weber, 1 year, won 3, lost 7, tied 0*Ath. Director*—M. R. "Dick"

Clausen

Sports Info.—Frank W. Soltys*Enrollment*—25,000*Nickname*—Wildcats*Colors*—Cardinal Red and Navy
Blue*1969 Record*—3-7-0*Returning Lettermen*—32*Lettermen Lost*—14*Conference*—Western Athletic*Series*—Iowa, 2-0

THE OUTLOOK—Second-year Coach Bob Weber has 32 lettermen returning, including seven offensive and seven defensive starters. The Wildcats' running game is solid with fullbacks Willie Lewis and Greg Boyd, and halfback Joe Petroshus. Junior quarterback Brian Linstrom developed into a fine passer in 1969, and will use sophomore Barry Dean as his top receiver. End Bill McKinley, linebacker Mark Arneson, tackle Jim Ventriglia, and safety Justin Lanne are the top defenders. Weber considers McKinley one of the finest defensive ends in the country. Arizona's chief weakness is the lack of depth, especially at linebacker and in the defensive secondary.

1970 Schedule

Sept. 19 at Michigan
 Sept. 26 San Jose
 Oct. 3 Iowa
 Oct. 10 Brigham Young
 Oct. 24 at Utah
 Oct. 31 Air Force
 Nov. 7 at New Mexico
 Nov. 14 at UTEP
 Nov. 21 Wyoming
 Dec. 5 Arizona State



Weber



McKinley

1969 Results

7	Wyoming	23
27	Kansas State	42
19	Iowa	31
17	Houston	34
26	UTEP	10
52	New Mexico	28
21	Brigham Young	31
0	Syracuse	23
17	Utah	16
24	Arizona State	38

Wisconsin

Oct. 10—At Iowa City, Iowa—1:30 p.m. CDT

Head Coach—John Jardine, 1st year

Ath. Director—Elroy Hirsch

Sports Info.—Jim Mott

Enrollment—35,000

Nickname—Badgers

Colors—Cardinal and White

1969 Record—3-7

Returning Lettermen—27

Lettermen Lost—18

Conference—Big Ten

Series—Wisconsin, 30-16-1

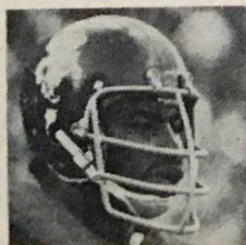
THE OUTLOOK—Rookie Coach John Jardine is working with the best Wisconsin squad in years. The Badgers have 27 lettermen, including four offensive and seven defensive starters. All-American candidate Alan "A-Train" Thompson is the top offensive returnee. The junior fullback rushed for 907 yards last fall. Junior quarterback Neil Graff is improved, and tackle Elbert Walker and guard Roger Jaeger form a solid nucleus around which to rebuild the offensive line. Wisconsin will use a 4-3 defensive set with seniors Bill Gregory and Jim DeLisle, and sophomore Keith Nosbusch the top linemen. Linebackers Chuck Winfrey and Gary Buss, and halfback Danny Crooks are other key defensive performers.

1970 Schedule

Sept. 19	at Oklahoma
Sept. 26	Texas Christian
Oct. 3	Penn State
Oct. 10	at Iowa
Oct. 17	Northwestern
Oct. 24	at Indiana
Oct. 31	Michigan
Nov. 7	Ohio State
Nov. 14	at Illinois
Nov. 21	Minnesota



Jardine



Thompson

1969 Results

21	Oklahoma	48
23	UCLA	34
7	Syracuse	43
23	Iowa	17
7	Northwestern	27
36	Indiana	34
7	Michigan	35
7	Ohio State	62
55	Illinois	14
10	Minnesota	35

Purdue

Oct. 17—At Iowa City, Iowa—1:30 p.m. CDT

Head Coach—Bob DeMoss, first season*Ath. Director*—G. J. "Red" Mackey*Sports Info.*—Ted Haracz*Enrollment*—26,000*Nickname*—Boilermakers*Colors*—Old Gold and Black*1969 Record*—8-2*Returning Lettermen*—36*Lettermen Lost*—20*Conference*—Big Ten*Series*—Purdue, 28-16-2

THE OUTLOOK—Rebuilding the defensive line and finding a replacement for quarterback Mike Phipps are the chief concerns of new Purdue coach Bob DeMoss. The Boilermakers lost four-fifths of their defensive front along with All-American cornerback Tim Foley. Nine starters return on offense including end Ashley Bell and running backs Randy Cooper, Stan Brown, and John Bullock. Senior Jeff Jones, who set an NCAA record with 44 successful extra point kicks last year, and sophomore Gary Danielson have the inside track on Phipps' old job. Top sophomores are defensive back Tim Racke, halfback Otis Armstrong, defensive end Gary Hrivnak, and split end Darryl Stingley.

1970 Schedule

Sept. 19	Texas Christian
Sept. 26	at Notre Dame
Oct. 3	at Stanford
Oct. 10	Michigan
Oct. 17	at Iowa
Oct. 24	at Northwestern
Oct. 31	Illinois
Nov. 7	at Michigan St.
Nov. 14	Ohio State
Nov. 21	Indiana



DeMoss



Bell

1969 Results

42	TCU	35
28	Notre Dame	14
36	Stanford	35
20	Michigan	31
35	Iowa	31
45	Northwestern	20
49	Illinois	22
41	Michigan St.	13
14	Ohio State	42
44	Indiana	21

Michigan State

Oct. 24—At East Lansing, Mich.—1:30 p.m. EST

Head Coach—Duffy Daugherty, 16 years, won 94, lost 53, tied 4

Ath. Director—Clarence "Biggie"
Munn

Sports Info.—Fred W. Stabley

Enrollment—40,820

Nickname—Spartans

Colors—Green and White

1969 Record—4-6-0

Returning Lettermen—32

Lettermen Lost—13

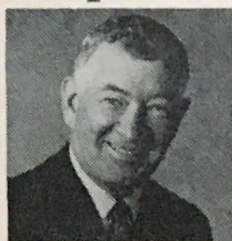
Conference—Big Ten

Series—Iowa, 4-3

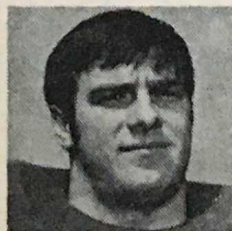
THE OUTLOOK—Improvement is in sight for Michigan State with the return of 32 lettermen and 10 starters. Biggest job facing Coach Duffy Daugherty is rebuilding the offensive line where only center Tom Beard returns. The main strength of the Spartans appears to be the defensive line where veterans Ron Curl, Bill Dawson, and Wilt Martin operate. The defensive secondary is strong with the experienced Clifton Hardy, Harold Phillips, Tom Kutschinski, and sophomore Brad Van Pelt forming the nucleus. Quarterbacking is inexperienced, but could improve behind sophomore George Mihaiu and JUCO transfer Mike Rasmussen. The running and passing game will be much better if Daugherty's offensive line problems are solved.

1970 Schedule

Sept. 19 at Washington
Sept. 26 Wash. State
Oct. 3 Notre Dame
Oct. 10 Ohio State
Oct. 17 at Michigan
Oct. 24 Iowa
Oct. 31 at Indiana
Nov. 7 Purdue
Nov. 14 at Minnesota
Nov. 21 Northwestern



Daugherty



Curl

1969 Results

27	Washington	11
23	SMU	15
28	Notre Dame	42
21	Ohio State	54
23	Michigan	12
18	Iowa	19
0	Indiana	16
13	Purdue	41
10	Minnesota	14
39	Northwestern	7

Minnesota

Oct. 31—At Minneapolis, Minn.—1:30 p.m. CDT

Head Coach—Murray Warmath, 16 years, won 80, lost 65, tied 6*Ath. Director*—Marsh Ryman*Sports Info.*—Otis Dypwick*Enrollment*—45,101*Nickname*—Golden Gophers*Colors*—Maroon and Gold*1969 Record*—4-5-1*Returning Lettermen*—35*Lettermen Lost*—19*Conference*—Big Ten*Series*—Minnesota, 42-20-1

THE OUTLOOK—The 1970 season should be exciting for the Golden Gophers and Coach Murray Warmath, who has 35 lettermen returning. Replacing quarterback Phil Hagen and defensive linemen Leon Trawick and Jim Pahula is Minnesota's major task. Junior Craig Curry will probably take over for Hagen with reserves filling the defensive line vacancies. The Gophers' running game will be solid with the return of hard-running Barry Mayer and Ernie Cook. The passing attack is questionable and depends a lot on Curry's progress. Except for the end slots, the Minnesota defense is solid with experienced players returning in the interior line, at linebacker, and in the secondary.

1970 Schedule

Sept. 19	at Missouri
Sept. 26	Ohio University
Oct. 3	Nebraska
Oct. 10	Indiana
Oct. 17	at Ohio State
Oct. 24	at Michigan
Oct. 31	Iowa
Nov. 7	at Northwestern
Nov. 14	Michigan State
Nov. 21	at Wisconsin



Warmath



Wright

1969 Results

26	Arizona State	48
35	Ohio U.	35
14	Nebraska	42
7	Indiana	17
7	Ohio State	34
9	Michigan	35
35	Iowa	8
28	Northwestern	21
14	Michigan St.	10
35	Wisconsin	10

Indiana

Nov. 7—At Iowa City, Iowa—1:30 p.m. CST

Head Coach—John Pont, 14 years, won 77, lost 55, tied 3*Ath. Director*—J. W. (Bill) Orwig*Sports Info.*—Tom Miller*Enrollment*—29,428*Nickname*—Fightin' Hoosiers*Colors*—Cream and Crimson*1969 Record*—4-6*Returning Lettermen*—26*Lettermen Lost*—28*Conference*—Big Ten*Series*—Iowa, 22-13-4

THE OUTLOOK—Despite the loss of three-year starters Harry Gonso, John Isenbarger, and Jade Butcher, Coach John Pont is not viewing the 1970 season with alarm. The Hoosier coach feels this year's team is more solid and will be disappointed if they are not in challenging position. Tailback Hank Pogue spearheads the running game. Four quarterbacks, including veterans Mike Heinzman and Greg Brown, are battling for the starting job. Biggest hope for improvement rests on a stronger defense, particularly in the secondary. Defensive end Ed Maguire is IU's prime candidate for All-American honors. The Hoosiers have speed and are bigger. Added depth at several positions should help.

1970 Schedule

Sept. 19 Colorado
 Sept. 26 at California
 Oct. 3 West Virginia
 Oct. 10 at Minnesota
 Oct. 17 at Illinois
 Oct. 24 Wisconsin
 Oct. 31 Michigan State
 Nov. 7 at Iowa
 Nov. 14 Northwestern
 Nov. 21 at Purdue

**Pont****Andrews****1969 Results**

58 Kentucky 30
 14 California 17
 7 Colorado 30
 17 Minnesota 7
 41 Illinois 20
 34 Wisconsin 36
 16 Michigan St. 0
 17 Iowa 28
 27 Northwestern ... 30
 21 Purdue 44

Michigan

Nov. 14—At Ann Arbor, Mich.—1:30 p.m. EST

Head Coach—Glenn E. (Bo) Schembechler, 1 year, won 8, lost 3*Ath. Director*—Don Canham*Sports Info.*—Will Perry*Enrollment*—32,003*Nickname*—Wolverines*Colors*—Maize and Blue*1969 Record*—8-3*Returning Lettermen*—33*Lettermen Lost*—25*Conference*—Big Ten*Series*—Michigan, 18-4-3

THE OUTLOOK—Always a thorn in Iowa's side, Michigan could be even better than last year's Big Ten co-champions. Second-year coach Bo Schembechler has 33 lettermen back, including six offensive and seven defensive starters, from the 1970 Rose Bowl squad. Biggest problem is to find replacements at tight end, fullback, offensive guard, and in the defensive backfield. Powerful running backs Bill Taylor and Glenn Doughty return along with quarterback Don Moorhead. Despite injuries, Taylor and Doughty formed one of the best tailback combinations in the country last year. The defense, anchored by linemen Fred Grambau, Pete Newell, and Henry Hill and linebackers Marty Huff and Mike Taylor, should be extremely strong.

1970 Schedule

Sept. 19 Arizona
 Sept. 26 at Washington
 Oct. 3 Texas A&M
 Oct. 10 at Purdue
 Oct. 17 Michigan State
 Oct. 24 Minnesota
 Oct. 31 at Wisconsin
 Nov. 7 Illinois
 Nov. 14 Iowa
 Nov. 21 at Ohio State

**Schembechler****Dierdorf****1969 Results**

42	Vanderbilt	14
45	Washington	7
17	Missouri	40
31	Purdue	20
12	Michigan St.	23
35	Minnesota	9
35	Wisconsin	7
57	Illinois	0
51	Iowa	6
24	Ohio State	12
	Rose Bowl	
3	Southern Cal	10

Illinois

Nov. 21—At Iowa City, Iowa—1:30 p.m. CST

Head Coach—Jim Valek, 3 years, won 5, lost 25

Ath. Director—Gene Vance

Sports Info.—Charles Bellatti

Enrollment—32,759

Nickname—Fighting Illini

Colors—Orange and Blue

1969 Record—0-10

Returning Lettermen—32

Lettermen Lost—16

Conference—Big Ten

Series—Illinois, 23-11-2

THE OUTLOOK—Coach Jim Valek is counting on 32 lettermen and numerous sophomores to get Illinois back on the road to respectability. Nine starters or part-time starters return on offense, including All-American tight end candidate Doug Dieken. Interior line depth, backfield speed, and deciding on a quarterback are Valek's offensive headaches. The defense could be improved if Valek can solve the problems at linebacker and in the secondary. Sophomores expected to help are quarterback Mike Wells, receivers Willie Osley, Tom Mullin, and John Bedalow, fullbacks Mike Navarro and Mason Minnes, and defenders Tab Bennett, Dave Wright, Duane Brantley, Jim Rucks, Al Keith, and Larry Allen.

1970 Schedule

Sept. 19 Oregon
 Sept. 26 Tulane
 Oct. 3 Syracuse
 Oct. 10 at Northwestern
 Oct. 17 Indiana
 Oct. 24 Ohio State
 Oct. 31 at Purdue
 Nov. 7 at Michigan
 Nov. 14 Wisconsin
 Nov. 21 at Iowa



Valek



Dieken

1969 Results

18 Washington St. . . 19
 6 Missouri 37
 20 Iowa State 48
 6 Northwestern . . . 10
 20 Indiana 41
 0 Ohio State 41
 22 Purdue 49
 0 Michigan 57
 14 Wisconsin 55
 0 Iowa 40

Hawkeye Roster

No.	Player	Pos.	Ht.	Wt.	Year	Hometown (high school)
17	**Bash, Roy	QB	6-2	200	Sen.	Belton, Mo.
75	Begale, Jim	DT	6-5	243	Soph.	Chicago, Ill. (St. Patrick)
76	Bell, Wendell	DT	6-5	272	Jun.	New Orleans, La. (St. Augustine)
37	*Brooks, Dave	LB	6-3	209	Sen.	Webster City, Iowa
49	Burrus, Bob	LB	6-3	210	Soph.	Joliet, Ill. (West)
34	Byard, Rich	LB	6-2	210	Soph.	Clinton, Iowa
36	Cabalka, Tom	LB	6-4	210	Soph.	Edina, Minn.
51	**Cassady, Al	C	6-2	228	Sen.	Springfield, Ill.
20	**Cavole, Ray	DB	5-11	185	Sen.	Kansas City, Mo. (Central)
53	**Clement, Dave	LB	6-0	198	Sen.	Newton, Iowa
43	*Clemons, Craig	DB	6-0	193	Jun.	Piqua, Ohio (Central)
15	Crivello, Mike	OE	6-2	202	Jun.	Alton, Ill.
23	Cross, Charles	DB	6-1	175	Soph.	Dubuque, Iowa (Wahlert)
72	Darling, Craig	OT	6-5	225	Soph.	Cedar Rapids, Iowa (Washington)
54	Davis, Rich	DT	6-3	260	Soph.	Springfield, Ill.
91	Dean, Douglas	OE	6-1	200	Jun.	Altoona, Pa.
88	Dillner, Mike	DE	6-2	225	Soph.	Edina, Minn.
79	*Disser, Kelly	OG	6-3	217	Jun.	Shawnee Mission, Kan. (Rockhurst)
66	Douglas, Jim	OG	6-3	215	Sen.	Omaha, Neb. (Benson)
56	Edwards, Doug	OT	6-2	255	Soph.	Waseca, Minn. (Central)
14	Elgin, Jeff	DB	6-1	188	Soph.	West Des Moines, Iowa (Valley)
86	Epps, Herschel	OE	6-4	200	Sen.	Chicago, Ill. (De LaSalle)
40	Farrell, John	FB	6-1	220	Soph.	Chicago, Ill. (Mendel)
63	Glasgow, Marvin	DT	6-6	235	Soph.	Sidney, Iowa
44	**Green, Dennis	WB	5-11	195	Sen.	Harrisburg, Pa.
12	Harris, Dave	TB	5-10	170	Soph.	Dayton, Ohio (Wright)
41	**Hayes, Tom	DB	6-0	175	Sen.	Atlantic, Iowa
84	Herington, Ken	OT	6-4	217	Jun.	Ottawa, Ill.
39	Hoinkes, Karl	LB	5-11	217	Soph.	McKeesport, Pa.
27	Holloway, Wayne	DB	5-11	170	Soph.	Chicago, Ill. (Harlan)
31	Holmes, Frank	FB	6-0	205	Jun.	Alton, Ill.
90	Horton, Larry	DE	6-6	245	Jun.	Gary, Ind. (Froebel)
46	*Johnson, Jerry	DB	6-1	179	Jun.	Bellaire, Ohio (St. John Central)
48	Johnson, Steve	DE	6-0	230	Jun.	Shreveport, La. (Union)
	Jordon, Bill	OE	6-2	185	Soph.	Chicago, Ill. (Harlan)
38	Jurca, Paul	LB	6-2	210	Soph.	Lemond, Ill. (Lockport West)
59	Kaiser, Jim	OT	6-2	223	Jun.	Park Ridge, Ill. (Maine)
71	*Legler, Chuck	OT	6-2	235	Jun.	Bettendorf, Iowa
57	Link, Dave	C	6-4	220	Sen.	Staunton, Ill.
61	Lutz, Rich	OG	6-1	227	Soph.	Carbondale, Ill.
69	Lynch, Lorin	OG	6-1	236	Jun.	Joliet, Ill. (West)
87	Major, Tony	WB	5-11	171	Jun.	Erie, Pa. (Iroquois)

50	Malmer, Clark	C	6-4	225	Jun.	Cedar Rapids, Iowa (Jefferson)
82	**Manning, Ray	OE	6-4	198	Sen.	Wichita Falls, Tex. (Washington)
26	Matthews, Al	DB	5-10	183	Soph.	Gary, Ind. (Tolleston)
83	**McDonald, Dan	LB	6-3	219	Sen.	Saginaw, Mich. (McArthur)
78	**McDowell, Layne	DT	6-4	232	Sen.	Cedar Rapids, Iowa (Jefferson)
42	McIntosh, Craig	OE	6-2	180	Soph.	Oelwein, Iowa
28	*Melendez, Marcos	K-OE	6-2	217	Sen.	San Juan, P.R. (Antilles)
60	*Mickelson, Geoff	OG	5-11	228	Jun.	Humboldt, Iowa
77	**Miller, Jim	OT	6-2	218	Sen.	Oxford, Iowa (Iowa City Regina)
10	*Mitchell, Levi	TB	5-9	180	Jun.	Gary, Ind. (Froebel)
73	*Muller, John	OT	6-4	233	Jun.	Algona, Iowa (Garrigan)
74	*Nelson, Jerry	DE	6-0	224	Jun.	Bessemer, Ala. (Abrams)
89	*Osby, Don	DB	6-1	186	Jun.	Steubenville, Ohio
29	*Penney, Steve	FB	6-2	208	Jun.	Geneseo, Ill.
70	Podolak, Charles	DT	6-4	230	Sen.	Atlantic, Iowa
67	Presson, Don	DT	6-6	250	Soph.	Bettendorf, Iowa
68	Presson, Ron	C	6-6	250	Soph.	Bettendorf, Iowa
85	*Price, Ken	LB	6-2	200	Sen.	Houston, Tex. (Kashmere Gardens)
21	Reardon, Jerry	WB	6-2	170	Soph.	Kansas City, Mo. (Rockhurst)
22	**Reardon, Kerry	OE	6-0	178	Sen.	Kansas City, Mo. (Rockhurst)
64	Richardson, Glenn	LB	6-2	220	Soph.	Urbandale, Iowa
	Ritchie, Joe	DE	6-3	250	Soph.	Des Moines, Iowa (Lincoln)
80	Rose, Bill	DE	6-3	230	Soph.	Bayonne, N.J.
18	Schaefer, Alan	QB	6-0	183	Jun.	Pittsburgh, Pa. (Baldwin)
19	Schoonover, Bill	DB	6-0	170	Soph.	Kansas City, Mo. (Rockhurst)
11	Skogman, Kyle	QB	6-1	185	Soph.	Cedar Rapids, Iowa (Washington)
35	Simms, Dave	LB	6-3	210	Soph.	Middleton, Wis.
33	Sims, Bob	LB	6-0	225	Soph.	Steubenville, Ohio
45	*Solomon, Rich	DB	5-6	165	Jun.	New Orleans, La. (St. Augustine)
32	**Sullivan, Tim	FB	6-2	220	Sen.	Shawnee Mission, Kan. (St. Joe's)
13	Sunderman, Frank	QB	6-3	203	Soph.	Clarinda, Iowa
47	Triplett, Dave	OE	6-0	181	Jun.	Des Moines, Iowa (Dowling)
92	Wanat, Tom	OG	6-2	221	Jun.	Chicago, Ill. (Weber)
81	Watson, Todd	OE	6-3	220	Jun.	Geneseo, Ill.
30	Wendling, Mike	DB	6-0	185	Soph.	Burlington, Iowa
55	Werkau, Frank	LB	6-1	211	Jun.	Springfield, Ill. (Lamphier)
25	White, Ike	LB	6-3	213	Soph.	Memphis, Tenn. (Hamilton)
65	*Windauer, Bill	DT	6-4	241	Jun.	Chicago, Ill. (Mendel)
58	Whipka, Joe	C	6-2	220	Sen.	Davenport, Iowa (West)
16	Wyatt, Rich	QB	5-11	180	Soph.	Chicago, Ill. (Mendel)
52	Young, Denny	C	6-3	225	Jun.	Chicago, Ill. (Brother Rice)

*Letters Won 83-man squad—27 lettermen, 20 seniors, 29 juniors, 34 sophomores

1969 Team Statistics

		Iowa	Opp.
First Downs	By Rushing	121	127
	By Passing	105	80
	By Penalty	12	10
	Total	238	217
Rushing	Times Carried	474	580
	Yards Gained	2,491	2,532
	Yards Lost	336	327
	Net Gain	2,155	2,205
	Touchdowns	20	22
Passing	Attempted	309	235
	Completed	142	117
	Net Gain	2,088	1,614
	Touchdowns	13	12
Total Offense	Plays	783	815
	Net Yards	4,243	3,819
Punting	Number	51	51
	Yards	1,849	2,012
	Average	36.3	39.4
Pass Interceptions	Number	13	20
	Yards Returned	89	234
	Touchdowns	0	1
Punt Returns	Number	26	23
	Yards Returned	255	349
	Touchdowns	0	1
Kickoff Returns	Number	50	46
	Yards Returned	949	918
	Touchdowns	1	1
Fumbles	Number	27	26
	Lost	18	19
Penalties	Number	43	52
	Yards	455	578
Scoring	Touchdowns	34	37
	By Rushing	20	22
	By Passing	13	12
	By Interception Ret.	0	1
	By Punt Return	0	1
	By Kickoff Return	1	1
	Field Goals	7/14	5/13
	Kick Conversions	24/30	30/32
	Two-Point Conversions	3/4	3/5
	Safeties	0	1
	Total Points	255	275
	<i>Score By Quarters</i>		
	Iowa	38 74 54	89 — 255
	Opponents	48 68 74	85 — 275



1969 Individual Statistics

**On 1970 Roster*

Rushing	Att	Yds	Loss	Net	Avg	TD	LG
*Penney	102	490	6	484	4.7	1	26
Lawrence	108	579	173	406	3.8	5	40
*Mitchell	71	452	48	404	5.7	4	60
*Green	89	437	41	396	4.4	5	70
Smith	66	347	4	343	5.2	1	82
*K. Reardon	19	101	15	86	4.5	0	19
*Solomon	3	49	0	49	16.3	1	30
*Manning	1	0	0	0	0.0	0	0
Cilek	15	36	49	-13	-0.9	3	17

Passing	Att	Comp	Pct	Yds	HI	TD	LG
Lawrence	239	113	47.3	1680	11	10	78
Cilek	69	29	42.0	408	9	3	35
*K. Reardon	1	0	.0	0	0	0	0

Scoring	TD	XP	FG	TP	K'off Ret	No	Yds	LG
Schuette	0	24/30	7/14	45	*K. Reardon	12	235	32
*Green	7			42	*Green	14	232	50
*K. Reardon	6			36	*Mitchell	9	203	92
*Mitchell	6			36	*Solomon	7	167	52
Lawrence	5			30	*Clemons	5	112	30
Cilek	3			18	*Lynch	2	0	0
*Manning	2	4		16	*Penney	1	0	0
*Penney	2			12				
*Osby	1			6	Int Ret	No	Yds	LG
*Solomon	1			6	Hamilton	3	34	33
Smith	1			6	*Solomon	2	6	6
Krull	0	2		2	*Clemons	2	0	0

Receiving	No	Yds	TD	LG	*Brooks	1	23	23
*K. Reardon	43	738	6	78	*Cavole	1	21	21
*Manning	28	361	2	29	Pedersen	1	5	5
*Osby	19	276	1	22	*McDonald	1	0	0
*Green	15	124	2	19	Ely	1	0	0
Krull	11	236	0	51	*Clement	1	0	0

*Mitchell	9	125	1	26	Tackle and Assist Leaders			
*Penney	8	131	1	34	*Brooks	59	43	
Smith	5	57	0	16	*Clemons	72	30	
*Bash	3	25	0	12	Ely	61	38	
Krol	1	15	0	15	*McDonald	62	27	

Punting	No	Avg	LK	*McDowell	35	31	
*K. Reardon	50	36.9	54	*Johnson	34	29	
Punt Ret	No	Yds	LG	Barnhart	42	22	
*Clemons	17	205	37	Hamilton	38	17	
*Solomon	7	30	23	*Nelson	34	19	
*Nelson	1	20	20	*Cavole	37	12	
Dunnigan	1	0	0				

1969 Game Summaries

Sept. 20—at Iowa City, Iowa

Iowa 0 0 0 14-14
 Oregon State . . 14 7 14 7-42
 OSU—Main, 1 run (Nehl kick)
 OSU—Watson, 4 pass from Endicott (Nehl kick)
 OSU—Rich, 65 punt return (Nehl kick)
 OSU—Watson, 5 pass from Endicott (Nehl kick)
 OSU—Main, 31 pass from Endicott (Nehl kick)
 Iowa—K. Reardon, 25 pass from Lawrence (Schuette kick)
 Iowa—Mitchell, 2 run (Schuette kick)
 OSU—Jurgenson, 83 pass interception (Nehl kick)
 Attendance—51,800

Sept. 27—at Iowa City, Iowa

Iowa 21 23 10 7-61
 Washington State 0 0 15 20-35
 Iowa—Mitchell, 92 kickoff return (Schuette kick)
 Iowa—Smith, 82 run (Schuette kick)
 Iowa—Lawrence, 1 run (Schuette kick)
 Iowa—Manning, 20 pass from Lawrence (Schuette kick)
 Iowa—Lawrence, 2 run (Schuette kick)
 Iowa—FG, Schuette 37
 Iowa—Cilek, 1 run (kick failed)
 WSU—Ewen, 12 pass from Wigmore (Monohan kick)
 Iowa—FG, Schuette 42
 WSU—Davis, 19 pass from Wigmore (Lyday pass from Wigmore)
 Iowa—Cilek, 5 run (Schuette kick)
 Iowa—Cilek, 1 run (Schuette kick)

WSU—Wigmore, 1 run (pass failed)
 WSU—Wigmore, 3 run (pass failed)
 WSU—Klien, 7 pass from Wigmore (Lyday pass from Wigmore)
 Attendance—43,231

Oct. 4—at Iowa City, Iowa

Iowa 0 14 7 10-31
 Arizona 10 9 0 0-19
 Ariz.—FG, Hurley 33
 Ariz.—Sherwood, 4 pass from Linstrom (Hurley kick)
 Ariz.—FG, Hurley 26
 Iowa—K. Reardon, 78 pass from Lawrence (Schuette kick)
 Ariz.—Arneson, 12 pass from Linstrom (kick failed)
 Iowa—Manning, 13 pass from Lawrence (Schuette kick)
 Iowa—Mitchell, 34 run (Schuette kick)
 Iowa—FG, Schuette 22
 Iowa—Green, 70 run (Schuette kick)
 Attendance—47,391

Oct. 11—at Madison, Wis.

Iowa 3 7 7 0-17
 Wisconsin 0 0 0 23-23
 Iowa—FG, Schuette 26
 Iowa—K. Reardon, 6 pass from Cilek (Schuette kick)
 Iowa—K. Reardon, 22 pass from Cilek (Schuette kick)
 Wis.—Thompson, 2 run (Jaeger kick)
 Wis.—Thompson, 6 run (Jaeger kick)
 Wis.—Marks, 17 pass from Graff (Jaeger kick)
 Wis.—Safety, Green fumbled ball in end zone
 Attendance—53,714

Oct. 18—at Lafayette, Ind.

Iowa 7 7 9 8-31
 Purdue 7 14 7 7-35
 Iowa-Mitchell, 46 run (Schuette kick)

Pur.—Brown, 88 kickoff return
 (Jones kick)

Pur.—Phipps, 18 run (Jones kick)

Iowa—Lawrence, 9 run (Schuette kick)

Pur.—Phipps, 1 run (Jones kick)

Pur.—Brown, 3 run (Jones kick)

Iowa—Mitchell, 9 run (kick failed)

Iowa—FG, Schuette 44

Iowa—Mitchell, 21 pass from Lawrence (Manning pass from Lawrence)

Pur.—Cooper, 8 run (Jones kick)

Attendance—65,961

Oct. 25—at Iowa City, Iowa

Iowa 0 9 0 10-19

Michigan State 3 0 7 8-18

MSU—FG, Sudar 29

Iowa—FG, Schuette 35

Iowa—Osby, 13 pass from Lawrence (kick blocked)

MSU—Smith, 2 run (Sudar kick)

Iowa—FG, Schuette 28

MSU—Kough, 63 pass from Triplett (Highsmith pass from Triplett)

Iowa—K. Reardon, 6 pass from Cilek (Schuette kick)

Attendance—56,471

Nov. 1—at Iowa City, Iowa

Iowa 0 0 0 8- 8

Minnesota 7 7 7 14-35

Minn.—Carter, 3 run (Nygren kick)

Minn.—Carter, 1 run (Nygren kick)

Minn.—Carter, 1 run (Nygren kick)

Minn.—Carter, 1 run (Nygren kick)

Iowa—Green, 5 run (Krull pass from Cilek)

Minn.—Cook, 2 pass from Curry (Nygren kick)

Attendance—56,413

Nov. 8—at Bloomington, Ind.

Iowa 0 7 14 7-28

Indiana 0 7 10 0-17

Iowa—Lawrence, 40 run (Schuette kick)

Indiana—Isenbarger, 4 run (Warner kick)

Iowa—K. Reardon, 19 pass from Lawrence (kick failed)

Indiana—Pogue, 6 run (Warner kick)

Iowa—Green, 5 run (Manning pass from Lawrence)

Indiana—FG, Warner 32

Iowa—Green, 4 run (Schuette kick)

Attendance—52,854

Nov. 15—at Iowa City, Iowa

Iowa 0 0 0 6- 6

Michigan 7 24 14 6-51

Mich.—Moorhead, 1 run (Titas kick)

Mich.—Taylor, 33 run (Titas kick)

Mich.—Taylor, 71 run (Titas kick)

Mich.—FG, Killian 27

Mich.—Mandich, 26 pass from Moorhead (Titas kick)

Mich.—Craw, 1 run (Titas kick)

Mich.—Betts, 6 run (Titas kick)

Mich.—Betts, 6 run (kick failed)

Iowa—Green, 14 pass from Lawrence (run failed)

Attendance—45,981

Nov. 22—at Champaign, Ill.

Iowa 7 7 7 19-40

Illinois 0 0 0 0- 0

Iowa—Green, 6 run (Sch' kick)

Iowa—Green, 4 pass from Lawrence (Schuette kick)

Iowa—Penney, 14 run (Sch' kick)

Iowa—Lawrence, 24 run (kick failed)

Iowa—Penney, 7 pass from Lawrence (Schuette kick)

Iowa—Solomon, 8 run (kick failed)

Attendance—30,257

1969 Game Statistics

Game	Score	First Downs	Yds. Rush.	Yds. Pass.	Passes	Passes Int. by	Punts	Fumbles Lost	Yds. Pen.
Iowa	14	28	183	275	20-38	1	6-33	4	25
Oregon State . .	42	17	94	224	17-33	5	9-40	1	10
Iowa	61	36	464	232	14-25	2	1-30	4	78
Wash. State . .	35	23	229	256	19-36	1	4-49	2	64
Iowa	31	22	225	236	14-26	1	5-36	3	30
Arizona	19	22	157	204	19-34	1	5-44	1	87
Iowa	17	19	165	144	8-24	2	4-42	1	70
Wisconsin . . .	23	28	236	159	14-29	3	3-27	1	75
Iowa	31	28	274	260	13-33	1	4-34	1	69
Purdue	35	23	152	177	15-28	4	5-43	5	74
Iowa	19	25	114	217	20-39	3	9-33	0	33
Michigan State	18	11	129	135	5-12	0	4-38	2	45
Iowa	8	16	102	138	10-42	0	6-36	2	32
Minnesota . . .	35	21	317	116	7-12	4	7-46	5	78
Iowa	28	16	171	168	13-20	2	5-37	1	30
Indiana	17	24	274	136	10-17	0	5-30	0	40
Iowa	6	19	123	152	14-33	0	8-37	1	15
Michigan	51	34	524	149	7-18	2	1-64	0	78
Iowa	40	29	334	266	16-29	1	3-47	1	73
Illinois	0	14	93	58	4-16	0	8-31	2	27

Hall of Fame Hawkeyes

Ten men who have been associated with Iowa football are members of the Hall of Fame, named by the National Football Foundation and/or the Helms Athletic Foundation.

Four men have been named to the Halls of both foundations: Howard Jones, coach; Nile Kinnick, player; Gordon Locke, player; Fred (Duke) Slater, player.

Six have been named to the Hall of the Helms Foundation: Dr. Edward Anderson, coach; Calvin Jones, player; Edward (Slip) Madigan, coach; Ossie Solem, coach; Emlen Tunnell, professional player; Eric Wilson, publicist.

All-Time Opponents

Opponent	First Game	W	L	T	Opponent	First Game	W	L	T
Air Force	1958	0	0	1	Michigan	1900	4	18	3
Arkansas	1925	1	0	0	Michigan State	1953	4	3	0
Arizona	1966	2	0	0	Minnesota	1891	20	42	1
Augustana	1894	2	0	0	Missouri	1892	5	7	0
Berg AAF	1945	1	0	0	Monmouth	1905	4	0	0
Boston U.	1948	1	0	0	Montana	1954	1	0	0
Bradley Tech	1930	5	0	0	Morningside	1908	4	0	0
Butler	1924	1	0	0	Nebraska	1891	11	21	3
California	1958	3	0	0	N.C. State	1965	0	1	0
Camp Dodge	1918	0	0	1	North Dakota	1926	1	0	0
Camp Grant	1942	1	0	0	N.D. State	1946	2	0	0
Carleton	1936	1	0	0	Northwestern	1897	19	12	3
Carroll	1926	2	0	0	Notre Dame	1921	8	13	3
Centenary	1930	0	1	0	Ohio State	1922	10	19	2
Chicago	1894	3	9	2	Oklahoma St.	1923	1	1	0
Coe	1892	9	0	0	Oregon	1949	1	0	0
Colgate	1935	1	1	0	Oregon State	1956	6	3	0
Colo. Teachers	1926	1	0	0	P & S	1897	0	1	0
Cornell	1891	13	1	0	Parsons	1895	1	0	0
Denver	1927	1	0	0	Penn Coll.	1895	2	0	0
Denver A.C.	1893	0	1	0	Penn State	1930	1	0	0
Des Moines	1905	1	0	0	Pittsburgh	1931	1	2	0
Des Moines Y	1896	1	0	0	Purdue	1910	16	28	2
Detroit	1930	1	0	0	Ripon	1928	1	0	0
Doane	1895	0	1	0	Rush	1898	1	1	0
Drake	1896	11	3	0	St. Louis	1905	2	1	0
Geo. Wash.	1931	1	1	0	Simpson	1898	4	0	0
Great Lakes	1917	0	4	0	South Dakota	1917	8	0	0
Grinnell	1889	11	5	1	S.E. Oklahoma	1924	1	0	0
Hawaii	1956	1	0	0	Southern Cal.	1925	2	2	0
Idaho	1964	1	0	0	Temple	1936	1	0	0
Illinois	1899	11	23	2	Texas A&M	1931	0	1	0
Indiana	1912	22	13	4	TCU	1958	2	1	0
Iowa Preflight	1943	0	2	0	UCLA	1938	0	4	0
Iowa State	1894	16	8	0	Upper Iowa	1898	2	0	0
Iowa Teachers	1898	10	1	0	Utah State	1957	1	0	0
Iowa Wesleyan	1890	1	0	0	Wabash	1925	2	0	0
Kansas	1891	4	6	0	Washington	1937	2	1	0
Kansas State	1951	3	0	0	Wash. State	1953	3	1	1
Knox	1892	6	0	1	Wash. (Mo.)	1902	4	0	0
Lawrence	1924	1	0	0	Wilton	1896	2	0	0
Luther	1893	1	0	0	Wisconsin	1894	16	30	1
Marquette	1930	1	1	0	Wyoming	1953	1	0	0
Miami, Fla.	1950	0	2	0	Yale	1922	1	0	0

Series Scores

**at Iowa City*

Oregon State (6-3-0)	1938 L 3-7	*1928 L 0-13	1915 L 13-19
*1956 W 14-13	*1939 W 32-29	1929 W 14-0	*1916 W 24-6
1957 W 35-19	1940 L 6-10	1932 L 0-34	1921 W 13-6
*1960 W 22-12	*1941 W 13-7	*1933 W 26-7	*1922 W 56-0
*1962 W 28-8	1942 W 14-13	1937 L 6-13	*1923 W 7-0
1965 W 27-7	*1943 T 7-7	*1938 L 13-31	1929 L 0-7
*1966 L 3-17	1944 L 0-32	1939 W 19-13	*1930 L 0-20
*1967 L 18-38	*1945 L 20-52	*1940 W 30-12	1931 L 0-22
*1968 W 21-20	1946 W 13-0	1941 L 0-23	*1932 L 0-18
*1969 L 14-42	*1947 W 27-14	*1942 W 6-0	1933 W 14-6
	1948 L 0-7	*1943 L 5-7	*1934 L 6-13
	*1949 W 35-9	1944 L 7-26	1935 L 6-12
	1950 L 7-20	*1945 L 7-27	*1936 L 0-13
Southern California (2-2-0)	1952 L 13-20	1946 W 21-7	1937 L 0-13
1925 L 0-18	*1953 W 19-13	1947 L 14-46	*1938 T 0-0
1950 W 20-14	1954 W 27-14	*1948 W 19-13	1939 W 4-0
1961 W 35-34	*1955 W 20-6	1949 L 13-35	*1940 L 6-21
*1962 L 0-7	1956 W 27-0	*1950 L 0-14	1941 L 6-7
	1957 W 47-7	1951 L 7-34	*1942 W 13-7
	*1958 W 34-13	*1952 L 13-42	1943 L 7-28
Michigan State (4-3-0)	*1961 W 27-8	1953 L 6-10	*1944 L 7-26
*1953 L 7-21	1962 W 14-10	*1954 W 13-7	1945 L 0-40
*1954 W 14-10	*1963 W 37-26	1955 L 14-37	*1946 W 16-0
*1959 W 37-8	1964 W 21-20	*1956 W 13-7	1947 L 0-21
1960 W 27-15	1965 L 17-21	*1957 W 21-7	*1948 L 13-20
*1965 L 0-35	*1966 W 20-19	1958 W 20-9	1949 W 21-7
1966 L 7-56	1967 L 17-21	1959 L 16-25	*1950 W 33-21
*1969 W 19-18	*1968 L 34-38	*1960 W 28-21	1951 L 30-34
	1969 W 28-17	*1961 W 47-15	1952 L 14-41
		1962 L 14-42	1953 W 26-0
		*1963 L 7-10	*1954 W 25-14
		1964 L 21-31	*1955 T 20-20
		1965 L 13-16	1956 W 21-20
		*1966 L 0-7	1959 L 7-14
		1967 T 21-21	*1960 W 21-14
		*1968 W 41-0	1961 L 0-9
		1969 L 17-23	*1962 L 3-26
			1963 L 0-14
			*1964 L 14-19
			*1965 L 14-17
			1966 L 0-35
Indiana (22-13-4)	Wisconsin (16-30-1)	Purdue (16-28-2)	
1912 W 13-6	1894 L 0-44	*1910 W 16-0	
*1913 W 60-0	1906 L 4-18	1911 W 11-0	
1920 W 17-7	*1907 L 5-6		
*1921 W 41-0	1911 L 0-12		
*1931 T 0-0	*1912 L 10-28		
1932 L 0-12	1917 L 0-20		
1934 T 0-0	1924 W 21-7		
*1935 T 6-6	*1925 L 0-6		
1936 L 6-13	1926 L 10-20		
*1937 L 0-3	1927 W 16-0		

*1967 L 22-41
1968 L 14-44
1969 L 31-35

**Minnesota
(20-42-1)**

*1891 L 4-42
1901 L 0-16
*1902 L 0-34
1903 L 0-75
*1904 L 0-11
1905 L 0-39
1909 L 0-41
*1911 L 6-24
1912 L 7-56
*1914 L 0-7
1915 L 13-51
1916 L 0-67
*1918 W 6-0
1919 W 9-6
*1920 W 28-7
1921 W 41-7
*1922 W 28-14
1923 L 7-20
*1924 W 13-0
1925 L 0-33
*1926 L 0-41
1927 L 0-38
*1928 W 7-6
*1929 W 9-7
1931 L 0-34
*1932 L 6-21
1933 L 7-19
*1934 L 12-48
*1935 L 6-13

1936 L 0-52
*1937 L 10-35
1938 L 0-28
*1939 W 13-9
1940 L 6-34
*1941 L 13-34
1942 L 7-27
1943 L 14-33
*1944 L 0-46
*1945 W 20-19
1946 L 6-16
*1947 W 13-7
*1948 L 21-28
1949 L 7-55
1950 W 13-0
*1951 T 20-20
1952 L 7-17
*1953 W 27-0
1954 L 20-22
*1955 W 26-0
1956 W 7-0
*1957 W 44-20
1958 W 28-6
*1959 W 33-0
1960 L 10-27
*1961 L 9-16
1962 L 0-10
*1963 W 27-13
1964 L 13-14
*1965 L 3-14
1966 L 0-17
*1967 L 0-10
1968 W 35-28
*1969 L 8-35

**Illinois
(11-23-2)**

1899 W 58-0
*1901 L 0-27
1902 L 0-80
*1903 W 12-0
1904 L 0-29
*1907 W 25-12
1908 L 0-22
*1918 L 0-19
1919 L 7-9
1920 L 3-20
*1921 W 14-2
1922 W 8-7
*1923 L 6-9
1924 L 0-36
*1925 W 12-10
1926 L 6-13
*1927 L 0-14
*1929 T 7-7
1935 W 19-0
*1936 T 0-0
*1940 W 18-7
1941 W 21-0
*1942 L 7-12
*1943 L 10-19
1944 L 6-40
1945 L 7-48
*1946 L 0-7
*1947 L 12-35
1948 L 0-14
*1949 L 14-20
*1950 L 7-21
1951 L 13-40
*1952 L 13-33

*1967 L 19-21
1968 W 37-13
1969 W 40-0

**Arizona
(2-0-0)**

*1966 W 31-20
*1969 W 31-19

**Michigan
(4-18-3)**

1900 W 28-5
1901 L 0-50
1902 L 0-107
*1923 L 3-9
1924 W 9-2
1928 L 7-10
1929 T 0-0
1933 L 6-10
*1937 L 6-7
1939 L 7-27
1941 L 0-6
1942 L 14-28
1946 L 7-14
*1951 L 0-21
1953 L 13-14
1954 L 13-14
1955 L 21-33
*1956 L 14-17
1957 T 21-21
1958 W 37-14
1961 L 14-23
*1962 W 28-14
1963 T 21-21
*1964 L 20-34
*1969 L 6-51

Iowa in the Top Ten

Since the wire services began running polls 30 years ago, Iowa has ranked among the nation's top ten a half-dozen times. Additionally, the Hawkeyes were named national champions by the Football Writers Association in 1958. Here is the way Iowa has been ranked by the Associated Press and United Press International:

1939—No. 9 by both wire services.
1953—No. 9 by both wire services.
1956—No. 3 by both wire services.

1957—No. 5 by UPI, No. 6 by AP.
1958—No. 2 by both wire services.
1960—No. 2 by UPI, No. 3 by AP.

Largest Home Crowds

(58,000 or more)

Year	Att.	Opponent	Score
1961	60,150	Wisconsin	W 47-15
1961	60,100	Minnesota	L 9-16
1962	60,100	Purdue	L 3-26
1965	59,800	Purdue	L 14-17
1963	59,700	Wisconsin	L 7-10
1964	59,600	Purdue	L 14-19
1963	59,300	Minnesota	W 27-13
1959	59,300	Michigan State	W 37-8
1958	59,275	Northwestern	W 26-20
1960	59,200	Purdue	W 21-14
1965	59,200	Minnesota	L 3-14
1964	58,700	Ohio State	L 19-21
1958	58,643	Ohio State	L 28-38
1963	58,600	Indiana	W 37-26
1958	58,230	Notre Dame	W 31-21
1957	58,147	Wisconsin	W 21-7
1956	58,137	Michigan	L 14-17
1968	58,043	Notre Dame	L 28-51
1961	58,000	Notre Dame	W 42-21

Attendance Past 20 Years

Year	Home	Road	Total	Top Home Crowd	Top Road Crowd
1950	196,921	259,352	456,473	52,863 N. Dame	82,174 Ohio St.
1951	157,883	234,680	392,563	53,050 Mich.	67,557 Ohio St.
1952	181,164	168,303	349,467	46,600 N. Dame	60,813 Minn.
1953	211,109	195,461	406,570	53,355 Minn.	56,428 N.D.
1954	245,421	246,237	491,658	52,900 Purdue	82,141 Ohio St.
1955	201,072	343,953	545,025	52,459 Minn.	82,701 Ohio St.
1956	306,478	227,772	534,550	58,137 Mich.	97,126 Rose Bl.
1957	203,709	297,147	500,856	58,147 Wis.	90,478 Mich.
1958	329,673	300,589	630,262	59,275 N'ern	98,297 Rose Bl.
1959	279,400	239,494	518,894	59,400 MSU	82,126 Ohio St.
1960	264,100	242,268	506,368	59,200 Purdue	74,493 MSU
1961	290,250	226,000	516,250	60,150 Wis.	83,795 Ohio St.
1962	281,080	197,808	478,888	60,100 Purdue	65,087 Minn.
1963	230,200	232,896	463,096	59,700 Wis.	83,163 Ohio St.
1964	266,394	217,303	483,697	59,600 Purdue	65,713 Wis.
1965	263,700	249,498	513,198	59,800 Purdue	84,116 Ohio St.
1966	278,628	220,060	498,688	54,613 N'ern	68,711 MSU
1967	241,993	264,557	506,550	56,504 Purdue	72,567 Ohio St.
1968	294,126	179,689	473,815	58,043 N. Dame	61,927 Purdue
1969	301,287	203,796	505,083	56,471 MSU	65,971 Purdue

Largest Road Crowds

(75,000 or more)

Year	Att.	Site	Opponent	Score
1959	98,297	Pasadena	California	W 38-12
1957	97,126	Pasadena	Oregon State	W 35-19
1947	90,910	Los Angeles	UCLA	L 7-22
1957	90,478	Ann Arbor	Michigan	T 21-21
1965	84,116	Columbus	Ohio State	L 0-38
1961	83,795	Columbus	Ohio State	L 13-29
1963	83,163	Columbus	Ohio State	L 3-7
1957	82,935	Columbus	Ohio State	L 13-17
1955	82,701	Columbus	Ohio State	L 10-20
1950	82,174	Columbus	Ohio State	L 21-83
1954	82,141	Columbus	Ohio State	L 14-20
1959	82,126	Columbus	Ohio State	W 16-7
1955	75,692	Los Angeles	UCLA	L 13-33

Most Valuable Hawkeyes

1924—Leland Parkin, QB	1947—Harold Shoener, E
1925—Donald Graham, FB	1948—Al DiMarco, QB
1926—Nick Kutsch, HB	1949—Jack Dittmer, E
1927—Emerson Nelson, T	1950—Harold Bradley, T
1928—Willis Glassgow, HB	*1951—William Reichardt, FB
*1929—Willis Glassgow, HB	1952—William Fenton, E
1930—Oliver Sansen, FB	1953—William Fenton, E
1931—Oliver Sansen, FB	1954—Warren Lawson, C
1932—Joe Laws, HB	1955—Jerry Reichow, QB
*1933—Joe Laws, HB	*1956—Kenneth Ploen, QB
1934—Dick Crayne, FB	1957—Robert Commings, G
1935—Dick Crayne, FB	*1958—Randy Duncan, QB
1936—Homer Harris, E	1959—Don Norton, E
1937—Bob Lannon, E	1960—Bernie Wyatt, HB
1938—Erwin Prasse, E	1961—Al Hinton, T
*1939—Nile Kinnick, HB	1962—Larry Ferguson, HB
1940—Mike Enich, T	1963—Mike Reilly, G
1941—William Diehl, C	1964—Karl Noonan, FL
1942—Tom Farmer, QB	1965—Dave Long, DE
1943—Bob Liddy, G	1966—Dick Gibbs, DB
1944—Bob Snyder, C	1967—Silas McKinnie, TB
1945—Arthur Johnson, FB	1968—Ed Podolak, TB
1946—William Kay, T	1969—Larry Ely, LB

*Won Chicago Tribune silver football trophy awarded annually to most valuable player in the Big Ten.

Past Captains



Prasse



Diehl



Broeder



Ferguson



Podolak

1889—Martin Sampson, HB

1890—Arthur Smith, QB

1891—Frank Pierce, QB

1892—Allen Sanford, HB

1893—Lloyd Elliott, FB

1894—Prince Sawyer, QB

1895—Kalita Leighton, G

1896—Iver Iverson, C

1897—J. Walker, G

1898—Samuel Hobbs, FB

1899—Moray Eby, T

1900—John Griffith, FB

1901—S. Clyde Williams, QB

1902—H. S. Hollenbeck, G

1903—C. H. Coulthard, E

1904—Nyle Jones, HB

1905—A. E. McGowan, FB

1906—George Allen, HB

1907—R. A. White, E

1908—Charles Kirk, FB

1909—H. R. Gross, T

1910—M. W. Hyland, E

1911—J. R. Murphy, FB-HB

1912—Henry Hanson, G

1913—Ralph McGinnis, FB

1914—A. H. Gunderson, E

1915—Irving Barron, T

1916—Charles Laun, FB

1917—J. E. Davis, HB

1918—Ronald Reed, E

1919—Fred Lohman, FB

1920—William Kelly, QB

1921—Aubrey Devine, HB

1922—Gordon Locke, FB

1923—Glenn Miller, HB

1924—Leland Parkin, QB

1925—Harold Griffen, C

1926—Paul Smith, E

1927—Emerson Nelson, T

1928—Richard Brown, C

1929—Willis Glassgow, HB

1930—Grover Higdon, G

1931—Oliver Sansen, FB

1932—Marcus Magnusen, C

1933—Tom Moore, C

1934—Russell Fisher, HB

1935—Richard Crayne, FB

1936—John Hild, HB

Ted Osmaloski, C

1937—Homer Harris, E

1938—Jack Eicherly, HB

1939—Erwin Prasse, E

1940—Mike Enich, T

1941—William Diehl, C

1942—None

1943—Robert Liddy, G

William Barbour, E

1944-51—None

1952—William Fenton, E

1953—Andrew Houg, T

1954—George Broeder, FB

1955—Calvin Jones, G

1956—Richard Deasy, T

Donald Suchy, C

1957—Jim Gibbons, E

1958—John Nocera, FB

1959—Don Norton, E

Ray Jauch, HB

1960—Jerry Mauren, HB

1961—Bill Van Buren, C

Wilburn Hollis, QB

1962—Larry Ferguson, HB

1963—Paul Krause, HB

Wally Hilgenberg, G

1964—Tony Giacobazzi, E

1965—Karl Noonan, FL

1966—None

1967—Tony Williams, DHB

Silas McKinnie, TB

1968—Ed Podolak, TB

Steve Wilson, DB

1969—Jon Meskimen, OG

Larry Ely, DLB

All-Big Ten First Team

1900—Clyde Williams, quarterback
Joe Warner, tackle

1912—James Trickey, tackle

1913—Ralph McGinnis, fullback

1916—Fred Becker, tackle

1918—Harry Hunzelman, guard
Ronald Reed, end

1919—Fred Slater, tackle
Fred Lohman, fullback
Lester Belding, end
Aubrey Devine, quarterback

1920—Fred Slater, tackle
Aubrey Devine, quarterback
Lester Belding, end

1921—Fred Slater, tackle
Aubrey Devine, quarterback
Gordon Locke, fullback
Lester Belding, end
John Heldt, center
Chester Mead, guard
Max Kadesky, end

1922—Gordon Locke, fullback
Paul Minick, guard
George Thompson, tackle

1923—Lowell Otte, end

1924—Lowell Otte, end
John Hancock, tackle
Leland Parkin, quarterback
William Fleckenstein, guard

1925—Richard Romey, end

1926—Emerson Nelson, tackle

1927—Emerson Nelson, tackle

1928—Peter Westra, tackle
Richard Brown, center
Fred Roberts, guard
Willis Glassgow, halfback

1929—Fred Roberts, guard
Willis Glassgow, halfback

1933—Joe Laws, quarterback
Francis Schammel, guard

1934—Ozzie Simmons, halfback

1935—Ozzie Simmons, halfback

1937—Robert Lannon, end

1938—Erwin Prasse, end

1939—Erwin Prasse, end
Nile Kinnick, halfback
Mike Enich, tackle

1940—Mike Enich, tackle

1942—Tom Farmer, quarterback

1946—Earl Banks, guard
Dick Hoerner, fullback

1948—William Kay, tackle

1950—William Reichardt, fullback

1951—William Reichardt, fullback

1952—Bill Fenton, end

1953—Calvin Jones, guard
Jerry Hilgenberg, center

1954—Calvin Jones, guard

1955—Calvin Jones, guard
Eddie Vincent, halfback

1956—Alex Karras, tackle
Kenneth Ploen, quarterback
Donald Suchy, center
Frank Gilliam, end

1957—Alex Karras, tackle
Jim Gibbons, end
Frank Bloomquist, guard
Randy Duncan, quarterback

1958—Randy Duncan, quarterback
Willie Fleming, halfback

1959—Don Norton, end
Bill Lapham, center
Bob Jeter, halfback

1960—Mark Manders, guard
Larry Ferguson, halfback
Wilburn Hollis, quarterback

1962—Larry Ferguson, halfback

1963—Mike Reilly, guard
Wally Hilgenberg, guard

1964—Gary Snook, quarterback
Karl Noonan, end

1965—John Niland, guard

1968—Ed Podolak, tailback
Jon Meskimen, guard

1969—Jon Meskimen, guard

All-America First Team

- 1916—Fred Becker (tackle) Eckersall
1919—Lester Belding (end) Menke
1921—Fred (Duke) Slater (tackle) Reed (Athletic World), Eckersall
Aubrey Devine (quarterback) Camp, Football World (207 Coaches),
Eckersall
Gordon Locke (quarterback) Reed (Athletic World)
1922—Gordon Locke (quarterback) Camp, Eckersall, Reed (Athletic World)
1925—Dick Romey (end) Liberty Magazine
1926—Emerson Nelson (tackle) New York Sun
1928—Peter Westra (tackle) Farrell, NEA
1929—Willis Glassgow (halfback) Grantland Rice, NEA, Football Annual,
New York Sun, Consolidated Press
1933—Francis Schammel (guard) AP, UP, NANA
1935—Ozzie Simmons (halfback) Sporting News
1939—Nile Kinnick (halfback) Collier's, AP, UP, INS, New York Sun,
NEA, All-American Board, Hearst, Central Press, N.Y. Daily News,
Sporting News
1940—Mike Enich (tackle) New York News, Sporting News
1953—Jerry Hilgenberg (center) Look (Football Writers Assn.)
Calvin Jones (guard) NBC-TV
1954—Calvin Jones (guard) Look, ABC-TV, Sporting News, All-American
Board, Jet, UP, NEA, Central Press, CBS-Radio, New York News,
Metropolitan Sunday Newspapers, All-Players, Pitts Smith Football
News, Gridiron Record, Williamson Rating
1955—Calvin Jones (guard) UP, Sporting News, Look, New York News,
Williamson Rating, Jet, All-American Board
1956—Alex Karras (tackle) AP, Hearst, Look, NBC-TV, Central Press
Kenneth Ploen (quarterback) NBC-TV, ABC, Frank Leahy
1957—Alex Karras (tackle) AP, UP, INS, Look, Hearst, Sporting News,
NEA, NBC-TV and All-Players, Central Press
Jim Gibbons (end) UP, Hearst, Sporting News, Today, TV, Look,
New York Daily News
1958—Randy Duncan (quarterback) AP, UPI, NEA, Sporting News, Look,
Football Coaches, New York Daily News, Helms Athletic Foun-
dation
Curt Merz (end) Look, NBC-TV
1959—Don Norton (end) Look, NBC-TV
1960—Larry Ferguson (halfback) Look
Mark Manders (guard) Look, New York News, Sporting News
1961—Bill Van Buren (center) Sporting News
1963—Mike Reilly (guard) Look
1964—Karl Noonan (flanker) NEA, Football Digest
1965—John Niland (off. guard) Sporting News, Time
Dave Long (def. end) New York News

All-America Second Team

- 1912—James Trickey (tackle) Camp
1916—Fred Becker (tackle)
1919—Fred (Duke) Slater (tackle) Camp, Eckersall
1920—Les Belding (end) Eckersall
1921—Gordon Locke (halfback) Eckersall
 Fred (Duke) Slater (tackle) Camp, Football World
1922—Max Kadesky (end) Camp
1924—John Hancock (tackle) Billy Evans
1925—Richard Romey (end) Rice
1926—Emerson Nelson (tackle) Evans, AP
1928—Willis Glassgow (halfback) Central Press, NANA
 Peter Westra (guard) N.Y. Sun, NANA
1929—Willis Glassgow (halfback) UP
1933—Joe Laws (quarterback) Collier's, NANA
 Francis Schammel (guard) Hearst
1934—Ozzie Simmons (halfback) INS, NANA
1935—Ozzie Simmons (halfback) NEA, NANA, AP
1939—Erwin Prasse (end) UP
1940—Mike Enich (tackle) UP, Bill Stern
1948—William Kay (tackle) AP
1951—William Reichardt (fullback) Players
1953—Jerry Hilgenberg (center) AP
1954—Calvin Jones (guard) AP
1955—Calvin Jones (guard) NEA, AP
1956—Alex Karras (tackle) UP, NEA
 Kenneth Ploen (quarterback) AP
 Frank Gilliam (end) NEA
 Don Suchy (center) Central Press, INS
1957—Jim Gibbons (end) Central Press
1959—Don Norton (end) Sporting News, NEA
1960—Mark Manders (guard) AP, Football Coaches, ABC-TV
 Wilburn Hollis (quarterback) ABC-TV
1963—Mike Reilly (linebacker) AP
1964—John Niland (guard) NEA
 Karl Noonan (end) AP
1965—John Niland (guard) AP

Hawkeyes in Post-Season Games

East-West Game

at San Francisco

1926—Wesley Fry, FB
1930—Willis Glassgow, HB
1931—Harold Ely, T
1934—Joe Laws, HB
Francis Schammel, G
1936—Dick Crayne, HB
1941—Mike Enich, T
Ray Murphy, FB
1942—Al Couppee, QB
1943—Bill Burkett, E
1944—William Baughman, C
1948—Harold Shoener, E
Bob Smith, HB
1949—Dick Woodard, C
1953—Don Chelf, T
Jerry Hilgenberg, C
1954—George Broeder, FB
John Hall, T
1955—Jerry Reichow, QB
Calvin Jones, G
1957—Jim Gibbons, E
Alex Karras, T
1959—Bob Jeter, HB
Ray Jauch, HB
Don Norton, E
1960—Mark Manders, G
1961—Bill Van Buren, C
1962—Larry Ferguson, HB
Earl McQuiston, G
1963—Mike Reilly, G
Paul Krause, HB
1965—Karl Noonan, FL
John Niland, G
1968—Ed Podolak, TB
1969—Larry Ely, LB

1957—Frank Gilliam, E
1958—Alex Karras, T
Jim Gibbons, E
1960—Ray Jauch, HB
1961—Mark Manders, G
Charles Lee, T
1962—Bill Van Buren, C
1963—Larry Ferguson, HB
Earl McQuiston, G
1964—Mike Reilly, G
Wally Hilgenberg, G
1965—Tony Giacobazzi, E
1966—Karl Noonan, FL
John Niland, OG
1967—Silas McKinnie, TB
1968—Ed Podolak, TB
1969—Larry Ely, LB

North-South Game

at Miami, Fla.

1948—Bill Kay, T
1953—Bill Fenton, E
George Rice, HB
1954—Warren Lawson, C
Lou Matykiewicz, E
1955—Jim Freeman, E
1957—Frank Bloomquist, G
Bob Commings, G
Frank Rigney, T
1959—Don Horn, FB
Curt Merz, E
Bill Lapham, C
1960—Lloyd Humphreys, C
1961—Bill Whisler, E
1962—Bill Perkins, FB
1963—Cloyd Webb, E
Gary Fletcher, C
Wally Hilgenberg, G
1964—Tony Giacobazzi, E
Phillip Deutsch, T
1969—Jon Meskimen, G

Hula Bowl

at Honolulu

1955—George Broeder, FB
1956—Calvin Jones, G

Senior Bowl *at Mobile, Ala.*

- 1952—Bill Reichardt, FB
1954—Jerry Hilgenberg, C
Don Chelf, T
1956—Jerry Reichow, QB
Jim Freeman, E
1958—Jim Gibbons, E
Alex Karras, T
Frank Rigney, T
1960—Bill Lapham, C
Don Norton, E
Olen Treadway, QB
Curt Merz, E
1964—Paul Krause, E

Blue-Gray Game *at Montgomery, Ala.*

- 1947—Lou King, QB
1949—Bob McKenzie, E
Don Winslow, T
1951—Bill Reichardt, FB
1955—Rodger Swedberg, T
Roger Wiegmann, FB
1959—John Sawin, T
1960—Jerry Mauren, HB
1961—Sherwyn Thorson, G
Bernie Wyatt, HB
1963—Lonnie Rogers, HB
Gus Kasapis, T
1965—Dave Long, DE
1968—Al Bream, OE
Barry Crees, WB
1969—Mike Cilek, QB
Melvin Morris, T

Coaches All-Star Game *at Buffalo, N.Y.*

- 1961—Mark Manders, G

- 1962—Al Hinton, T
Sherwyn Thorson, G
1963—Larry Ferguson, HB
1964—Wally Hilgenberg, G
Gary Fletcher, C

Tribune All-Star Game *at Chicago, Ill.*

- 1934—Joe Laws, HB
1936—Dick Crayne, FB
1939—Frank Balazs, FB
1940—Nile Kinnick, HB
Floyd Dean, HB
Dick Evans, E
1941—Ken Pettit, E
1942—Bill Diehl, C
Jim Walker, T
1943—Tom Hand, C
Jim Youell, QB
Bob Penaluna, G
1945—Stan Mohrbacher, T
1947—Bruno Niedziela, T
1949—Bill Kay, T
Al DiMarco, QB
1950—Don Winslow, G
1952—Bill Reichardt, FB
1954—Jerry Hilgenberg, C
Bill Fenton, E
1956—Jerry Reichow, QB
Edward Vincent, HB
1958—Jim Gibbons, E
Alex Karras, T
1959—Charles Lewis, T
1960—Bill Lapham, C
1963—Larry Ferguson, HB
1964—Wally Hilgenberg, G
Mike Reilly, G
Paul Krause, HB
1969—Ed Podolak, HB

Note—Jerry Reichow was named most valuable player in 1956 East-West Game. Paul Krause was named most valuable North lineman in 1964 Senior Bowl Game. Randy Duncan, QB, was selected for 1959 Hula Bowl but did not play because of injury.

Historical Highlights

- 1889—Played first intercollegiate football game.
- 1899—First undefeated season (8-0-1) was recorded under Coach Alden Knipe. Admitted to the Western Conference (Big Ten) Dec. 1.
- 1900—A share of the conference championship highlighted another unbeaten season.
- 1901—Loss to Minnesota ended string of 23 games without defeat.
- 1921—First unbeaten and untied team (7-0) was coached by Howard Jones and won clear Big Ten title.
- 1922—Another perfect season (7-0) included share of conference crown with Michigan.
- 1923—Loss to Illinois ended string of 20 straight victories.
- 1929—Suspended from Big Ten for one year.
- 1939—Dr. Eddie Anderson coached the Iron Men, led by halfback Nile Kinnick, recipient of the Heisman Trophy, the Maxwell Award, and the Walter Camp Trophy.
- 1952—Forest Evashevski named head coach.
- 1955—Guard Cal Jones received the Outland Award.
- 1956—Won the Big Ten and appeared in Rose Bowl for the first time. Finished 9-1 in all games and beat Oregon State at Pasadena.
- 1957—Tackle Alex Karras received the Outland Award.
- 1958—Big Ten champions again and made California a victim in the Rose Bowl. Honors included No. 1 ranking by the Football Writers and Grantland Rice trophy by Look Magazine. Led the nation in total offense. Quarterback Randy Duncan was named the Helms Foundation Player of the Year and received the Walter Camp Trophy.
- 1960—Shared the Big Ten title with Minnesota. Evashevski quit coaching to devote full time to the athletic directorship after the completion of 8-1 season.
- 1961—Shutout by Purdue ended string of 78 games in which one or more touchdowns were scored.
- 1963—Notre Dame game was canceled following the death of President Kennedy.
- 1964—Some 28 Iowa and Big Ten records were broken despite 3-6 season.
- 1965—Ray Nagel named head coach in December.
- 1968—The 4-3 Big Ten finish was best since 1960 season. Record-breaking year produced new Big Ten scoring and total-offense marks.
- 1969—Black boycott disrupted spring practice. Postseason turmoil included firing and rehiring of Coach Ray Nagel in late May, 1970.

Television Appearances

After an absence of three seasons, the Hawkeyes made a television comeback in 1969. The Michigan State game in Iowa City and the Indiana game at Bloomington were part of the NCAA package on ABC-TV.

Televised games bring the best out of the Hawkeyes. In 23 appearances Iowa has won 18, lost only four, and tied one. During one stretch—from 1955 to 1959—the Hawkeyes went 10 games without defeat. In national appearances the record is 9-2-1, in regional appearances 9-2.

Date	Site*	Score
Oct. 24, 1953	Iowa City (N)	Iowa 19, Indiana 13
Sept. 25, 1954	Iowa City (N)	Iowa 14, Michigan State 10
Oct. 29, 1955	Ann Arbor (N)	Michigan 33, Iowa 21
Nov. 5, 1955	Iowa City (R)	Iowa 26, Minnesota 0
Sept. 29, 1956	Bloomington (R)	Iowa 27, Indiana 0
Nov. 10, 1956	Minneapolis (N)	Iowa 7, Minnesota 0
Jan. 1, 1957	Rose Bowl (N)	Iowa 35, Oregon State 19
Nov. 2, 1957	Ann Arbor (N)	Iowa 21, Michigan 21
Nov. 23, 1957	South Bend (R)	Iowa 21, Notre Dame 13
Oct. 18, 1958	Madison (R)	Iowa 20, Wisconsin 9
Nov. 22, 1958	Iowa City (N)	Iowa 31, Notre Dame 21
Jan. 1, 1959	Rose Bowl (N)	Iowa 38, California 12
Oct. 10, 1959	Iowa City (R)	Iowa 37, Michigan State 8
Oct. 24, 1959	Lafayette (N)	Purdue 14, Iowa 7
Oct. 15, 1960	Iowa City (R)	Iowa 28, Wisconsin 21
Nov. 12, 1960	Iowa City (N)	Iowa 35, Ohio State 12
Oct. 7, 1961	Los Angeles (N)	Iowa 35, Southern Cal. 34
Nov. 11, 1961	Iowa City (R)	Minnesota 16, Iowa 9
Oct. 3, 1964	Iowa City (R)	Iowa 28, Washington 18
Sept. 25, 1965	Portland (N)	Iowa 27, Oregon State 7
Nov. 6, 1965	Iowa City (R)	Michigan State 35, Iowa 0
Oct. 25, 1969	Iowa City (R)	Iowa 19, Michigan State 18
Nov. 8, 1969	Bloomington (R)	Iowa 28, Indiana 17

*N—national, R—regional

The University

The University of Iowa was founded in 1847 by the state's first general assembly. First classes were held in 1855. Since then the University has graduated nearly 110,000 men and women. Current enrollment is about 20,000.

The first law school west of the Mississippi was established at Iowa in 1868. Today about half the degrees awarded by the University are from its professional colleges, or advanced degrees. Willard L. Boyd is the school's 15th president.

Best Performances

This list of best performances recently compiled by the Iowa Sports Information Office starts with the 1939 season, commonly called the "Modern Era" of Big Ten and National Collegiate athletics.

Touchdowns of 75 Yards or More

Player	Yds.	Type of Play	Opponent	Year
1. George (Dusty) Rice	100	K.O. Return	Purdue	1951
Joe Williams	100	K.O. Return	Notre Dame	1961
3. Bill Reichardt	99	K.O. Return	Oregon	1949
4. Eddie Vincent	96	Run	Purdue	1954
5. Kerry Reardon	95	K.O. Return	Northwestern	1968
6. Robert Longley	94	Punt Return	Oregon	1949
Bobby Stearns	94	Int. Return	Montana	1954
8. Henry Vollenweider	92	K.O. Return	South Dakota	1939
Levi Mitchell	92	K.O. Return	Wash. State	1969
10. Larry Ferguson	91	Run	Ohio State	1960
11. Dick Hoerner	88	K.O. Return	Michigan	1942
12. Gary Snook to Craig Nourse	87	Pass	Minnesota	1964
Ed Podolak	87	Run	Northwestern	1966
14. Larry Ferguson	85	Run	Oregon St.	1960
Dick Gibbs	85	Int. Return	Indiana	1965
16. Dayton Perry	84	Fumble Return	Purdue	1960
17. Paul Krause	82	Punt Return	Michigan	1962
Tom Smith	82	Run	Wash. State	1969
19. Bob Jeter#	81	Run	California	1958
20. Randy Duncan to Geno Sessi	80	Pass	Utah State	1957
Gerald Mauren	80	Punt Return	Notre Dame	1959
M. Szykowny to L. Ferguson	80	Pass	Wisconsin	1962
23. James Hatch	78	Run	Illinois	1952
L. Lawrence to K. Reardon	78	Pass	Arizona	1969
25. Bill Burkett	77	K.O. Return	Nebraska	1940
Tom Farmer to Bus Mertes to Al Couppee	77	Pass & Lateral	Minnesota	1941
27. Earl Smith	76	Punt Return	Ohio State	1954
Don Dobrino to Earl Smith	76	Pass	Notre Dame	1954
Fred Riddle to Paul Krause	76	Pass	Indiana	1963

#Rose Bowl Game

Yards Passing, Game

Player	Yds.	Att.	Comp.	TD	Opponent	Year
1. Mike Cilek	316	48	27	2	Illinois	1967
2. Gary Snook	310	49	26	2	Purdue	1964
3. Gary Snook	309	36	18	2	Minnesota	1964
4. Olen Treadway	304	41	26	1	Wisconsin	1959
5. Ed Podolak	295	44	21	1	Oregon State	1967

Pass Completions, Game

Player	Comp.	Att.	Yds.	TD	Opponent	Year
1. Mike Cilek	27	48	316	2	Illinois	1967
2. Olen Treadway	26	41	304	1	Wisconsin	1959
Gary Snook	26	49	310	2	Purdue	1964
4. Randy Duncan	22	33	249	1	Ohio State	1958
5. Ed Podolak	21	44	295	1	Oregon State	1967
Ed Podolak	21	31	202	2	Purdue	1967

Touchdown Passes, Game

Player	TD	Comp.	Att.	Yds.	Opponent	Year
1. Fred Riddle	5	10	16	155	Indiana	1963
2. Nile Kinnick	3	4	13	108	Indiana	1939
Nile Kinnick	3	7	14	126	Wisconsin	1939
Tom Farmer	3	7	19	210	Nebraska	1942
Burt Britzmann	3	12	25	203	Pittsburgh	1951
Randy Duncan	3	14	18	174	Northwestern	1958
Gary Snook	3	9	21	164	Minnesota	1963
Mike Cilek	3	7	10	143	Northwestern	1968

Yards Rushing, Game

Player	Yds.	Att.	TD	Opponent	Year
1. Ed Podolak	286	17	2	Northwestern	1968
2. Bob Jeter#	194	9	1	California	1959
3. Jerry Faske	183	20	1	Northwestern	1949
4. Dennis Green	175	18	2	TCU	1968
5. Bill Reichardt	166	31	2	Minnesota	1951
6. Eddie Vincent	154	13	1	Minnesota	1954
7. Larry Ferguson	153	20	1	Michigan	1962
8. Bill Reichardt	152	25	0	Michigan	1951
9. Silas McKinnie	150	25	0	Indiana	1967
10. Eddie Vincent	142	15	2	Purdue	1954
#Rose Bowl					

Scoring, Game

Player	TD	XP	Pts.	Opponent	Year
1. Larry Lawrence	4	0	24	Minnesota	1968
2. Nile Kinnick	3	5	23	South Dakota	1939
3. Bill Green	3	0	18	Wisconsin	1940
Nelson Smith	3	0	18	Nebraska	1944
Emlen Tunnell	3	0	18	Indiana	1947
George Rice	3	0	18	Purdue	1951
George Rice	3	0	18	Wyoming	1953
George Rice	3	0	18	Minnesota	1953
Geno Sessi	3	0	18	Utah State	1957
Joe Williams	3	0	18	Southern Cal	1961
Dalton Kimble	3	0	18	Idaho	1964
Tim Sullivan	3	0	18	Northwestern	1968
Levi Mitchell	3	0	18	Purdue	1969
Mike Cilek	3	0	18	Wash. State	1969

Yards Receiving, Game

Player	Yds.	No.	TD	Opponent	Year
1. Jim Gibbons	164	9	2	Minnesota	1957
2. Al Bream	160	12	2	Illinois	1967
3. Emlen Tunnell	155	6	3	Indiana	1947
Karl Noonan	155	10	1	Wisconsin	1964
5. Jack Dittmer	151	5	2	Boston U.	1948

Pass Receptions, Game

Player	No.	Yds.	TD	Opponent	Year
1. Al Bream	12	160	2	Illinois	1967
2. Karl Noonan	11	146	1	Washington	1964
3. Karl Noonan	10	155	1	Wisconsin	1964
Karl Noonan	10	127	0	Purdue	1964
Al Bream	10	106	1	Purdue	1967
Al Bream	10	91	2	Northwestern	1967
Kerry Reardon	10	144	1	Oregon State	1969

Total Offense, Game

Player	Yards Rush	Yards Pass	Total Yards	Opponent	Year
1. Larry Lawrence	77	260	337	Purdue	1969
2. Ed Podolak	35	295	330	Oregon State	1967
3. Mike Cilek	7	316	323	Illinois	1967
4. Ed Podolak	286	34	320	Northwestern	1968
5. Olen Treadway	-9	304	295	Wisconsin	1959

Total Offense, Season

Player	Year	Yards Pass	Yards Rush	Total Yards	TDR
1. Larry Lawrence	1969	1,680	406	2,086	15
2. Gary Snook	1964	2,062	-18	2,044	15
3. Ed Podolak	1966	1,041	450	1,491	6
4. Larry Lawrence	1968	1,307	161	1,468	17
5. Randy Duncan	1958	1,347	59	1,406	15
6. Ed Podolak	1967	1,014	323	1,337	8
7. Ed Podolak	1968	261	937	1,198	9
8. Randy Duncan	1957	1,124	59	1,183	15
9. Jerry Reichow	1955	722	369	1,091	7
10. Al DiMarco	1948	1,105	-48	1,057	6
11. Nile Kinnick	1939	662	374	1,036	16

Scoring, Season

Player	Year	TD	XP	Pts.	Player	Year	TD	XP	Pts.
1. Wilburn Hollis	1960	11	2	68	6. George Rice	1951	9	0	54
2. Earl Smith	1954	11	0	66	Willie Fleming	1958	9	0	54
3. George Rice	1953	10	0	60	Joe Williams	1961	9	0	54
Larry Lawrence	1968	10	0	60	Ed Podolak	1968	9	0	54
5. Silas McKinnie	1967	9	2	56	10. Dalton Kimble	1964	8	0	48
					Tim Sullivan	1968	8	0	48

Yards Rushing, Season

Player	Year	Att.	Gain	Loss	Net	Avg.	TD
1. Ed Podolak	1968	154	1,005	68	937	6.1	8
2. Bill Reichardt	1951	178	773	36	737	4.2	2
3. Tim Sullivan	1968	131	686	4	682	5.2	7
4. Larry Ferguson	1960	90	680	15	665	7.3	6
5. Eddie Vincent	1954	95	634	16	618	6.5	5
6. Bob Jeter	1959	108	619	10	609	5.5	4
7. Silas McKinnie	1967	166	636	48	588	3.5	9
8. Bill Reichardt	1950	138	620	35	585	4.2	0
9. Larry Ferguson	1962	113	570	23	547	4.8	2
10. Silas McKinnie	1966	124	549	33	516	4.2	1

Yards Passing, Season

Player	Year	Att.	Comp.	Pct.	Yards	TD	Int.
1. Gary Snook	1964	311	151	.485	2,062	11	14
2. Larry Lawrence	1969	239	113	.473	1,680	10	11
3. Randy Duncan	1958	172	101	.587	1,347	11	9
4. Larry Lawrence	1968	156	88	.564	1,307	7	9
5. Randy Duncan	1957	119	70	.588	1,124	10	12
6. Matt Szykowny	1961	120	79	.561	1,078	7	15
7. Olen Treadway	1959	147	86	.585	1,014	6	3
8. Ed Podolak	1967	162	79	.489	1,014	5	9
9. Gary Snook	1965	230	95	.413	1,009	4	23
10. Burt Britzmann	1951	150	69	.460	942	11	10

Yards Receiving, Season

Player	Year	Yds.	No.	Player	Year	Yds.	No.
1. Karl Noonan	1964	933	59	4. Jim Gibbons	1957	587	36
2. Kerry Reardon	1969	738	43	5. Karl Noonan	1965	545	43
3. Al Bream	1967	704	55	6. Barry Crees	1967	520	32

Pass Receptions, Season

Player	Year	No.	Yds.	Player	Year	No.	Yds.
1. Karl Noonan	1964	59	933	4. Karl Noonan	1965	43	545
2. Al Bream	1967	55	704	5. Jim Gibbons	1957	36	587
3. Kerry Reardon	1969	43	738	6. Ray Manning	1968	35	426

Touchdown Receptions, Season

Player	Year	TD	Player	Year	TD
1. Jack Dittmer	1949	6	5. Bill Burkett	1942	5
George Rice	1951	6	Jack Dittmer	1948	5
Paul Krause	1963	6	Bob McKenzie	1949	5
Kerry Reardon	1969	6	Al Bream	1967	5
			Ray Manning	1968	5

Yards Rushing, Career

Player	Years	Soph.	Jun.	Sen.	Total
1. Ed Podolak	66-67-68	450	323	937	1,710
2. Bill Reichardt	49-50-51	343	585	737	1,665
3. Silas McKinnie	65-66-67	286	516	588	1,390
4. Eddie Vincent	53-54-55	374	618	381	1,373
5. Larry Ferguson*	59-60-61-62	50	665	547	1,297
6. Jerry Faske	48-49-50	288	482	470	1,240
7. Bill Green	39-40-41	232	483	420	1,135
8. George Rice	51-52-53	441	218	391	1,050
9. George Broeder*	51-52-53-54	311	410	254	1,026
10. Bob Jeter	57-58-59	51	356	609	1,016
11. Tim Sullivan	67-68	323	682		1,005

*Varsity careers cover four seasons

Scoring, Career

Player	Years	TD	XP	FG	Pts.
1. George Rice	51-52-53	21	0	0	126
2. Wilburn Hollis	59-60-61	16	4	0	100
3. Earl Smith	53-54-55	16	0	0	96
4. Ed Podolak	66-67-68	15	2	0	92
5. Bill Reichardt	49-50-51	6	51/63	1	90
Bob Prescott	56-57-58	4	60/73	2	90
Larry Lawrence	68-69	15	0	0	90
8. Joe Williams	60-61	14	0	0	84
9. Bill Green	39-40-41	13	0	0	78
Jack Dittmer	46-47-48-49	13	0	0	78
Dennis Green	68-69	13	0	0	78
12. Bob Anderson	65-66-67	0	32/32	15/23	77

Total Offense, Career

Player	Years	Yards Rushing	Yards Passing	Total Yards
1. Ed Podolak	66-67-68	1,710	2,316	4,026
2. Gary Snook	63-64-65	79	3,738	3,817
3. Larry Lawrence	68-69	567	2,987	3,554
4. Randy Duncan	56-57-58	104	2,615	2,719
5. Jerry Reichow	53-54-55	850	1,327	2,177
6. Matt Szykowny	60-61-62	-197	2,038	1,841

Passing, Career

Player	Years	Att.	Comp.	Pct.	Yds.	TD
1. Gary Snook	63-64-65	631	280	.443	3,738	20
2. Larry Lawrence	68-69	395	201	.509	2,987	17
3. Randy Duncan	56-57-58	328	186	.564	2,615	23
4. Ed Podolak	66-67-68	398	172	.432	2,316	8
5. Matt Szykowny	60-61-62	290	155	.534	2,038	14
6. Al DiMarco	47-48	261	113	.432	1,749	14

(Glenn Drahn threw 17 touchdown passes in 1948-49-50)

Yards Receiving, Career

Player	Years	No.	Yds.	TD
1. Al Bream	66-67-68	114	1,642	7
2. Karl Noonan	63-64-65	102	1,478	4
3. Barry Crees	66-67-68	66	1,069	2
4. Cloyd Webb	61-62-63	61	1,029	10
5. Jim Gibbons	55-56-57	64	1,028	10
6. Jack Dittmer	46-47-48-49	54	980	13
7. Don Norton	58-59-60	62	941	10
8. Kerry Reardon	68-69	54	923	9
9. Ray Manning	68-69	63	787	7
10. Paul Krause	61-62-63	42	718	7
11. Rich O'Hara	64-65	53	699	5

Yards Rushing, Game

Year	Opponent	Att.	Gain	Loss	Net	TD
1. 1969	Washington State	65	498	34	464	6
2. 1968	Northwestern	49	446	15	431	6
3. 1958	*California	55	445	16	429	5
4. 1956	Notre Dame	45	432	23	409	6
5. 1953	Washington State	51	418	22	396	7
6. 1940	South Dakota	82	412	44	368	6
1954	Purdue	66	383	15	368	3

*1959 Rose Bowl

Yards Passing, Game

Year	Opponent	Att.	Comp.	Pct.	Yards	TD	Int.
1. 1957	Utah State	22	10	.455	328	4	2
2. 1967	Illinois	49	27	.551	316	2	1
3. 1964	Purdue	50	26	.520	310	2	2
4. 1964	Minnesota	36	18	.500	309	2	2
5. 1959	Wisconsin	41	26	.634	304	1	0

Total Offense, Game

Year	Opponent	Yards Rush	Yards Pass	Total Yards	TD
1. 1969	Washington State	464	232	696	8
2. 1957	Utah State	320	328	648	10
3. 1968	Northwestern	431	208	639	10
4. 1959	Kansas State	365	250	615	7
5. 1947	North Dakota State	294	266	560	9
6. 1953	Washington State	396	142	538	8

Passing, Season

Completions				Yards		Touchdowns	
Year	Comp.	Att.	Pct.	Year	Yards	Year	TD
1. 1964	154	321	.480	1. 1964	2,125	1. 1949	13
2. 1969	142	302	.470	2. 1969	2,088	1968	13
3. 1967	140	298	.470	3. 1968	1,876	1969	13
4. 1968	123	229	.541	4. 1967	1,748	4. 1963	12
5. 1958	115	205	.561	5. 1958	1,530		
1965	115	288	.399	6. 1961	1,319		

Total Offense, Season

Year	Yards Rush	Yards Pass	Total Yards	TD
1. 1968	2,528	1,976	4,404	46
2. 1958	2,125	1,530	3,655	34
3. 1957	2,170	1,303	3,473	38
4. 1959	2,151	1,248	3,399	32
5. 1967	1,294	1,748	3,042	22

Yards Rushing, Season

Year	Att.	Gain	Loss	Net	TD
1. 1968	530	2,861	333	2,528	32
2. 1960	439	2,463	179	2,284	27
3. 1957	453	2,376	206	2,170	27
4. 1969	474	2,491	336	2,155	20
5. 1959	440	2,261	110	2,151	24
6. 1953	456	2,295	148	2,147	21

Iowa's All-Time Team

The selection of Nile Kinnick as the greatest player ever to perform for the Hawkeyes highlights the naming of Iowa's all-time football team. Fans selected the team as part of the Big Ten's 75th anniversary celebration in 1970. Calvin Jones received more votes than any other player, but in a separate ballot Kinnick got the greatest player nod over Jones by a sizable margin. Kinnick received the Heisman, Maxwell, and Walter Camp trophies in 1939. Jones won the Outland Trophy in 1955.

First Team	Pos.	Second Team
Jim Gibbons, 1957 (717)	End . . .	Erwin Prasse, 1939 (252)
Frank Gilliam, 1956 (258)	End . . .	Don Norton, 1959 (243)
Calvin Jones, 1955 (978)	Lineman	Mike Enich, 1940 (399)
Alex Karras, 1957 (921)	Lineman	Mike Reilly, 1963 (237)
Duke Slater, 1921 (828)	Lineman	Francis Schammel, 1933 (192)
Jerry Hilgenberg, 1953 (558) . . .	Lineman	Don Suchy, 1956 (114)
John Niland, 1964 (414)	Lineman	Mark Manders, 1960 (57)
Nile Kinnick, 1939 (954)	Back . . .	Ozzie Simmons, 1936 (279)
Kenny Ploen, 1956 (450)	Back . . .	Randy Duncan, 1958 (258)
Aubrey Devine, 1921 (393)	Back . . .	Bob Jeter, 1959 (231)
Gordon Locke, 1922 (390)	Back . . .	Ed Podolak, 1968 (219)

Players who also received 100 or more votes:

Ends—Lester Belding, 1921 (198); Karl Noonan, 1965 (123); Curt Merz, 1959 (123)

Backs—Bill Reichardt, 1951 (207); Larry Ferguson, 1960 (195); Willis Glassgow, 1929 (147); Willie Fleming, 1958 (138)

Team Records

Points

Game—70 vs Utah State, 1957

Season—322 in 1968

Touchdowns

Game—10 vs Utah State, 1957;

Northwestern, 1968

Season—46 in 1968

Extra Points

Game—8 vs Utah State, 1957;

Northwestern, 1968

Season—40 in 1968

Rushing Yards

Game—464 vs Wash. State, 1969

Season—2,528 in 1968

Times Carried from Scrimmage

Game—82 vs South Dakota, 1940;

Minnesota, 1968

Season—530 in 1968

Pass Attempts

Game—50 vs Purdue, 1964

Season—321 in 1964

Pass Completions

Game—27 vs Illinois, 1967

Season—154 in 1964

Passing Yards

Game—328 vs Utah State, 1957

Season—2,125 in 1964

Touchdown Passes

Game—5 vs Indiana, 1963

Season—13 in 1949, 1968, and 1969

Total Offense

Game—696 vs Wash. State, 1969

Season—4,404 in 1968

Plays from Scrimmage

Game—101 vs Minnesota, 1968

Season—789 in 1969

Individual Records

Points

Game—24 by Larry Lawrence vs Minnesota, 1968

Season—68 by Wilburn Hollis, 1960

Career—126 by George (Dusty) Rice, 1951-52-53

Touchdowns

Game—4 by Larry Lawrence vs Minnesota, 1968

Season—11 by Earl Smith, 1954; Wilburn Hollis, 1960

Career—21 by George (Dusty) Rice, 1951-52-53

Field Goals

Game—2 by Bob Anderson vs Oregon State, 1965, Wisconsin, 1965, and Indiana, 1966; Alan Schuette vs Washington State, 1969, Michigan State, 1969

Season—7 by Alan Schuette, 1969

Career—15 by Bob Anderson, 1965-66-67

Points After Touchdown (kick)

Game—8 by Marcos Melendez vs Northwestern, 1968

Season—40 by Marcos Melendez, 1968

Career—59 by Bob Prescott, 1956-57-58

PAT Attempts (kick)

Game—9 by Marcos Melendez vs Northwestern, 1968

Season—44 by Marcos Melendez, 1968

Career—74 by Bob Prescott, 1956-57-58

Yards Rushing

Game—286 by Ed Podolak vs Northwestern, 1968

Season—937 by Ed Podolak, 1968

Career—1,710 by Ed Podolak, 1966-67-68

Times Carried from Scrimmage

Game—31 by Bill Reichardt vs Minnesota, 1951

Season—178 by Bill Reichardt, 1951

Career—407 by Ed Podolak, 1966-67-68

Pass Attempts

Game—49 by Gary Snook (26 comp.; 310 yds.) vs Purdue, 1964

Season—311 by Gary Snook (151 comp.), 1964

Career—631 by Gary Snook (280 comp.), 1963-64-65

Pass Completions

Game—27 by Mike Cilek (48 att., 316 yds.) vs Illinois, 1967

Season—151 by Gary Snook, 1964

Career—280 by Gary Snook, 1963-64-65

Yards Passing

Game—316 by Mike Cilek (27 of 48) vs Illinois, 1967

Season—2,062 by Gary Snook, 1964

Career—3,738 by Gary Snook, 1963-64-65

Touchdown Passes

Game—5 by Fred Riddle vs Indiana, 1963

Season—12 by Randy Duncan, 1958

Career—23 by Randy Duncan, 1956-57-58

Pass Receptions

Game—12 by Al Bream (160 yds.) vs Illinois, 1967

Season—59 by Karl Noonan (933 yds.), 1964

Career—114 by Al Bream, 1966-67-68

Yards Receiving

Game—164 by Jim Gibbons (9 catches) vs Wisconsin, 1957

Season—933 by Karl Noonan (59 catches), 1964

Career—1,642 by Al Bream, 1966-67-68

Touchdown Receptions

Game—3 by Erwin Prasse vs Indiana, 1939; Emlen Tunnell vs Indiana, 1947

Season—6 by Jack Dittmer, 1949; George Rice, 1951; Paul Krause, 1963;
Kerry Reardon, 1969

Career—13 by Jack Dittmer, 1946-48-49

Total Offense

Game—337 by Larry Lawrence vs Purdue, 1969

Season—2,086 by Larry Lawrence, 1969

Career—4,026 by Ed Podolak, 1966-67-68

Miscellaneous

Punt Returns, Game—9 by Nile Kinnick vs Indiana, 1939

Punt Return Yards, Game—201 by Nile Kinnick vs Indiana, 1939

Kickoff Returns, Game—6 by Nile Kinnick vs Indiana, 1939

Kickoff Return Yards, Game—171 by Nile Kinnick vs Indiana, 1939

Scoring by Placement—13 by Alan Schuette vs Washington State, 1969

Punts, Game—16 by Nile Kinnick vs Notre Dame, 1939

Punting Yards, Game—731 by Nile Kinnick vs Notre Dame, 1939

Punting Average, Game—48.6 by Glenn Drahm vs Wisconsin, 1950

Interceptions, Season—8 by Nile Kinnick, 1939

Interceptions, Career—18 by Nile Kinnick, 1937-38-39

Blocked Punts, Game—2 by Mike Enich vs Purdue, 1939

Longest Plays

Run—96 by Eddie Vincent vs Purdue (TD), 1954

Pass—87, Gary Snook to Craig Nourse vs Minnesota (TD), 1964

Field Goal—45 by Bob Prescott vs Minnesota, 1957

Punt Return—94 by Bob Longley vs Oregon (TD), 1949

Kickoff Return—100 by George (Dusty) Rice vs Purdue (TD), 1951, and
Joe Williams vs Notre Dame (TD), 1961

Interception Return—94 by Bob Stearnes vs Montana (TD), 1954

Fumble Return—84 by Dayton Perry vs Purdue (TD), 1960

Blocked Punt Return—66 by Jim Walker vs Wisconsin (TD), 1940

Punt—83 by Lonnie Rogers vs Oregon State, 1962

Scores by Years

*at Iowa City

1889 (0-1-0)
Grinnell L 0-24

1890 (1-1-0)
Grinnell* L 6-11
Iowa Wes'an W 91-0

1891 (3-2-0)
Cornell* W 64-6
Minnesota* L 4-42
Grinnell L 4-6
Nebraska W 22-0
Kansas W 18-14

1892 (3-2-1)
Knox* W 44-0
Coe W 48-0
Kansas L 4-24
Missouri L 0-22
Nebraska T 10-10
Grinnell* W 18-12

1893 (3-4-0)
Coe W 56-0
Denver A. C. L 0-58
Luther* W 32-0
Kansas L 24-35
Grinnell L 14-36
Missouri* W 34-12
Nebraska L 18-20

1894 (4-4-1)
Iowa State* L 8-16
Cornell W 60-0
Augustana W 34-0
Chicago T 18-18
Wisconsin L 0-44
Kansas* W 14-12
Grinnell* W 6-0
Missouri L 6-32
Nebraska L 0-36

1895 (2-5-0)
Doane* L 0-10
Parsons W 28-0
Iowa State* L 0-24
Kansas L 0-54
Missouri L 0-34
Nebraska L 0-6
Penn Coll. W 14-12

1896 (7-1-1)
Drake* W 32-0
Chicago L 0-6
Kansas* W 6-0
Wilton* W 27-0
Missouri W 12-0
Grinnell W 15-6
DM (YMCA) W 34-0
Nebraska T 0-0
Nebraska W 6-0

1897 (4-4-0)
Wilton* W 22-4
Northwestern W 12-6
P. and S.* L 0-14
Kansas L 0-56
Iowa State* L 0-6
Drake W 16-0
Grinnell* W 16-12
Nebraska L 0-6

1898 (3-4-2)
Knox T 0-0
Chicago L 0-36
Drake* L 5-18
Upper Iowa* W 23-5
Rush L 11-15
Iowa Tchrs. L 5-11
Grinnell T 5-5
Simpson* W 12-0
Nebraska W 6-5

1899 (8-0-1)
Iowa Tchrs.* W 22-0
Chicago T 5-5
Penn* W 35-0
Rush* W 17-0
Iowa State* W 5-0
Nebraska W 30-0
Grinnell* W 16-0
Knox W 33-0
Illinois W 58-0

1900 (7-0-1)
Upper Iowa* W 57-0
Iowa Tchrs.* W 68-0
Simpson* W 47-0
Drake* W 26-0
Chicago W 17-0
Michigan W 28-5
Grinnell* W 63-2
Northwestern T 5-5

1901 (6-3-0)
Iowa Tchrs.* W 16-0
Drake W 6-5
Iowa State* W 12-0
Minnesota L 0-16
Coe* W 11-0
Knox* W 23-6
Illinois* L 0-27
Grinnell* W 17-11
Michigan L 0-50

1902 (5-4-0)
Iowa Tchrs.* W 26-5
Drake W 12-0
Simpson W 10-0
Minnesota* L 0-34
Iowa State* W 12-6
Michigan L 0-107
Wash., Mo. W 61-0
Missouri L 0-6
Illinois L 0-80

1903 (9-2-0)
Cornell* W 6-0
Coe* W 16-0
Iowa Tchrs.* W 29-0
Drake W 22-6
Minnesota L 0-75
Grinnell W 17-0
Nebraska L 6-17
Simpson W 35-2
Missouri W 16-0
Illinois* W 12-0
Wash., Mo. W 12-2

1904 (7-4-0)
Coe* W 17-0
Augustana* W 33-2
Cornell* W 88-0
Drake W 17-0
Chicago L 0-39
Iowa Tchrs.* W 11-5
Iowa State* W 10-6
Nebraska L 12-17
Grinnell* W 69-0
Illinois L 0-29
Minnesota L 0-11

1905 (8-2-0)
Coe W 27-0
Monmouth W 40-0
Chicago L 0-42
Minnesota L 0-39
Iowa Tchrs. W 41-5
Grinnell W 46-0
Des Moines W 72-0
Drake W 44-0
Iowa State W 8-0
St. Louis W 31-0

1906 (2-3-0)
Missouri* W 24-4
Wisconsin L 4-18
Coe* W 15-12
Iowa State* L 0-2
St. Louis L 0-39

1907 (3-2-0)
Missouri* W 21-6
Drake W 25-4
Wisconsin* L 5-6
Illinois* W 25-12
Iowa State L 14-20

1908 (2-5-0)
Coe* W 92-0
Missouri L 5-10
Morningside W 16-0
Nebraska* L 8-11
Illinois L 0-22
Drake* L 6-12
Kansas* L 5-10

1909 (2-4-1)
Minnesota L 0-41
Cornell* W 3-0
Nebraska T 6-6
Missouri* L 12-13
Drake L 14-17
Iowa State* W 16-0
Kansas L 7-20

1910 (5-2-0)
Morningside W 12-0
Northwestern L 5-10
Missouri L 0-5
Purdue* W 16-0
Iowa State W 2-0
Drake* W 21-0
Wash., Mo. W 38-0

1911 (3-4-0)

Morningside	W 11-5
Cornell	L 0-3
Minnesota*	L 6-24
Wisconsin	L 0-12
Purdue	W 11-0
Iowa State*	L 0-9
Northwestern*	W 6-0

1912 (4-3-0)

Iowa Tchrs.*	W 35-7
Cornell*	W 31-0
Chicago	L 14-34
Minnesota	L 7-56
Indiana	W 13-6
Iowa State	W 20-7
Wisconsin*	L 10-28

1913 (5-2-0)

Iowa Tchrs.*	W 45-3
Cornell*	W 76-0
Chicago	L 6-23
Northwestern	W 78-6
Indiana*	W 60-0
Iowa State*	W 45-7
Nebraska	L 0-12

1914 (4-3-0)

Iowa Tchrs.*	W 95-0
Cornell*	W 49-0
Chicago	L 0-7
Minnesota*	L 0-7
Northwestern	W 27-0
Iowa State	W 26-6
Nebraska*	L 7-16

1915 (3-4-0)

Cornell	W 33-0
Morningside	W 17-6
Northwestern*	W 9-6
Minnesota	L 13-51
Purdue	L 13-19
Iowa State*	L 0-16
Nebraska	L 7-51

1916 (4-3-0)

Cornell*	W 31-6
Grinnell*	W 17-7
Purdue*	W 24-6
Minnesota	L 0-67
Northwestern	L 13-20
Iowa State	W 19-16
Nebraska*	L 17-34

1917 (3-5-0)

Cornell*	W 22-13
Nebraska	L 0-47
Grinnell*	L 0-10
Wisconsin	L 0-20
Great Lakes	L 14-23
South Dakota*	W 35-0
Northwestern	L 14-25
Iowa State*	W 6-3

1918 (6-2-1)

Great Lakes*	L 0-10
Nebraska	W 12-0
Coe*	W 27-0
Cornell*	W 34-0
Illinois*	L 0-19
Minnesota*	W 6-0
Iowa State*	W 21-0
Northwestern*	W 23-7
Camp Dodge	T 0-0

1919 (5-2-0)

Nebraska*	W 18-0
Illinois	L 7-9
Minnesota	W 9-6
South Dakota*	W 26-13
Northwestern	W 14-7
Chicago	L 6-9
Iowa State*	W 10-0

1920 (5-2-0)

Indiana	W 14-7
Cornell*	W 63-0
Illinois	L 3-20
Chicago	L 0-10
Northwestern*	W 20-0
Minnesota*	W 28-7
Iowa State	W 14-10

1921 (7-0-0)

Knox*	W 52-14
Notre Dame*	W 10-7
Illinois*	W 14-2
Purdue	W 13-6
Minnesota	W 41-7
Indiana*	W 41-0
Northwestern	W 14-0

1922 (7-0-0)

Knox*	W 61-0
Yale	W 6-0
Illinois	W 8-7
Purdue*	W 56-0
Minnesota*	W 28-14
Ohio State	W 12-9
Northwestern*	W 37-3

1923 (5-3-0)

Knox*	W 44-3
Okla. A&M*	W 20-0
Purdue*	W 7-0
Illinois*	L 6-9
Ohio State	W 20-0
Michigan*	L 3-9
Minnesota	L 7-20
Northwestern	W 17-14

1924 (6-1-1)

SE Okla.*	W 43-0
Ohio State*	T 0-0
Lawrence*	W 13-5
Minnesota*	W 13-0
Illinois	L 0-36
Butler*	W 7-0
Wisconsin	W 21-7
Michigan*	W 9-2

1925 (5-3-0)

Arkansas*	W 25-0
St. Louis*	W 41-0
Illinois*	W 12-10
Ohio State	W 15-0
Wabash*	W 28-7
Wisconsin*	L 0-6
Minnesota	L 0-33
Southern Cal.	L 0-18

1926 (3-5-0)

Colo. Tchrs.*	W 24-0
North Dakota*	W 40-7
Illinois	L 6-13
Ohio State	L 6-23
Carroll*	W 21-0
Minnesota*	L 0-41
Wisconsin	L 10-20
Northwestern	L 6-13

1927 (4-4-0)

Monmouth*	W 32-6
Ohio State*	L 6-13
Wabash*	W 38-0
Minnesota	L 0-38
Denver*	W 15-0
Illinois*	L 0-14
Wisconsin	W 16-0
Northwestern	L 0-12

1928 (6-2-0)

Monmouth*	W 26-0
Chicago	W 13-0
Ripon*	W 61-6
Minnesota*	W 7-6
South Dakota*	W 19-0
Ohio State	W 14-7
Wisconsin*	L 0-13
Michigan	L 7-10

1929 (4-2-2)

Carroll*	W 46-0
Monmouth*	W 46-0
Ohio State	L 6-7
Illinois*	T 7-7
Wisconsin	W 14-0
Minnesota*	W 9-7
Purdue	L 0-7
Michigan	T 0-0

1930 (4-4-0)

Bradley Tech*	W 38-12
Okla. A&M*	L 0-6
Centenary*	L 12-19
Purdue*	L 0-20
Detroit	W 7-3
Marquette	L 0-7
Penn State*	W 19-0
Nebraska*	W 12-7

1931 (1-6-1)

Pittsburgh*	L 0-20
Texas A&M	L 0-29
Indiana*	T 0-0
Minnesota	L 0-34
G. Washington*	W 7-0
Nebraska	L 0-7
Purdue	L 0-22
Northwestern*	L 0-19

1932 (1-7-0)

Bradley Tech*	W 31-7
Wisconsin	L 0-34
Indiana	L 0-12
Minnesota*	L 6-21
G. Washington	L 6-21
Nebraska*	L 13-14
Purdue*	L 0-18
Northwestern	L 6-44

1933 (5-3-0)

Northwestern	W 7-0
Bradley Tech*	W 38-0
Wisconsin*	W 26-7
Minnesota	L 7-19
Iowa State*	W 27-7
Michigan	L 6-10
Purdue	W 14-6
Nebraska	L 6-7

1934 (2-5-1)

South Dakota*	W	34-0
Northwestern	W	20-7
Nebraska	L	13-14
Iowa State	L	6-31
Minnesota*	L	12-48
Indiana	T	0-0
Purdue*	L	6-13
Ohio State	L	7-40

1935 (4-2-2)

Bradley Tech*	W	26-0
South Dakota*	W	47-2
Colgate*	W	12-6
Illinois	W	19-0
Indiana*	T	6-6
Minnesota*	L	6-13
Purdue	L	6-12
Northwestern	T	0-0

1936 (3-4-1)

Carleton*	W	14-0
Northwestern	L	7-18
South Dakota*	W	33-7
Illinois*	T	0-0
Indiana	L	6-13
Minnesota	L	0-52
Purdue*	L	0-13
Temple	W	25-0

1937 (1-7-0)

Washington	L	0-14
Bradley Tech*	W	14-7
Wisconsin	L	6-13
Michigan*	L	6-7
Purdue	L	0-13
Minnesota*	L	10-35
Indiana*	L	0-3
Nebraska	L	0-28

1938 (1-6-1)

UCLA	L	3-27
Wisconsin*	L	13-31
Chicago	W	27-14
Colgate*	L	0-14
Purdue*	T	0-0
Minnesota	L	0-28
Indiana	L	3-7
Nebraska*	L	0-14

1939 (6-1-1)

South Dakota*	W	41-0
Indiana*	W	32-29
Michigan	L	7-27
Wisconsin	W	19-13
Purdue	W	4-0
Notre Dame*	W	7-6
Minnesota*	W	13-9
Northwestern	T	7-7

1940 (4-4-0)

South Dakota*	W	46-0
Wisconsin*	W	30-12
Indiana	L	6-10
Minnesota	L	6-34
Purdue*	L	6-21
Nebraska	L	6-14
Notre Dame	W	7-0
Illinois*	W	18-7

1941 (3-5-0)

Drake*	W	25-8
Michigan	L	0-6
Wisconsin	L	0-23
Purdue	L	6-7
Indiana*	W	13-7
Illinois	W	21-0
Minnesota*	L	13-34
Nebraska	L	13-14

1942 (6-4-0)

Wash., Mo.*	W	26-7
Nebraska*	W	27-0
Great Lakes*	L	0-25
Camp Grant*	W	33-16
Illinois*	L	7-12
Indiana	W	14-13
Purdue*	W	13-7
Wisconsin*	W	6-0
Minnesota	L	7-27
Michigan	L	14-28

1943 (1-6-1)

Great Lakes	L	7-21
Wisconsin*	L	5-7
Iowa Preflight*	L	0-25
Indiana*	T	7-7
Purdue	L	7-28
Illinois*	L	10-19
Minnesota	L	14-33
Nebraska	W	33-13

1944 (1-7-0)

Ohio State	L	0-34
Illinois	L	6-40
Purdue*	L	7-26
Indiana	L	0-32
Nebraska*	W	27-6
Wisconsin	L	7-26
Minnesota*	L	0-46
Iowa Preflight*	L	6-30

1945 (2-7-0)

Berg AAF*	W	14-13
Ohio State	L	0-42
Purdue	L	0-40
Indiana*	L	20-52
Notre Dame	L	0-56
Wisconsin*	L	7-27
Illinois	L	7-48
Minnesota*	W	20-19
Nebraska	L	6-13

1946 (5-4-0)

N. Dakota St.*	W	39-0
Purdue*	W	16-0
Michigan	L	7-14
Nebraska*	W	21-7
Indiana	W	13-0
Notre Dame*	L	6-41
Illinois*	L	0-7
Wisconsin	W	21-7
Minnesota	L	6-16

1947 (3-5-1)

N. Dakota St.*	W	59-0
UCLA	L	7-22
Illinois*	L	12-35
Indiana*	W	27-14
Ohio State	T	13-13
Notre Dame	L	0-21
Purdue	L	0-21
Wisconsin	L	14-46
Minnesota*	W	13-7

1948 (4-5-0)

Marquette*	W	14-12
Indiana	L	0-7
Ohio State	W	14-7
Purdue*	L	13-20
Notre Dame*	L	12-27
Wisconsin*	W	19-13
Illinois	L	0-14
Minnesota*	L	21-28
Boston U.	W	34-14

1949 (4-5-0)

UCLA*	L	25-41
Purdue	W	21-7
Illinois*	L	14-20
Indiana*	W	35-9
Northwestern*	W	28-21
Oregon U.*	W	34-31
Minnesota	L	7-55
Wisconsin	L	13-35
Notre Dame	L	7-28

1950 (3-5-1)

Southern Cal.	W	20-14
Indiana	L	7-20
Wisconsin*	L	0-14
Purdue*	W	33-21
Ohio State	L	21-83
Minnesota	W	13-0
Illinois*	L	7-21
Notre Dame*	T	14-14
Miami (Fla.)	L	6-14

1951 (2-5-2)

Kansas State*	W	16-0
Purdue	L	30-34
Pittsburgh*	W	34-17
Michigan*	L	0-21
Ohio State	L	21-47
Minnesota*	T	20-20
Illinois	L	13-40
Wisconsin	L	7-34
Notre Dame	T	20-20

1952 (2-7-0)

Pittsburgh	L	14-26
Indiana	L	13-20
Purdue	L	14-41
Wisconsin*	L	13-42
Ohio State*	W	8-0
Minnesota	L	7-17
Illinois*	L	13-33
Northwestern	W	39-14
Notre Dame*	L	0-27

1953 (5-3-1)

Mich. State*	L	7-21
Wash. State*	W	54-12
Michigan	L	13-14
Wyoming*	W	21-7
Indiana*	W	19-13
Wisconsin	L	6-10
Purdue	W	26-0
Minnesota*	W	27-0
Notre Dame	T	14-14

1954 (5-4-0)

Mich. State*	W 14-10
Montana*	W 48-6
Michigan	L 13-14
Ohio State	L 14-20
Indiana	W 27-14
Wisconsin*	W 13-7
Purdue*	W 25-14
Minnesota	L 20-22
Notre Dame*	L 18-34

1955 (3-5-1)

Kansas State*	W 28-7
Wisconsin	L 14-37
Indiana*	W 20-6
Purdue*	T 20-20
UCLA	L 13-33
Michigan	L 21-33
Minnesota*	W 26-0
Ohio State	L 10-20
Notre Dame	L 14-17

1956 (9-1-0)

Indiana	W 27-0
Oregon State*	W 14-13
Wisconsin*	W 13-7
Hawaii*	W 34-0
Purdue	W 21-20
Michigan*	L 14-17
Minnesota	W 7-0
Ohio State*	W 6-0
Notre Dame*	W 48-8
#Oregon State	W 35-19

#Rose Bowl

1957 (7-1-1)

Utah State*	W 70-14
Wash. State*	W 20-13
Indiana	W 47-7
Wisconsin*	W 21-7
Northwestern	W 6-0
Michigan	T 21-21
Minnesota*	W 44-20
Ohio State	L 13-17
Notre Dame	W 21-13

1958 (8-1-1)

TCU*	W 17-0
Air Force*	T 13-13
Indiana*	W 34-13
Wisconsin	W 20-9
Northwestern*	W 26-20
Michigan	W 37-14
Minnesota	W 28-6
Ohio State*	L 28-38
Notre Dame*	W 31-21
#California	W 38-12

#Rose Bowl

1959 (5-4-0)

California	W 42-12
Northwestern*	L 10-14
Mich. State*	W 37-8
Wisconsin	L 16-25
Purdue	L 7-14
Kansas State*	W 53-0
Minnesota*	W 33-0
Ohio State	W 16-7
Notre Dame*	L 19-20

1960 (8-1-0)

Oregon State*	W 22-12
Northwestern	W 42-0
Mich. State	W 27-15
Wisconsin*	W 28-21
Purdue*	W 21-14
Kansas*	W 21-7
Minnesota	L 10-27
Ohio State*	W 35-12
Notre Dame	W 28-0

1961 (5-4-0)

California*	W 28-7
Southern Cal.	W 35-34
Indiana*	W 27-8
Wisconsin*	W 47-15
Purdue	L 0-9
Ohio State	L 13-29
Minnesota*	L 9-16
Michigan	L 14-23
Notre Dame*	W 42-21

1962 (4-5-0)

Oregon State*	W 28-8
Southern Cal.*	L 0-7
Indiana	W 14-10
Wisconsin	L 14-42
Purdue*	L 3-26
Ohio State*	W 28-14
Minnesota	L 0-10
Michigan*	W 28-14
Notre Dame	L 12-35

1963 (3-3-2)

Wash. State*	T 14-14
Washington	W 17-7
Indiana*	W 37-26
Wisconsin*	L 7-10
Purdue	L 0-14
Ohio State	L 3-7
Minnesota*	W 27-13
Michigan	T 21-21
Notre Dame	canceled

1964 (3-6-0)

Idaho*	W 34-24
Washington*	W 28-18
Indiana	W 21-20
Wisconsin	L 21-31
Purdue*	L 14-19
Ohio State*	L 19-21
Minnesota	L 13-14
Michigan*	L 20-34
Notre Dame	L 0-28

1965 (1-9-0)

Wash. State*	L 0-7
Oregon State	W 27-7
Wisconsin	L 13-16
Purdue*	L 14-17
Minnesota*	L 3-14
Northwestern	L 0-9
Indiana	L 17-21
Mich. State*	L 0-35
Ohio State	L 0-38
N.C. State*	L 20-28

1966 (2-8-0)

Arizona*	W 31-20
Oregon State*	L 3-17
Wisconsin*	L 0-7
Purdue	L 0-35
Minnesota	L 0-17
Northwestern*	L 15-24
Indiana*	W 20-19
Mich. State	L 7-56
Ohio State*	L 10-14
Miami (Fla.)	L 0-44

1967 (1-8-1)

TCU*	W 24-9
Oregon State*	L 18-38
Notre Dame	L 6-56
Indiana	L 17-21
Wisconsin	T 21-21
Purdue*	L 22-41
Minnesota*	L 0-10
Northwestern	L 24-39
Ohio State	L 10-21
Illinois*	L 19-21

1968 (5-5-0)

Oregon State*	W 21-20
TCU	L 17-28
Notre Dame*	L 28-51
Indiana*	L 34-38
Wisconsin*	W 41-0
Purdue	L 14-44
Minnesota	W 35-28
Northwestern*	W 68-34
Ohio State*	L 27-33
Illinois	W 37-13

1969 (5-5-0)

Oregon State*	L 14-42
Wash. State*	W 61-35
Arizona*	W 31-19
Wisconsin	L 17-23
Purdue	L 31-35
Mich. State*	W 19-18
Minnesota*	L 8-35
Indiana	W 28-17
Michigan*	L 6-51
Illinois	W 40-0

Record by Years

Year	Coach	Big Ten				All Games		
		W-L-T	Pts.	Opp.	Rank	W-L-T	Pts.	Opp.
1889	None					0-1-0	0	24
1890	None					1-1-0	97	14
1891	None					3-2-0	112	68
1892	E. A. Dalton					3-2-1	124	68
1893	Benjamin Donnelly					3-4-0	178	161
1894	Roger Sherman					4-4-1	146	158
1895	None					2-5-0	42	140
1896	A. E. Bull					7-1-1	132	12
1897	Otto Wagonhurst					4-4-0	66	104
1898	Alden Knipe					3-4-2	67	95
1899	Alden Knipe					8-0-1	221	5
1900	Alden Knipe	2-0-1	50	10	T1	7-0-1	311	12
1901	Alden Knipe	0-3-0	0	93	T7	6-3-0	85	115
1902	Alden Knipe	0-3-0	0	221	T7	5-4-0	121	238
1903	John Chalmers	1-1-0	12	75	5	9-2-0	171	102
1904	John Chalmers	0-3-0	0	79	T7	7-4-0	257	109
1905	John Chalmers	0-2-0	0	81	T7	8-2-0	309	86
1906	Mark Catlin	0-1-0	4	18	T6	2-3-0	43	75
1907	Mark Catlin	1-1-0	30	18	4	3-2-0	90	48
1908	Mark Catlin	0-1-0	0	22	T6	2-5-0	132	65
1909	John Griffith	0-1-0	0	41	T7	2-4-1	58	97
1910	Jess Hawley	1-1-0	21	10	4	5-2-0	94	15
1911	Jess Hawley	2-2-0	23	36	T4	3-4-0	34	53
1912	Jess Hawley	1-3-0	44	124	T6	4-3-0	130	138
1913	Jess Hawley	2-1-0	144	29	T2	5-2-0	310	51
1914	Jess Hawley	1-2-0	27	14	7	4-3-0	205	36
1915	Jess Hawley	1-2-0	35	76	7	3-4-0	92	149
1916	Howard Jones	0-2-0	37	93	T8	4-3-0	121	156
1917	Howard Jones	0-2-0	14	45	T8	3-5-0	91	141
1918	Howard Jones	2-1-0	29	26	T4	6-2-1	123	36
1919	Howard Jones	2-2-0	36	31	6	5-2-0	90	44
1920	Howard Jones	3-2-0	65	44	5	5-2-0	142	54
1921	Howard Jones	5-0-0	123	15	1	7-0-0	185	36
1922	Howard Jones	5-0-0	141	33	T1	7-0-0	212	33
1923	Howard Jones	3-3-0	60	52	T5	5-3-0	124	55
1924	Burton Ingwersen	3-1-1	43	45	T2	6-1-1	106	50
1925	Burton Ingwersen	2-2-0	27	49	T4	5-3-0	122	74
1926	Burton Ingwersen	0-5-0	28	110	T8	3-5-0	113	117
1927	Burton Ingwersen	1-4-0	22	77	T9	4-4-0	107	83
1928	Burton Ingwersen	3-2-0	41	36	T4	6-2-0	147	42

Year	Coach	W-L-T	Big Ten			All Games		
			Pts.	Opp.	Rank	W-L-T	Pts.	Opp.
1929	Burton Ingwersen	2-2-2	36	28	T5	4-2-2	128	28
1930	Burton Ingwersen	0-1-0	0	20	T9	4-4-0	88	74
1931	Burton Ingwersen	0-3-1	0	75	T9	1-6-1	7	131
1932	O. M. (Ossie) Solem	0-5-0	12	129	10	1-7-0	62	171
1933	O. M. (Ossie) Solem	3-2-0	60	42	T5	5-3-0	131	56
1934	O. M. (Ossie) Solem	1-3-1	45	108	T8	2-5-1	98	153
1935	O. M. (Ossie) Solem	1-2-2	37	31	8	4-2-2	122	39
1936	O. M. (Ossie) Solem	0-4-1	13	96	T8	3-4-1	85	103
1937	Irl Tubbs	0-5-0	22	71	T9	1-7-0	36	120
1938	Irl Tubbs	1-3-1	43	80	8	1-6-1	46	135
1939	Edward Anderson	4-1-1	82	85	2	6-1-1	130	91
1940	Edward Anderson	2-3-0	66	84	T6	4-4-0	125	98
1941	Edward Anderson	2-4-0	53	77	6	3-5-0	91	99
1942	Edward Anderson	3-3-0	61	87	T5	6-4-0	148	135
1943	E. P. (Slip) Madigan	0-4-1	43	94	9	1-6-1	83	153
1944	E. P. (Slip) Madigan	0-6-0	20	204	T8	1-7-0	53	240
1945	Clem Crowe	1-5-0	54	228	T8	2-7-0	74	310
1946	Edward Anderson	3-3-0	63	44	4	5-4-0	129	92
1947	Edward Anderson	2-3-1	79	136	T6	3-5-1	145	179
1948	Edward Anderson	2-4-0	67	89	T5	4-5-0	127	142
1949	Edward Anderson	3-3-0	118	147	T5	4-5-0	184	247
1950	Leonard Raffensperger	2-4-0	81	159	6	3-5-1	121	201
1951	Leonard Raffensperger	0-5-1	91	196	9	2-5-2	161	233
1952	Forest Evashevski	2-5-0	107	167	T6	2-7-0	121	220
1953	Forest Evashevski	3-3-0	98	58	T5	5-3-1	187	91
1954	Forest Evashevski	4-3-0	126	101	5	5-4-0	192	141
1955	Forest Evashevski	2-3-1	111	116	7	3-5-1	166	173
1956	Forest Evashevski	5-1-0	88	54	1	9-1-0	219	84
1957	Forest Evashevski	4-1-1	152	72	3	7-1-1	263	112
1958	Forest Evashevski	5-1-0	173	100	1	8-1-1	272	146
1959	Forest Evashevski	3-3-0	119	68	6	5-4-0	233	100
1960	Forest Evashevski	5-1-0	163	89	T1	8-1-0	234	108
1961	Jerry Burns	2-4-0	110	100	T7	5-4-0	215	162
1962	Jerry Burns	3-3-0	87	116	T5	4-5-0	127	166
1963	Jerry Burns	2-3-1	95	91	8	3-3-2	126	112
1964	Jerry Burns	1-5-0	108	139	T9	3-6-0	170	209
1965	Jerry Burns	0-7-0	47	150	10	1-9-0	94	192
1966	Ray Nagel	1-6-0	52	172	10	2-8-0	86	253
1967	Ray Nagel	0-6-1	113	174	T9	1-8-1	161	277
1968	Ray Nagel	4-3-0	256	190	T5	5-5-0	322	289
1969	Ray Nagel	3-4-0	149	179	T5	5-5-0	255	275

Herky and the Hawkeyes

The University of Iowa borrowed its athletic nickname from the state of Iowa many years ago. The name Hawkeye was originally applied to a hero in a fictional novel, *The Last of the Mohicans*, written by James Fenimore Cooper. Author Cooper had the Delaware Indians bestow the name on a white scout who lived and hunted with them.



In 1838, 12 years after the book was published, people in the territory of Iowa acquired the nickname, chiefly through the efforts of Judge David Rorer of Burlington and James G. Edwards of Ft. Madison. Edwards, editor of the Ft. Madison *Patriot*, moved his paper to Burlington in 1843 and renamed it the *Burlington Hawk-Eye*. The two men continued their campaign to popularize the name and were rewarded when territorial officials gave it their formal approval.

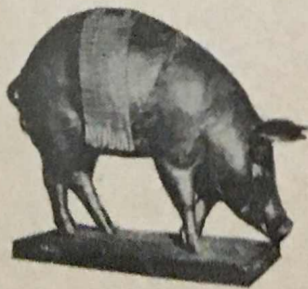
The Hawkeye nickname gained a tangible symbol in 1948 when a cartoon character, later to be named Herky the Hawk, was hatched. The creator was Richard Spencer III, instructor of journalism. The impish hawk was an immediate hit and he acquired a name through a state-wide contest staged by the athletic department. John Franklin, a Belle Plaine alumnus, was the man who suggested Herky.

Since his birth more than 20 years ago, Herky has symbolized Iowa athletics and epitomized University life. He even donned a military uniform during the Korean War and became the insignia of the 124th Fighter Squadron.

During the mid-1950s Herky came to life at a football game as the Iowa mascot with a black leather head and gold felt feathers. Since then Herky has become a familiar figure at Hawkeye athletic events.

Floyd of Rosedale

A bet in 1935 between Minnesota Governor Floyd B. Olson and Iowa Governor Clyde Herring gave birth to Floyd of Rosedale. Tension between the two state universities had been running high and a wager was made in an effort to relieve the situation. After Iowa lost the game, Herring presented Olson with Floyd of Rosedale, a full-blooded champion pig and a brother of Blue Boy of Will Rogers' movie, "State Fair." Olson presented the pig to the University of Minnesota and commissioned St. Paul sculptor Charles Brioscho to capture Floyd's image. The result is a bronze pig 21 inches long and 15 inches high. Floyd is currently in residence in Minneapolis, but the Hawkeyes hope to regain possession of the pig when they play at Minnesota this fall.



Iowa Stadium

The Hawkeyes have played 188 games in 41 seasons in Iowa Stadium, an arena that was built strictly for football and is located in the center of the University's athletic complex. The stadium was dedicated in October, 1929. Building cost was \$500,000. The stadium has undergone many renovations, including additional permanent seats and a new pressbox, which was constructed in 1958 and cost more than the original price of the stadium. A single-game attendance record was established in 1961 when 60,150 watched Iowa beat Wisconsin. Hawkeye teams have won 101 games, lost 76, and tied 11 in Iowa Stadium. For Big Ten games only, the record is 46-54-8.

Other stadium records:

Iowa points: 70, Utah State 14, 1957

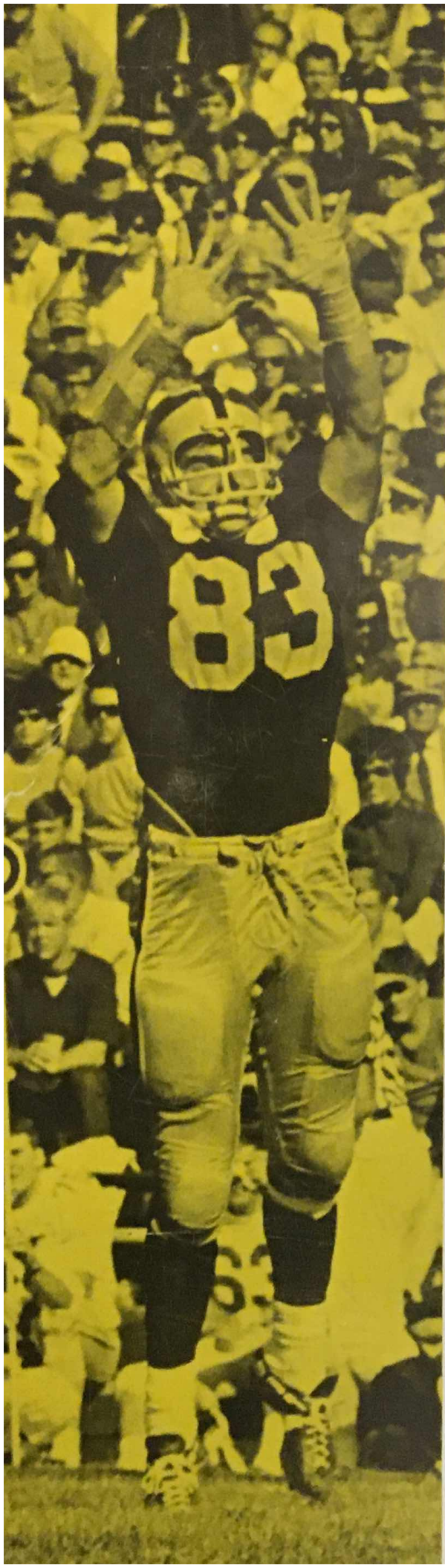
Opponent points: Indiana 52, Iowa 20, 1945

Total points: 102 (Iowa 68, Northwestern 34, 1968)

Big Ten winning margin: 34 (Iowa 68, Northwestern 34, 1968)

Big Ten losing margin: 46 (Minnesota 46, Iowa 0, 1944)





Hawkeye Schedule

September 19
at Portland

Oregon State
8:00 PDT

September 26
at Iowa City

Southern Cal
1:30 CDT

October 3
at Tucson

Arizona
7:30 MST

October 10
at Iowa City

Wisconsin
1:30 CDT

October 17
at Iowa City
Homecoming

Purdue
1:30 CDT

October 24
at East Lansing

Michigan State
1:30 EST

October 31
at Minneapolis

Minnesota
1:30 CDT

November 7
at Iowa City
Dad's Day

Indiana
1:30 CST

November 14
at Ann Arbor

Michigan
1:30 EST

November 21
at Iowa City

Illinois
1:30 CST