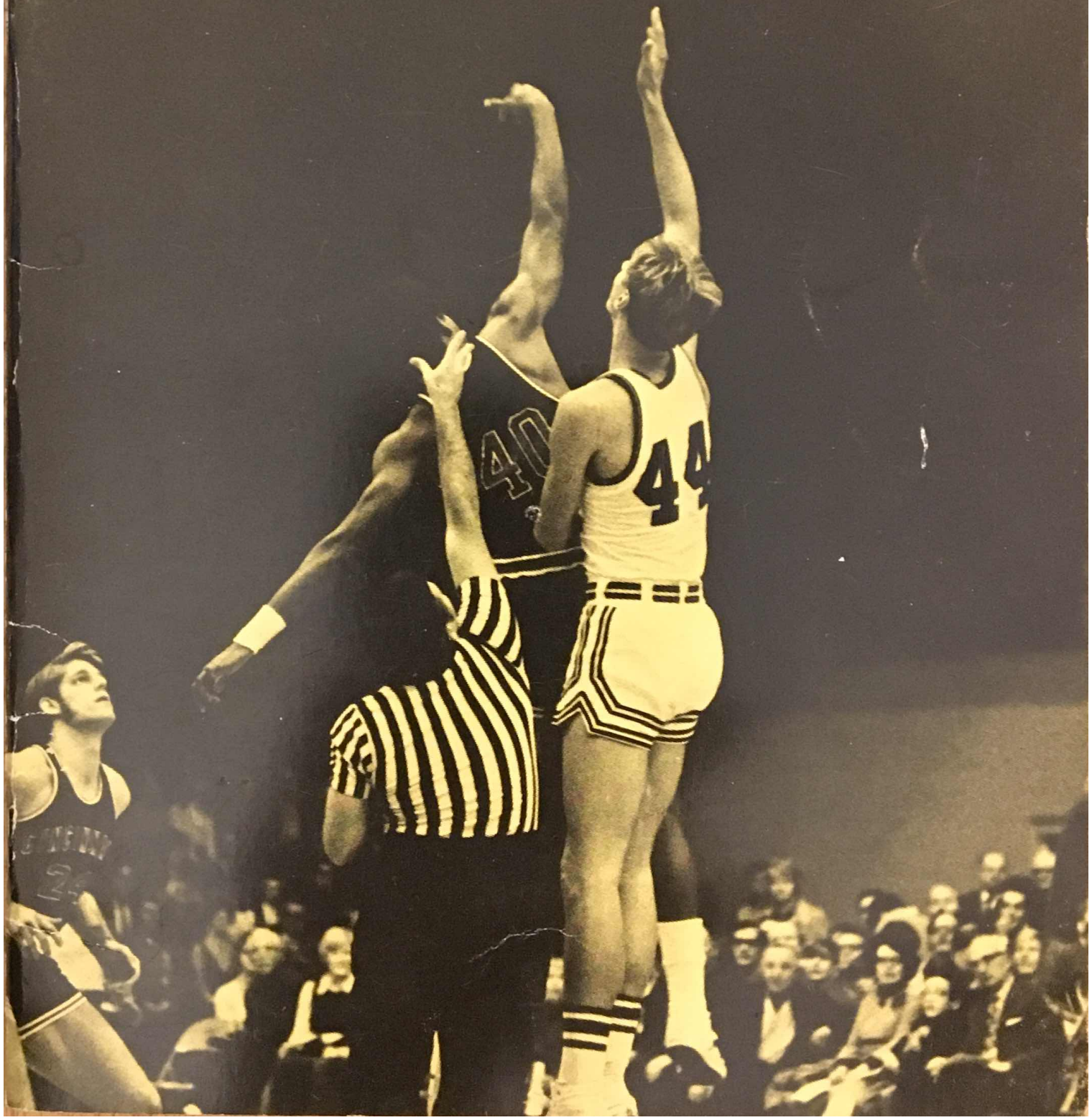


71-72

BASKETBALL
GUIDE

I OWA



The University of Iowa

1971-72 Basketball Guide and Record Book

Table of Contents

Media Information	2	Most Valuable Hawkeyes	18
Staff Directory	3	Individual Records	19
Schedule	4	Scoring Leaders by Games	20
1970-71 Results	5	The 500-Point Club	21
Road Headquarters	5	Scoring Leaders by Years	22
The University	5	All-Big Ten Hawkeyes	22
The Athletic Director	6	All-America Hawkeyes	23
The Head Coach	7	Holiday Tourney Appearances	24
Staff Profiles	8	100-Point Games	24
Herky and the Hawkeyes	9	Hawkeyes on TV	25
Freshman Schedule	9	NCAA Tourney Appearances	25
The Outlook	10	Chicago Stadium Appearances	25
Varsity Roster	11	All-Time Foes	26
1970-71 Statistics	12	Non-Conference Series Scores	27
Squad Profiles	12	Best-Attendance Years	27
Game by Game Scoring	16	Big Ten Series Scores	28
Game Comparisons	17	Scores of Recent Years	32
1,000-Point Club	17	Record by Years	34
Team Records	18	Iowa Fieldhouse Records	36

*Compiled and edited by The University of Iowa Sports Information Office.
Distributed free to news media. Available to public for \$1 per copy.*

Number Please

(The Iowa City area code is 319)

	Office	Home		Office	Home
Elliott	353-3810	338-9950	Roberts	353-4871	351-5164
Haddy	353-3038	351-3012	Schultz	353-4912	338-2685
Kuchen	353-3225	351-4802	Wine	353-3038	337-3933

ON THE COVER—Seven-foot junior Kevin Kunnert (44) is expected to be a big man this year for the Hawkeyes, both literally and figuratively.

News Media Information

IOWA FIELDHOUSE is located on the west campus in the University's athletic complex. It is a few minutes' drive from Interstate 80 and the Iowa City airport, about 30 minutes from the Cedar Rapids airport.

PRESS DECK at the Fieldhouse is located on the south side of the playing floor. Use any entrance for admittance.

RADIO DECK at the Fieldhouse is located on the north side of the playing floor. Use any entrance for admittance.

TICKET REQUESTS for press and radio should be directed to George Wine at the Iowa Sports Information Office. Requests should be made early enough in advance to allow time for handling.

ATHLETIC OFFICES are located on the east side of the Fieldhouse.

MOTELS in the immediate Iowa City area include the Alamo Inn (338-3687), Carousel (351-6324), Clayton House (338-1186), Hawkeye Lodge (338-3651), Holiday Inn (338-9771), Howard Johnson Lodge (338-7841), Travel Lodge (338-7901), Ramada Inn (645-2940), Rebel Motel (338-9251).



YOUR HOSTS at Iowa Fieldhouse are George Wine (top) and Phil Haddy of the Hawkeye Sports Information Office.

Wine joined the Iowa Staff in 1968 after working at Northern Iowa and Memphis State. A native of North English, he's an Air Force veteran and an Iowa graduate. George and his wife, Anne, have a son, Steve. Born 6/9/31.

Haddy became a member of the Hawkeye staff in 1971. A native of Cedar Rapids, he holds two degrees from Iowa and has worked for two radio stations. Phil and his wife, Elaine, have a son, Jason. Born 9/10/47.



SPORTS INFORMATION OFFICE is located in Room 110 of the Iowa Fieldhouse (just off East end of the basketball arena). The office phone number is 319/353-3038. The Hawkeye Hot Line (taped comments by Iowa coaches and players) number is 319/353-3571. Linda Schuchert is the office secretary.

Iowa Athletic Staff

Athletic Director	Chalmers (Bump) Elliott (Michigan, '48)
Associate Athletic Director	Francis (Bus) Graham
I-Club Secretary	Bud Suter (Drake, '38)
Sports Information Director	George Wine (Iowa, '56)
Assistant	Phil Haddy (Iowa, '69)
Academic Counselor	Leonard Raffensperger (Iowa, '27)
Medical Supervisor	Dr. Harley Feldick (Iowa, '42)
Physical Therapist	Tom Spalj (St. John's, Minn., '63)
Assistant	Ed Crowley (Purdue, '68)
Equipment Manager	Ron Fairchild (Iowa, '53)
Assistant	Lamont Kelley
Maintenance Supervisor	Darrell Brown

Coaching Staff

Baseball Coach	Duane Banks (Northern Colo., '65)
Basketball Coach	Dick Schultz (Central, Ia., '50)
Assistant	Dick Kuchen (Rider, N.J., '66)
Assistant	Joe Roberts (Ohio State, '60)
Football Coach	Frank Lauterbur (Mount Union, O., '49)
Assistant	Bob Grottkau (Oregon, '59)
Assistant	Jack Harbaugh (Bowling Green, '61)
Assistant	Bob Harrison (Kent State, '64)
Assistant	John Jermier (Coe, '58)
Assistant	Don Lewis (Toledo, '60)
Assistant	Elroy Morand (Florida A&M, '67)
Assistant	Harold Roberts (Bemidji St., Minn., '60)
Assistant	Steve Szabo (Navy, '65)
Golf Coach	Charles Zwiener (Minnesota, '50)
Gymnastics Coach	Dick Holzaepfel (Michigan, '41)
Assistant	Neil Schmitt (Iowa, '70)
Swimming Coach	Robert Allen (Iowa, '39)
Tennis Coach	John Winnie (Cornell, Ia., '36)
Track and Field Coach	Francis Cretzmeyer (Iowa, '36)
Wrestling Coach	Dave McCuskey (Iowa Teachers, '31)
Assistant	Gary Kurdelmeier (Iowa, '58)

1971-72 Schedule

Wed.	Dec.	1	Hardin-Simmons	Iowa City	7:30	CST
Sat.	Dec.	4	UCLA	Los Angeles	8:00	PST
Tue.	Dec.	7	Texas-El Paso	El Paso	7:30	MST
Fri.	Dec.	10	Duquesne	Pittsburgh	8:30	EST
Mon.	Dec.	13	Nevada	Iowa City	7:30	CST
Sat.	Dec.	18	Iowa State	Ames	7:35	CST
Tue.	Dec.	21	Nebraska	Iowa City	7:30	CST
Thur.	Dec.	30	Drake	Iowa City	7:30	CST
Mon.	Jan.	3	Kansas	Iowa City	7:30	CST
Sat.	Jan.	8	Wisconsin (TV)	Madison	1:05	CST
Tue.	Jan.	11	Northwestern	Iowa City	7:30	CST
Sat.	Jan.	22	South Carolina	Chicago Stadium	2:30	CST
Tue.	Jan.	25	Michigan	Ann Arbor	8:00	EST
Sat.	Jan.	29	Minnesota	Iowa City	7:30	CST
Tue.	Feb.	1	Ohio State	Columbus	7:30	EST
Sat.	Feb.	5	Minnesota	Minneapolis	8:00	CST
Tue.	Feb.	8	Ohio State	Iowa City	7:30	CST
Sat.	Feb.	12	Michigan State	Iowa City	7:30	CST
Tue.	Feb.	15	Illinois	Iowa City	7:30	CST
Sat.	Feb.	19	Indiana	Bloomington	4:05	EST
Sat.	Feb.	26	Michigan State	East Lansing	8:05	EST
Sat.	Mar.	4	Purdue	Iowa City	7:30	CST
Tue.	Mar.	7	Illinois	Champaign	8:05	CST
Sat.	Mar.	11	Michigan	Iowa City	7:30	CST

1970-71 Results

Season Record—Won 9, Lost 15

Big Ten—Won 4, Lost 10

at Creighton	L 73-98
at Nebraska	L 71-73
Ashland	W 82-56
at Drake	L 70-72
at Bowling Green	W 89-78
Cincinnati	*L 70-73
Hardin-Simmons	W 90-77
Iowa State	W 87-68
Wyoming	W 87-84
Ohio State	L 76-97
at Michigan St.	L 81-84
Cincinnati	#L 69-73

*overtime

#at Chicago Stadium

Home—6-6

Home—2-5

Road—3-9

Road—2-5

at Northwestern	W 87-85
Illinois	W 92-84
at Wisconsin	W 93-91
Indiana	L 84-86
at Minnesota	L 76-88
Purdue	L 85-87
at Ohio State	L 71-80
Wisconsin	L 83-89
Northwestern	W 78-64
at Indiana	L 88-104
Michigan	L 82-86
at Purdue	L 84-110

1970-71 Attendance Figures

Home Attendance	151,000 (12 games).....	12,583 average
Road Attendance	97,933 (12 games).....	8,161 average
Total Attendance	248,933 (24 games).....	10,744 average

Road Headquarters

UCLA International Motel
 UTEP Desert Inn
 Duquesne Hilton Hotel
 Iowa State Ramada Inn
 Wisconsin Ramada Inn
 S. Carolina Bismarck Hotel

Michigan Hilton Inn
 Ohio State Stouffers Inn
 Minnesota Marriott Inn
 Indiana Holiday Inn
 Mich. State Hospitality Inn
 Illinois Ramada Inn

The University

The University of Iowa was founded in 1847 by the state's first general assembly. First classes were held in 1855. Since then the University has graduated nearly 110,000 men and women. Current enrollment is 20,500.

The first law school west of the Mississippi was established at Iowa in 1868. Today about half the degrees awarded by the University are from its professional colleges, or advanced degrees. Willard L. Boyd is the school's 15th president.

1970-71 Results

Season Record—Won 9, Lost 15

Big Ten—Won 4, Lost 10

at Creighton	L 73-98
at Nebraska	L 71-73
Ashland	W 82-56
at Drake	L 70-72
at Bowling Green	W 89-78
Cincinnati	*L 70-73
Hardin-Simmons	W 90-77
Iowa State	W 87-68
Wyoming	W 87-84
Ohio State	L 76-97
at Michigan St.	L 81-84
Cincinnati	#L 69-73

*overtime

#at Chicago Stadium

Home—6-6

Home—2-5

at Northwestern	W 87-85
Illinois	W 92-84
at Wisconsin	W 93-91
Indiana	L 84-86
at Minnesota	L 76-88
Purdue	L 85-87
at Ohio State	L 71-80
Wisconsin	L 83-89
Northwestern	W 78-64
at Indiana	L 88-104
Michigan	L 82-86
at Purdue	L 84-110

Road—3-9

Road—2-5

1970-71 Attendance Figures

Home Attendance	151,000 (12 games)	12,583 average
Road Attendance	97,933 (12 games)	8,161 average
Total Attendance	248,933 (24 games)	10,744 average

Road Headquarters

UCLA International Motel
 UTEP Desert Inn
 Duquesne Hilton Hotel
 Iowa State Ramada Inn
 Wisconsin Ramada Inn
 S. Carolina Bismarck Hotel

Michigan Hilton Inn
 Ohio State Stouffers Inn
 Minnesota Marriott Inn
 Indiana Holiday Inn
 Mich. State Hospitality Inn
 Illinois Ramada Inn

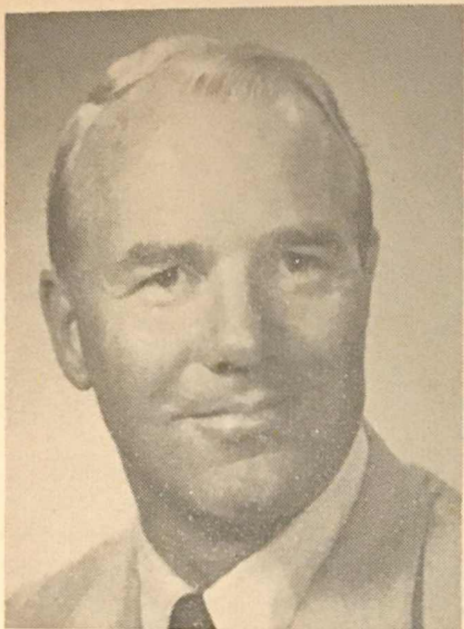
The University

The University of Iowa was founded in 1847 by the state's first general assembly. First classes were held in 1855. Since then the University has graduated nearly 110,000 men and women. Current enrollment is 20,500.

The first law school west of the Mississippi was established at Iowa in 1868. Today about half the degrees awarded by the University are from its professional colleges, or advanced degrees. Willard L. Boyd is the school's 15th president.

The Athletic Director

CHALMERS (BUMP) ELLIOTT, whose background includes 24 years in the Big Ten as player, coach, and administrator, is in his second year as the Iowa athletic director. He has been



personally involved in four Big Ten football championships and four Rose Bowl appearances. The personable Elliott, a former star at Michigan, came to Iowa from his alma mater, where he had been associate athletic director for 18 months.

Bump is no stranger to Iowa fans. He was a popular assistant football coach with the Hawkeyes for five years and was instrumental in a Big Ten championship and Rose Bowl victory in 1956.

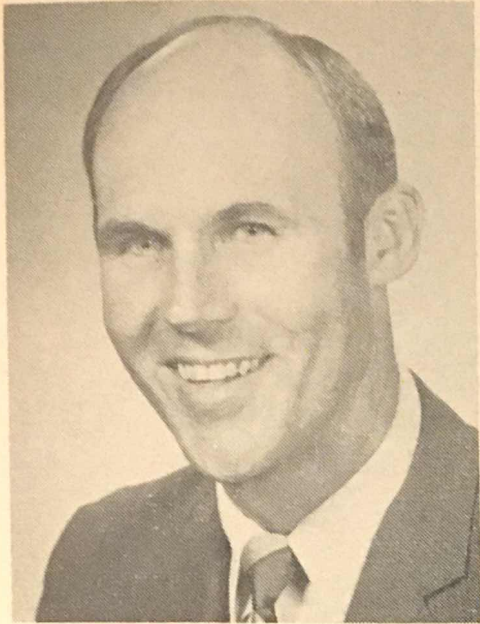
Elliott played three sports at Michigan in 1946-47-48. A brilliant halfback, he topped the Big Ten in scoring in 1947 with 54 points and spurred the Wolverines to Big Ten and Rose Bowl championships. He led his team in pass receiving and averaged more than 5 yards a carry. He earned All-America honors, as did his brother Pete, a Michigan quarterback. Bump also played parts of two seasons (1943-44) as a Marine trainee at Purdue. He was the Big Ten's MVP in 1947.

Bump coached football for 21 years, the last 10 as head coach at Michigan. His tenure there was highlighted by a Big Ten championship and Rose Bowl victory in 1964. His record with the Wolverines was 51-41-2. He served as an assistant coach at Oregon State (1948-51), Iowa (1952-56), and Michigan (1957-58) before he took the head job there.

Elliott is a native of Bloomington, Ill. His father, Dr. J. Norman Elliott, was a physician there and also coached at Illinois Wesleyan and Northwestern. Bump was discharged from the Marines in 1946 and earned his degree at Michigan in 1948. He and his wife, Barbara, have three children: Bill, Bob and Betsy. He was born in Detroit, Jan. 30, 1925.

The Head Coach

DICK SCHULTZ starts his second year as Iowa's basketball coach hoping to reverse last year's 9-15 record. That mark was turned in by a club that was, except for Fred Brown, totally inexperienced and lost nine games by an average margin of three points. It also lost a potentially outstanding junior college transfer, James Speed, to blindness just before the season began.



Schultz has been a member of the Iowa staff since 1960, when he became freshman coach in baseball and basketball. He was named assistant varsity basketball coach in 1962 and associate head coach just prior to getting the head job in April, 1970. He became acting head baseball coach in

1963 and head coach in 1966. His baseball teams had a record of 126-108.

A native of Kellogg, Iowa, Schultz attended Central College, where he won 10 letters in football, basketball and baseball. After graduation in 1950 he turned down an offer from pro football's Los Angeles Dons and instead signed a baseball contract with the St. Louis Browns. He decided to become a coach, however, and never played professionally, although he played and managed for several years in some fast semi-pro baseball leagues in central Iowa.

Dick began his coaching career at Humboldt, Iowa, in 1950 and remained there until he joined the Iowa staff. He was the school's athletic director his final two years there. During his tenure Humboldt won 10 conference titles in baseball and basketball, which he coached, and football.

Active in the Fellowship of Christian Athletes, Dick and his wife, Jackie, have three children: Bob, Bill and Kim. He was born in Grinnell, Iowa, Sept. 5, 1929.

Hawkeye Staff Members

DICK KUCHEN—Varsity Assistant

Kuchen is in his first year as varsity assistant after serving as freshman coach one season. He played basketball at Rider College, where he scored more than 1,000 points and set a school rebounding record. He played amateur basketball in Western Europe for Gulf Oil, then coached AIP College in Pittsburgh to a 20-2 record in 1969. Dick was on the staff at Washington, Mo., prior to coming to Iowa. He is a native of Asbury Park, N.J., and is single. Born 6/22/44.



JOE ROBERTS—Freshman Coach

A co-captain for Ohio State's 1960 NCAA champions, Roberts is in his first year at Iowa. He played professionally four years (for Syracuse of the NBA, Columbus of the Midwest League and Kentucky of the ABA) and then became a recreation consultant in Ohio. He was named the JayCee of the year in Columbus in 1966. A native of Columbus, Joe was on the Western Michigan staff for two years before coming to Iowa. He and his wife, Celia, have three daughters. Born 5/18/36.



FRANCIS (BUS) GRAHAM—Associate Athletic Director

A longtime Iowa City resident, Bus Graham has been handling athletic business matters and ticket sales at Iowa since 1952. Prior to that he was employed for 16 years by a Davenport baking firm and two years by an Iowa City insurance company. He also was a Big Ten football and basketball official for five years before joining the Hawkeye staff. Bus and his wife, Viola, have two daughters. Born 2/23/12.



TOM SPALJ—Physical Therapist

Tom Spalj (pronounced Spile) has been helping Hawkeye athletes recover from various ailments since 1964. His home is Crosby, Minn., where he was a student trainer and developed an interest in treating wounded athletes. He holds a bachelor's degree from St. John's (Minn.) and a physical therapy degree from Iowa. Tom and his wife, Nancy, have two children. Born 12/10/40.



Herky and the Hawkeyes

The University of Iowa borrowed its athletic nickname from the state of Iowa many years ago. The name Hawkeye was originally applied to a hero in a fictional novel, *The Last of the Mohicans*, written by James Fenimore Cooper. Author Cooper had the Delaware Indians bestow the name on a white scout who lived and hunted with them.

In 1838, 12 years after the book was published, people in the territory of Iowa acquired the nickname, chiefly through the efforts of Judge David Rorer of Burlington and James G. Edwards of Ft. Madison. Edwards, editor of the *Ft. Madison Patriot*, moved his paper to Burlington in 1843 and renamed it the *Burlington Hawk-Eye*. The two men continued their campaign to popularize the name and were rewarded when territorial officials gave it their formal approval.



The Hawkeye nickname gained a tangible symbol in 1948 when a cartoon character, later to be named Herky the Hawk, was hatched. The creator was Richard Spencer III, instructor of journalism. The impish hawk was an immediate hit and he acquired a name through a state-wide contest staged by the athletic department. John Franklin, a Belle Plaine alumnus, was the man who suggested Herky.

Since his birth more than 20 years ago, Herky has symbolized Iowa athletics and epitomized University life. He even donned a military uniform during the Korean War and became the insignia of the 124th Fighter Squadron.

During the mid-1950s Herky came to life at a football game as the Iowa mascot with a black leather head and gold felt feathers. Since then Herky has become a familiar figure at Hawkeye athletic events.

Freshman Schedule

Dec. 2 at Iowa State Fr.
Dec. 13 Muscatine JC
Jan. 11 Upper Iowa JV
Jan. 29 Wartburg JV
Feb. 8 Palmer JC

Feb. 12 Creighton Fr.
Feb. 15 Iowa Wesleyan JV
Feb. 23 Drake Fr.
Feb. 29 Kirkwood JC
Mar. 4 at Wisconsin Fr.

The Outlook

Things are looking up for Iowa's basketball team. For one thing Kevin Kunnert has grown an inch and now stands an even seven feet. The 231-pound junior is one of seven returnees who played a lot of basketball for the Hawkeyes last winter. There were, in fact, only two significant losses from Coach Dick Schultz' first Iowa squad.

One was All-America Guard Fred Brown, who scored 1,091 points in his two-year career. Now a Seattle SuperSonic, Brown was almost a one-man show at times last year, averaging 27.6 points, shooting 50 percent from the field and thrilling crowds with his ball-handling magic. Omar Hazley was the other key loss. A steady 6-6 performer, he averaged a little better than six rebounds and six points.

The current Hawkeye team has seven players who started one or more games in 1970-71, three outstanding front-liners off the freshman team, plus a junior college transfer with excellent credentials. That's a total of 11 candidates who figure in the race for five starting positions.

Except for center, where Kunnert's big figure looms large, all spots are up for grabs. It's not likely anyone's going to nudge Kevin out of the pivot. He came on strong toward the end of his rookie season and finished with a 10.4 scoring average and 227 rebounds. Kunnert also had the benefit of the Big Ten summer basketball tour through Australia.

Once the early shakedown was completed last season, forward Ken Grabinski (8.9 average) and guard Gary Lusk (8.2) started virtually all games. Both are now seniors. Other key returnees are forwards Sam Williams (7.8) and Joe Gould (3.3), and guards Lynn Rowat (6.2) and Glenn Angelino (4.4).

Sophomores to watch are Jim Collins, Neil Fegebank and Harold Sullinger. All are in the 6-8 range, and Fegebank and Sullinger were high school All-Americans. Collins, however, made the most progress as a freshman, and all three are strong candidates for starting berths.

Several junior college graduates (including Fred Brown) have reached stardom with the Hawkeyes. Rick Williams is the latest JC prospect. A 6-3 guard, he's very quick and a good marksman (23.4 average at Ft. Dodge) and could be just what the Hawkeyes need to recover from the loss of Fred Brown.

Varsity Roster

No.	Player	Pos.	Yr.	Ht.	Wt.	Hometown
* 3	Joe Gould	F	Jun	6-7	189	New Orleans, La.
* 4	Glenn Angelino	G	Jun.	6-4	181	Allentown, Pa.
**11	Gary Lusk	G	Sen.	5-10	163	Madison, Ill.
*14	Sam Williams	F	Jun.	6-5	200	Demopolis, Ala.
15	Neil Fegebank	F	Soph.	6-7	200	Paullina, Iowa
**24	Ken Grabinski	F	Sen.	6-6	210	Clear Lake, Iowa
25	Reggie Vaughan	G	Soph.	6-4	188	Philadelphia, Pa.
35	Harold Sullinger	F	Soph.	6-8	207	Camden, N.J.
*42	Lynn Rowat	G	Sen.	6-3	185	Des Moines, Iowa
43	Rick Williams	G	Jun.	6-3	156	Cedar Rapids, Iowa
*44	Kevin Kunnert	C	Jun.	7-0	231	Dubuque, Iowa
51	Fred Mims	G	Sen.	6-1	190	Galesburg, Ill.
52	Ken Angersola	F	Jun.	6-7	200	Garfield Hts., Ill.
53	Jim Collins	C	Soph.	6-9	200	Fort Dodge, Iowa

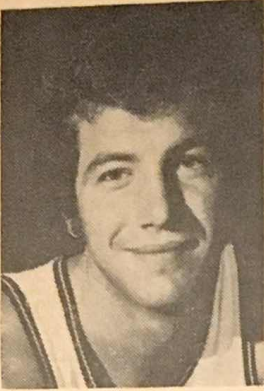
*Letters won

1970-71 Statistics

Player	G	FG	FGA	Pct.	FT	FTA	Pct.	Reb.	PF-D	TP	Ave.	HG
Brown	24	268	535	.501	126	152	.829	111	87-6	662	27.6	37
Kunnert	24	106	220	.482	37	53	.698	227	96-9	249	10.4	28
Grabinski	24	66	162	.407	81	106	.765	138	83-3	213	8.9	20
Lusk	24	74	175	.423	50	61	.820	61	47-0	198	8.2	24
Williams	23	74	194	.381	32	53	.604	96	50-2	180	7.8	28
Hazley	24	58	150	.387	37	53	.698	124	46-0	153	6.4	14
Rowat	21	56	133	.421	18	20	.900	42	17-0	130	6.2	17
Angelino	22	39	104	.375	19	29	.655	39	37-0	97	4.4	12
Gould	15	16	50	.320	18	28	.643	40	25-0	50	3.3	16
Miller	7	2	5	.400	2	6	.333	5	5-0	6	0.8	2
Angersola	7	1	3	.333	3	4	.750	7	3-0	5	0.7	4
Petty	4	0	1	.000	4	5	.800	0	3-0	4	1.0	2
Conway	5	0	3	.000	1	3	.333	2	3-0	1	0.2	1
Mims	2	0	0	.000	0	0	.000	2	0-0	0	0.0	0
Team Rebounds								169				
Iowa Totals		760	1735	.438	428	573	.747	1063	502-20	1948	81.2	
Opp. Totals		754	1595	.473	479	696	.688	1115	432-12	1987	82.8	

Season Highs	Team	Individual
Points	93 vs Wisconsin	37 Brown vs Purdue
Field Goals	39 vs Iowa St. & Ind.	16 Brown vs Michigan
Free Throws	30 vs Hardin-Simmons	10 Brown vs Neb. & Illinois
Rebounds	55 vs Iowa State	22 Kunnert vs Michigan

The Squad

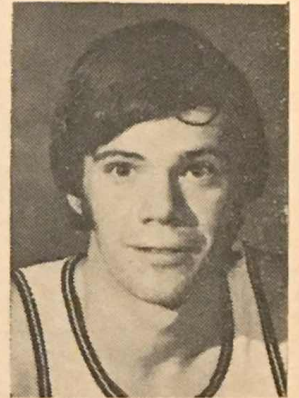


GLENN ANGELINO—G, 6-4, 181, Jun., Allentown, Pa.

COLLEGE—Averaged 4.4 points in 22 games in 1971. Game high of 12 points in season opener against Creighton. Started in several early-season games. Averaged 14.2 as a freshman. **HIGH SCHOOL**—Graduated from William Allen in 1968. Attended Fort Union (Va.) Military Academy in 1969. All-league three times and all-state once at Allen. Basketball captain in 1968. Set school record by making 18 field goals and 43 points in one game. Lettered five times, twice as a baseball shortstop at Allen. First-team all-league selection at Fort Union. **PERSONAL**—Born Nov. 15, 1950, in Allentown. Major: Liberal Arts.

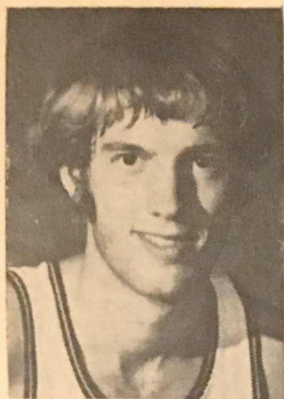
KEN ANGERSOLA—F, 6-7, 200, Jun., Garfield Hts., O.

COLLEGE—Scored 5 points in seven games in 1971. Game high of 4 in season finale against Purdue. Averaged 15.2 and was top field goal shooter with 50.3 percent as a freshman. **HIGH SCHOOL**—Graduated from Manlius prep school near Syracuse, N.Y., in 1969. Set school record with 33 rebounds in a game, and a league mark of 19 rebounds per game in 1968. All-league and team captain in 1968. Helped Manlius to a 25-4 record in 1969. **PERSONAL**—Born Aug. 13, 1950, in Cleveland. Major: Business.



JIM COLLINS—F, 6-9, 200, Soph., Fort Dodge, Ia.

COLLEGE—Averaged 19 points and 11.3 rebounds in 12 games as a freshman. Set scoring marks with 33 against Creighton and a season total of 228 points. Shot 50 percent from the field and had the best free-throwing percentage, almost 75 percent. **HIGH SCHOOL**—Graduated in 1970 from St. Edmond. Set school record by scoring 561 points in a season and averaging 29.7. Second team all-state basketball player in 1970. Lettered five times, three times in basketball and twice in track. **PERSONAL**—Born June 8, 1952, in Fort Dodge. Major: Physical Education.

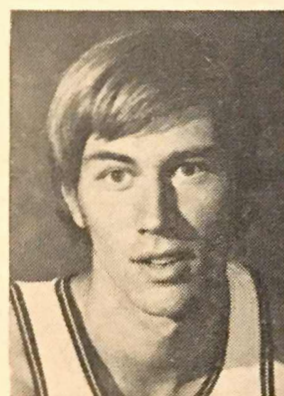
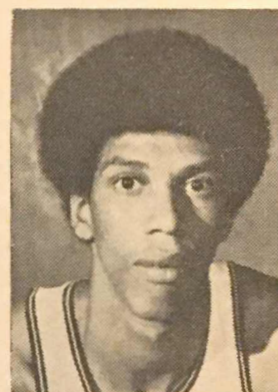


NEIL FEGEBANK—F, 6-7, 200, Soph., Paullina, Ia.

COLLEGE—Scored 174 points in 10 games as a freshman. Game highs of 25 points against St. Ambrose and 19 rebounds against Muscatine. Had 120 rebounds for the season. Was sidelined twice during season with stress fractures. **HIGH SCHOOL**—Graduated in 1970. Led Paulina to three straight class A state basketball titles in 1968-69-70. Captained the 1970 team. First team all-state selection in 1969 and 1970. All-conference baseball player at Paullina 1968 and 1969. Lettered seven times at Paulina, three times in basketball and twice each in baseball and golf. **PERSONAL**—Born Mar. 29, 1952, in Primghar, Ia. Major: Liberal Arts.

JOE GOULD—F, 6-7, 189, Jun., New Orleans, La.

COLLEGE—Scored 50 points and had 40 rebounds in 15 games last winter. Game high of 16 points against Hardin-Simmons. Started two Big Ten games. Averaged 11.5 points and 9.1 rebounds per game as a freshman. **HIGH SCHOOL**—Graduated from George Washington Carver in 1969. Made all-state twice. Had 38 rebounds in one game. Won four letters, one in track. **PERSONAL**—Born May 7, 1951, in New Orleans. Major: Business Administration.

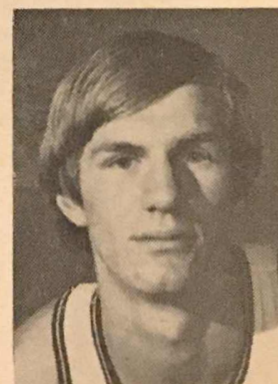


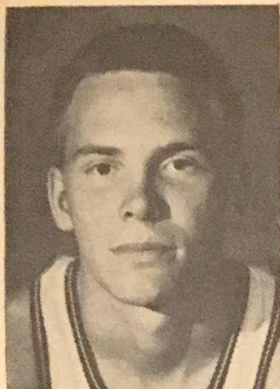
KEN GRABINSKI—F, 6-6, 210, Sen., Clear Lake, Ia.

COLLEGE—Scored 233 points and had 153 rebounds in 38 games for Iowa. Game highs of 20 points against Hardin-Simmons and 14 rebounds against Northwestern last season. Averaged 8.9 points as a starter most of last season and played in every game. Selected to the 1971 Big Ten all-academic team. **HIGH SCHOOL**—Graduated in 1968. All-state twice. Played with conference champions twice. Captain in 1968. Led league in scoring and rebounding as a senior. Earned 10 letters, three in golf and two each in football and baseball. **PERSONAL**—Born Mar. 28, 1950, in Waterloo, Ia. Major: Business.

KEVIN KUNNERT—C, 7-0, 231, Jun., Dubuque, Ia.

COLLEGE—Averaged 10.4 points in 24 games last year and was team's No. 2 scorer. Scored 28 points against Ohio State last year. Started most games and was team's leading rebounder with 227, including 22 against Michigan. Selected for Big Ten team that toured Australia and other countries last summer. **HIGH SCHOOL**—Graduated from Wahlert in 1969. Earned one letter. **PERSONAL**—Born Nov. 11, 1951, in Dubuque. One of 10 children. Major: Liberal Arts.



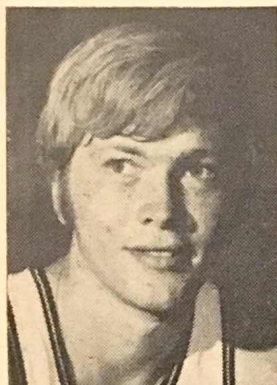
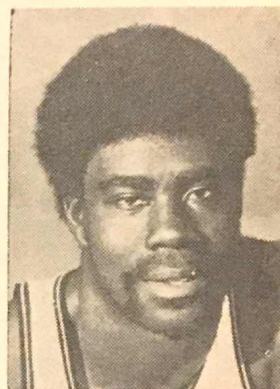


GARY LUSK—G, 5-10, 163, Sen., Madison, Ill.

COLLEGE—Scored 206 points in 33 games at Iowa. Game highs of 24 points against Wisconsin and Indiana and nine rebounds against Ohio State last season. Emerged as a starter early last season and averaged 8.2 points. Selected to the 1971 Big Ten all-academic team. Averaged 24.7 as a freshman. **HIGH SCHOOL**—Graduated in 1968. Played with two conference champions. Made all-league twice and all-state once. Set school career scoring record. Lettered three times. **PERSONAL**—Born Sept. 4, 1949, in St. Louis, Mo. Major: Physical Education.

FRED MIMS—G, 6-1, 190, Sen., Galesburg, Ill.

COLLEGE—Failed to score in only two appearances last season. Came to Iowa as a walk-on, then led the baseball team in hitting with .383 average last spring. A center-fielder, he also had nine home runs and was named to the all-Big Ten team. Was further honored by being selected to play for the U.S. baseball team in the 1971 Pan American Games in Colombia. Came to Iowa from Spoon River JC in Canton, Ill. **PERSONAL**—Born Feb. 14, 1950, in Garland County, Ala. Major: Liberal Arts.

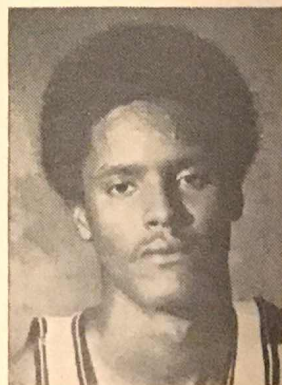


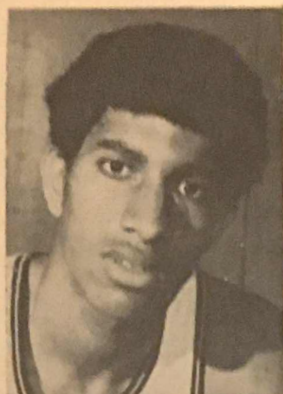
LYNN ROWAT—F-G, 6-3, 185, Sen., Des Moines, Ia.

COLLEGE—Scored 143 points in 27 games at Iowa. Game highs of 17 points against Northwestern and seven rebounds against Michigan State in 1971. Long-range shooting was key in Iowa's victory over Illinois last season. Best freethrow average on the team, making 90 percent. Averaged 23.7 as a freshman. **HIGH SCHOOL**—Graduated from East in 1968. All-state twice. Captain in 1968. Set school career scoring record. Earned six letters, three in baseball. Played on three conference baseball champions. **PERSONAL**—Born Dec. 25, 1949, in Des Moines. Plays clarinet. Sports editor of high school newspaper. Major: Liberal Arts.

HAROLD SULLINGER—F, 6-8, 207, Soph., Camden, N.J.

COLLEGE—Scored 113 points in five games before ineligibility sidelined him in freshman year. High game of 29 against Grandview. Averaged 18 rebounds. **HIGH SCHOOL**—Graduated in 1970 from Woodrow Wilson. Led Wilson to sectional championship in 1969 and state title in 1970. First-team all state in 1970. State's leading rebounder in 1970, averaging 27 per game. Captain in 1970. Set Wilson records for most points (495) and most rebounds (733) in a season. **PERSONAL**—Born Oct. 17, 1952, in Columbus, Ohio. Major: Liberal Arts.



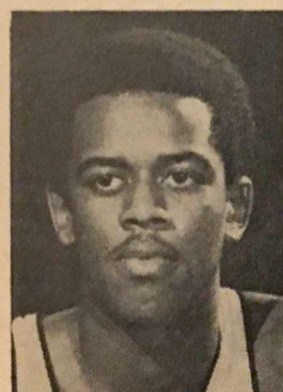
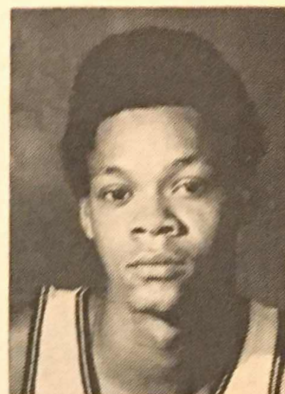


REGGIE VAUGHAN—G, 6-4, 188, Soph., Philidelphia, Pa.

COLLEGE—Averaged 13.6 in 12 games as a freshman. Game highs of 19 points against Iowa State and Creighton, and 11 rebounds against Wisconsin. **HIGH SCHOOL**—Graduated in 1970 from Ben Franklin. Made all-city and team captain in senior year. Also lettered in football and baseball. **PERSONAL**—Born Nov. 24, 1952, in Richmond, Va. Plays trumpet and cornet. President of National Honor Society. Major: Liberal Arts.

RICK WILLIAMS—G, 6-3, 156, Jun., Cedar Rapids, Ia.

COLLEGE—Attended Fort Dodge Junior College (Iowa) in 1969-71. Named to the regional all-JC team. Scored 908 points in two years. Averaged 23.4 for 25 games last year. Game high of 36 against Burlington. Helped Fort Dodge defeat the national JC champions (Ellsworth) twice last winter. **HIGH SCHOOL**—Graduated in 1969 from Washington. Helped Washington to win Class AA state championship in 1969. **PERSONAL**—Born Feb. 19, 1951, in Chicago, Ill. Major: Liberal Arts.



SAM WILLIAMS—F, 6-5, 200, Jun., Demopolis, Ala.

COLLEGE—Scored 180 points in 23 games last season. Game high of 28 against Wyoming, including game-winning three-point play at the gun. Pulled down 96 rebounds with a game high of 12 against Northwestern. Averaged 14.8 points as a freshman. Started a few games last season. **HIGH SCHOOL**—Graduated from U.S. Jones in 1969. An all-league and all-state selection. Team's MVP in 1969. Led Jones to state runner-up spot in 1969. Six letters, including three in football. **PERSONAL**—Born Aug. 4, 1951, in Demopolis. Plays trombone and tuba. Major: Liberal Arts.

Outlook at a Glance

Lettermen Returning—Kevin Kunnert (249 points), Ken Grabinski (213), Gary Lusk (198), Sam Williams (180), Lynn Rowat (130), Glenn Angelino (97), Joe Gould (50).

Lettermen Lost—Fred Brown (662 points), Omar Hazley (153).

Top Newcomers—Center Jim Collins; forwards Harold Sullinger and Neil Fegebank; guard Rick Williams.

Individual Game Scoring

	Angelino	Angersola	Brown	Conway	Could	Grabinski	Hazley	Kunnert	Lusk	Miller	Mims	Petty	Rowat	Williams	IOWA TOTALS
Creighton	12		32		2	6	2	3	0	2			2	12	73
Nebraska	6		28			7	1	15	0				8	6	71
Ashland	5	1	15	0	7	10	5	3	2	1		2	6	20	82
Drake	8		32		2	3	0	9	5				4	7	70
Bowl. Green	8		33		2	14	6	12	4				7	3	89
Cincinnati	11		24		0	5	3	9	6				4	8	70
Hard.-Sim.	4	0	17	0	16	20	7	8	5	2		2	2	7	90
Iowa State	8	0	25	0	0	11	6	13	2	0	0	0	1	21	87
Wyoming	2		29			8	6	2	4	0			8	28	87
Ohio State	6	0	35		7	8	3	1	2				8	6	76
Mich. State	6		30		0	8	0	18	4				15		81
Cincinnati	0		23		0	14	7	3	12				2	8	69
Northwestern	6	0	35			6	6	4	17				4	9	87
Illinois	0		36			8	11	11	6				10	10	92
Wisconsin	0		28			12	12	11	24				2	4	93
Indiana			23			10	9	16	24				2	0	84
Minnesota	0		31			17	7	2	13				6	0	76
Purdue	2		37			7	14	0	8					17	85
Ohio State	2		24			1	3	28	12					1	71
Wisconsin	0		27		7	11	10	16	12					0	83
Northwestern	3	0	24	0	2	8	9	6	9	0	0	0	17	0	78
Indiana	0		26		2	9	8	21	5				11	6	88
Michigan			35		2	8	12	14	11				0	0	82
Purdue	8	4	13	1	1	2	6	19	11	1			11	7	84
TOTALS	97	5	662	1	50	213	153	249	198	6	0	4	130	180	1948

Game Comparisons

Iowa						Opponent						
FG	Pct.	FT	Rb	PF	TP	Game	FG	Pct.	FT	Rb	PF	TP
29-62	.468	15-24	34	29	73	Creighton	35-70	.500	28-38	53	19	98
26-67	.388	19-23	39	20	71	Nebraska	29-44	.659	15-24	30	17	73
29-54	.537	24-30	45	18	82	Ashland	19-52	.365	18-27	28	21	56
28-63	.444	14-23	49	18	70	Drake	29-64	.453	14-21	37	16	72
35-66	.530	19-29	38	21	89	Bowling Gr.	28-62	.452	22-30	45	22	78
28-69	.406	14-20	44	25	70	Cincinnati	27-69	.391	19-32	58	15	73
30-72	.417	30-38	51	27	90	H.-Simmons	26-61	.426	25-39	48	25	77
39-82	.476	9-17	55	16	87	Iowa State	26-66	.394	16-22	42	12	68
32-69	.464	23-30	45	17	87	Wyoming	33-64	.516	18-23	35	21	84
30-87	.345	16-21	44	21	76	Ohio State	36-68	.529	25-30	55	16	97
36-70	.514	9-15	40	17	81	Mich. State	36-63	.571	12-23	38	11	84
27-54	.500	15-20	30	22	69	Cincinnati	27-56	.482	19-29	41	18	73
36-80	.450	15-18	45	26	87	Northwestern	25-63	.397	35-42	47	16	85
32-74	.432	28-30	48	22	92	Illinois	34-72	.472	16-28	46	20	84
37-87	.425	19-26	50	28	93	Wisconsin	32-83	.386	27-43	74	22	91
33-72	.458	18-21	35	19	84	Indiana	32-64	.500	22-30	47	17	86
28-73	.384	20-24	41	16	76	Minnesota	38-77	.494	12-18	53	16	88
33-65	.508	19-22	39	21	85	Purdue	34-67	.507	19-28	38	19	87
30-72	.417	11-16	43	17	71	Ohio State	30-67	.448	20-25	46	14	80
29-76	.382	25-38	53	26	83	Wisconsin	30-58	.517	29-36	42	26	89
29-66	.439	20-28	56	21	78	Northwestern	24-72	.333	16-30	51	23	64
39-88	.443	10-15	42	19	88	Indiana	44-79	.557	16-24	55	13	104
37-87	.425	8-10	49	13	82	Michigan	36-77	.468	14-20	50	8	86
28-80	.350	28-35	48	23	84	Purdue	44-77	.571	22-34	56	25	110

1,000-Point Club

Fred Brown became the tenth member of Iowa's 1,000-point club with a two-year total of 1,091 points in 48 games. He's the third junior college player (Sam Williams in 1968 and John Johnson in 1970) to join the group. Don Nelson, now a Boston Celtic, has a comfortable first-place total of 1,522 career points. Bill Logan (Keokuk) and Dave Gunther (LeMars) are the only native Iowans in the club.

Points Player—(scoring by years)

1,522	Don Nelson, c (380 in 1960, 570 in 1961, 572 in 1962)
1,188	Bill Logan, c (315 in 1954, 413 in 1955, 460 in 1956)
1,188	Dave Gunther, f (271 in 1957, 435 in 1958, 482 in 1959)
1,176	Sam Williams, f (544 in 1967, 632 in 1968)
1,172	John Johnson, f (473 in 1969, 699 in 1970)
1,168	Chad Calabria, g (348 in 1968, 341 in 1969, 479 in 1970)
1,094	Charles Darling, c (175 in 1950, 358 in 1951, 561 in 1952)
1,091	Fred Brown, g (427 in 1970, 662 in 1971)
1,054	Carl Cain, f (283 in 1954, 360 in 1955, 411 in 1956)
1,025	George Peeples, c (188 in 1964, 409 in 1965, 428 in 1966)

Team Records

Most Points—

Half—75, vs. Notre Dame, 3/14/70.

Game—121, vs. Notre Dame, 3/14/70.

Season—2,467 in 1970, 25 games.

Two Teams, Game—227 (Iowa 121, Notre Dame 106), 3/14/70.

Most Field Goals—

Game—52, vs. Notre Dame, 3/14/70.

Season—959 in 1970, 25 games.

Most Free Throws—

Game—41, vs. Drake, 12/22/69.

Season—573 in 1969, 24 games.

Consecutive, game—28 vs. Drake, 12/22/69.

Most Rebounds—

Game—76, vs. Ohio State, 2/14/55.

Season—1,227 in 1955, 26 games.

Best Field Goal Percentage—

Game—.634, vs. Michigan (45 of 71), 1/6/70.

Season—.523 in 1970.

Best Free Throw Percentage—

Game—.953, vs. Drake (41 of 43), 12/22/69.

Season—.780 in 1970.

Most Valuable Hawkeyes

1946—Herb Wilkinson, g	1959—Dave Gunther, f
1947—Murray Wier, f	1960—Don Nelson, c
*1948—Murray Wier, f	1961—Don Nelson, c-f
1949—Charlie Mason, f	1962—Don Nelson, f
1950—Franklin Calsbeek, f	1963—Jerry Messick, c
1951—Franklin Calsbeek, f	1964—Jimmy Rodgers, g
*1952—Charles Darling, c	1965—Jimmy Rodgers, g
1953—Herbert Thompson, f	1966—Dennis Pauling, g
1954—Carl Cain, f	1967—Gerry Jones, f
1955—Bill Seaberg, g	*1968—Sam Williams, f
1956—Carl Cain, f	1969—John Johnson, f
1957—Dave Gunther, f	1970—John Johnson, f
1958—Dave Gunther, f	1971—Fred Brown, g

**Won Chicago Tribune silver basketball awarded to most valuable player in Big Ten.*

Individual Records

Most Points—

Game—49, John Johnson vs. Northwestern, 2/24/70.

Season—699, John Johnson, 1970, 25 games, avg. 27.9.

Career—1,522, Don Nelson, 1960-62, 72 games, avg. 21.1.

Most Field Goals—

Game—20, John Johnson vs. Northwestern, 2/24/70.

Season—289, John Johnson, 1970, 25 games.

Career—530, Don Nelson, 1960-62, 72 games.

Most Free Throws—

Game—21, Don Nelson vs. Indiana, 2/17/62.

Consecutive, game—13, Glenn Vidnovic vs. Purdue, 2/4/69.

Season—194, Sam Williams, 1968, 25 games.

Consecutive, season—33, Ben McGilmer through 8 games, 1969.

Career—462, Don Nelson, 1960-62, 72 games.

Most Rebounds—

Game—30, Charles Darling vs. Wisconsin, 3/3/52.

Season—387, Charles Darling, 1951, 22 games.

Career—784, Don Nelson, 1960-62, 72 games.

Best Field Goal Percentage—

Game—.909, Jim McConnell (10 of 11), vs. Minnesota, 1/12/57.

Season—.569, John Johnson (289 of 508), 1970, 25 games.

Career—.543, John Johnson (463 of 852) 1969-70, 49 games.

Best Free Throw Percentage—

Game—13 of 13, Glenn Vidnovic vs. Purdue, 2/4/69.

12 of 12, Sam Williams vs. Ohio State, 3/4/67.

11 of 11, Glenn Vidnovic vs. Creighton, 12/21/68.

11 of 11, Sam Williams vs. Northwestern, 1/21/67.

10 of 10, Charles Darling vs. Minnesota, 1/22/51.

10 of 10, Dave Gunther vs. Ohio State, 1/4/57.

10 of 10, George Peeples vs. Minnesota, 3/9/65.

10 of 10, Chad Calabria vs. Michigan State, 1/4/69.

10 of 10, Glenn Vidnovic vs. Drake, 12/22/69.

10 of 10, Glenn Vidnovic vs. Notre Dame, 3/14/70.

10 of 10, Fred Brown vs. Nebraska, 12/5/70.

10 of 10, Fred Brown vs. Illinois, 2/2/71.

Season—.875, Glenn Vidnovic (133 of 152), 1970, 25 games.

Career—.856, Glenn Vidnovic (339 of 396) 1968-70, 59 games.

Scoring Leaders by Games

Pts.	Player	Date	Opponent	Score
49	John Johnson, f	2/24/70*	Northwestern	W 116-97
46	John Johnson, f	11/30/68*	UW-Milwaukee	W 116-80
43	Dick Ives, f	2/5/44*	Chicago	W 103-31
39	Don Nelson, f	1/6/62	Wisconsin	W 79-71
	Sam Williams, f	1/21/67	Northwestern	L 88-90
38	Chris Pervall, g	3/6/65*	Illinois	W 94-72
	John Johnson, f	2/21/70	Ohio State	W 97-89
37	Dick Ives, f	12/15/43*	Western Illinois	W 82-34
	Dave Gunther, f	2/21/59*	Ohio State	W 91-79
	Don Nelson, f	2/17/62	Indiana	L 69-72
	Sam Williams, f	12/23/67	Stanford	L 86-87
	John Johnson, f	3/3/70*	Ohio State	W 113-92
	Fred Brown, g	2/20/71*	Purdue	L 85-87
36	Bill Logan, f	3/22/56	Temple	W 83-76
	Dave Gunther, f	12/27/58*	Wyoming	W 82-74
	Don Nelson, f	1/8/62*	Northwestern	W 74-69
	John Johnson, f	2/14/70*	Michigan State	W 103-77
	Fred Brown, g	2/2/71*	Illinois	W 92-84
35	Dave Gunther, f	12/20/58*	Washington	L 68-81
	Don Nelson, f	3/10/62*	Wisconsin	W 81-64
	Sam Williams, f	2/6/67*	Illinois	W 96-89
	Fred Brown, g	1/9/71*	Ohio State	L 76-97
	Fred Brown, g	1/30/71	Northwestern	W 87-85
	Fred Brown, g	3/9/71*	Michigan	L 82-86
34	Murray Wier, f	2/9/48*	Illinois	W 70-61
	Charles Darling, c	3/3/52*	Wisconsin	L 75-78
	Charles Darling, c	3/19/52*	Minnesota	W 75-59
	Carl Cain, f	3/17/56*	Kentucky	W 89-77
	Dave Gunther, f	12/29/58	Oregon State	L 71-72
	Don Nelson, c-f	12/19/60	Arizona	W 105-64
	Don Nelson, c-f	1/14/61	Michigan State	W 86-72
	Sam Williams, f	3/4/68*	Minnesota	W 91-72
	John Johnson, f	1/6/70	Michigan	W 107-99
33	Don Nelson, c-f	12/1/60	Evansville	W 86-84
	Sam Williams, f	1/23/68	Michigan State	W 76-71
	John Johnson, f	3/4/69	Minnesota	L 65-71
	John Johnson, f	12/18/69	Cincinnati	L 105-114
	John Johnson, f	12/30/69	Hawaii	W 111-60
	John Johnson, f	2/3/70*	Minnesota	W 90-77
	John Johnson, f	2/7/70	Indiana	W 104-89
	Fred Brown, g	12/14/70	Bowling Green	W 89-78

*Home games

The 500-Point Club

Player	Year	GP	FGM	FGA	PCT.	FTM	FTA	PCT.	TP	AVG.
John Johnson	1970	25	289	508	.569	121	161	.752	699	27.9
Fred Brown	1971	24	268	535	.501	126	152	.829	662	27.6
Sam Williams	1968	25	219	475	.461	194	265	.732	632	25.3
Don Nelson	1962	24	193	348	.554	186	264	.704	572	23.8
Don Nelson	1961	24	197	377	.522	176	268	.656	570	23.7
Charles Darling	1952	22	204	489	.417	153	218	.702	561	25.5
Sam Williams	1967	24	183	387	.473	178	232	.767	544	22.6
Chris Pervall	1965	24	198	433	.457	111	169	.657	507	21.1

The 400-Point Club

Dave Gunther	1959	22	180	433	.415	122	167	.730	482	21.9
Chad Calabria	1970	25	181	330	.548	117	146	.801	479	19.1
John Johnson	1969	24	174	344	.506	125	186	.672	473	19.7
Bill Logan	1956	26	175	420	.440	110	179	.615	460	17.7
Chris Pervall	1966	24	164	387	.424	130	173	.751	458	19.1
Gerry Jones	1967	24	169	367	.461	110	154	.714	448	18.6
Dave Gunther	1958	22	169	377	.448	97	141	.688	435	19.8
Glenn Vidnovic	1970	25	150	278	.540	133	152	.875	433	17.3
Fred Brown	1970	24	180	360	.500	69	86	.802	429	17.9
George Peeples	1966	24	171	332	.515	86	143	.601	428	17.8
Bill Logan	1955	26	155	387	.400	103	157	.657	413	15.9
Carl Cain	1956	26	165	403	.409	81	112	.723	411	15.8
George Peeples	1965	24	156	305	.511	97	157	.618	409	17.0
Tom Chapman	1967	24	144	274	.526	114	131	.870	402	16.8

The 300-Point Club

Murray Wier	1948	19	152	429	.354	95	136	.698	399	21.0
Don Nelson	1960	24	140	320	.437	100	155	.645	380	15.8
Glenn Vidnovic	1969	24	107	209	.512	163	189	.862	377	15.7
Dave Roach	1964	23	145	366	.397	77	102	.755	367	15.9
Bill Seaberg	1956	26	126	331	.381	110	141	.780	362	13.9
Carl Cain	1955	26	133	333	.399	94	140	.671	360	13.8
Charles Darling	1951	22	139	376	.372	80	120	.667	358	16.3
Chad Calabria	1968	25	138	324	.425	72	108	.667	348	13.9
Chad Calabria	1969	24	125	283	.442	91	117	.778	341	14.2
Bill Seaberg	1955	26	124	293	.423	92	120	.766	340	13.0
Frank Calsbeek	1951	22	122	357	.342	95	154	.617	339	15.4
Gerry Jones	1965	24	140	323	.433	57	90	.633	337	14.0
Frank Calsbeek	1950	22	127	372	.341	79	130	.608	333	15.1
Dick Ives	1944	18	143	—	—	41	68	.603	327	18.1
Deacon Davis	1953	22	97	324	.299	133	207	.642	327	14.9
Bill Logan	1954	22	116	299	.387	83	126	.659	315	14.3

Scoring Leaders by Years

All Games

1939—Ben Stephens, f	215
1940—Vic Siegel, f	189
1941—Vic Siegel, f	194
1942—Tom Chapman, f	245
1943—Ben Trickey, f	229
1944—Dick Ives, f	327
1945—Dick Ives, f	217
1946—Dick Ives, f	187
1947—Murray Wier, f	272
1948—Murray Wier, f	399
1949—Charlie Mason, f	146
1950—Frank Calsbeek, f	333
1951—Charles Darling, c	358
1952—Charles Darling, c	561
1953—McKinley Davis, f	327
1954—Bill Logan, c	315
1955—Bill Logan, c	413
1956—Bill Logan, f	460
1957—Dave Gunther, f	271
1958—Dave Gunther, f	435
1959—Dave Gunther, f	482
1960—Don Nelson, c	380
1961—Don Nelson, c-f	570
1962—Don Nelson, f	572
1963—Dave Roach, f	289
1964—Dave Roach, f	367
1965—Chris Pervall, g	507
1966—Chris Pervall, g	458
1967—Sam Williams, f	544
1968—Sam Williams, f	632
1969—John Johnson, f	473
1970—John Johnson, f	699
1971—Fred Brown, g	662

Big Ten

Ben Stephens, f	135
Vic Siegel, f	114
Vic Siegel, f	125
Tom Chapman, f	187
Ben Trickey, f	161
Dick Ives, f	208
Clayton Wilkinson, c	134
Dick Ives, f	119
Murray Wier, f	173
Murray Wier, f	272
Charlie Mason, f	123
Frank Calsbeek, f	175
Frank Calsbeek, f	222
Charles Darling, c	364
McKinley Davis, f	268
Bill Logan, c	203
Bill Logan, c	233
Bill Logan, f	263
Dave Gunther, f	179
Dave Gunther, f	291
Dave Gunther, f	280
Don Nelson, c	205
Don Nelson, c-f	321
Don Nelson, f	377
Dave Roach, f	253
Jimmy Rodgers, g	205
Chris Pervall, g	301
Chris Pervall, g	266
Sam Williams, f	353
Sam Williams, f	388
John Johnson, f	255
John Johnson, f	445
Fred Brown, g	404

All-Big Ten Hawkeyes

First-Team Selections

1939—Ben Stephens, f	1956—Carl Cain, f
1944—Dave Danner, f	1959—Dave Gunther, f
1945, '46, '47—Herb Wilkinson, g	1961, '62—Don Nelson, c
1945—Clayton Wilkinson, c	1967, '68—Sam Williams, f
1948—Murray Wier, f	1970—John Johnson, f
1952—Charles Darling, c	1971—Fred Brown, g
1955, '56—Bill Logan, c	

Darling and Wier are members of the all-time All-Big Ten team.

All-America Hawkeyes

All-America First Team

- 1945—Dick Ives, f, Argosy Magazine (coaches, writers)
Herb Wilkinson, g, Helms Foundation
- 1948—Murray Wier, f, AP, Helms, Sports Week, Curt Gowdy, and broad-
casters
- 1952—Charles Darling, c, AP, Helms, UP, INS, Look (coaches, writers),
Colliers'
- 1956—Carl Cain, f, Converse-Taylor
- 1968—Sam Williams, f, Helms
- 1970—John Johnson, f, Helms, Converse, Basketball News
- 1971—Fred Brown, g, Basketball Weekly, Helms, Basketball News

All-America Second Team

- 1934—Ben Selzer, g, Converse-Taylor, Literary Digest
- 1944—Dave Danner, f, Sporting News
- 1945—Dick Ives, f, Converse-Taylor
Herb Wilkinson, g, Sporting News
- 1946—Herb Wilkinson, g, Sporting News, Helms
- 1947—Herb Wilkinson, g, Helms
- 1948—Murray Wier, f, True Magazine (coaches, writers)
- 1952—Charles Darling, c, Converse-Taylor, Athletic Publications
- 1956—Bill Logan, c, Helms, Converse-Taylor
- 1961—Don Nelson, c, Converse-Taylor
- 1962—Don Nelson, c, Converse-Taylor
- 1968—Sam Williams, f, Converse-Taylor
- 1970—John Johnson, f, Converse
- 1971—Fred Brown, g, Sporting News, Converse

All-America Third Team

- 1944—Dick Ives, f, Pic (coaches, writers), Converse-Taylor
- 1945—Herb Wilkinson, g, Argosy Magazine
- 1946—Dick Ives, f, True Magazine (coaches, writers)
- 1948—Murray Wier, f, Converse-Taylor
- 1952—Bob Clifton, g, Look Magazine
- 1955—Bill Seaberg, g, Helms
- 1962—Don Nelson, c, Helms, AP, UP (coaches)
- 1968—Sam Williams, f, AP
- 1970—John Johnson, f, AP, UPI
- 1971—Fred Brown, g, AP

Holiday Tournament Appearances

- 1956—**Dixie Classic at Chapel Hill, N.C.** (finished seventh) lost to North Carolina State 70-84, lost to DePaul 72-73 (ot), beat West Virginia 79-76.
- 1957—**Queen City Tournament at Buffalo, N.Y.** (champions) beat Cornell U. 73-68, beat Syracuse 58-52.
- 1958—**Far West Classic at Corvallis, Ore.** (finished second) beat Wyoming 82-74, lost to Oregon 71-72.
- 1959—**Holiday Festival at New York City** (finished second) beat St. John's 91-84, beat N.Y.U. 80-75, lost to Cincinnati 83-96.
- 1960—**Los Angeles Classic at Los Angeles, Cal.** (champions) beat California 83-80 (4 ot), beat Southern Cal. 70-62, beat UCLA 71-65.
- 1961—**Quaker City Tournament at Philadelphia, Pa.** (finished second) beat Penn State 67-48, beat Pennsylvania 72-64, lost to Villanova 56-69.
- 1962—**Kentucky Invitational at Lexington, Ky.** (finished fourth) lost to Kentucky 69-94, lost to Oregon State 55-61.
Far West Classic at Portland, Ore. (finished second) beat Arizona 57-56, beat Oregon 62-48, lost to Oregon State 57-64.
- 1963—**Far West Classic at Portland, Ore.** (finished seventh) lost to Colorado State 56-61, lost to Louisiana State 81-92, beat Washington State 74-66.
- 1964—**Los Angeles Classic at Los Angeles, Cal.** (finished third) beat Southern Cal. 71-65, lost to Utah 88-92, beat Minnesota 76-74.
- 1965—**Sun Bowl Tournament at El Paso, Tex.** (finished second) beat Arkansas 77-75, lost to Texas Western 68-86.
- 1967—**Los Angeles Classic at Los Angeles, Cal.** (finished third) beat Tennessee 64-59 (ot), lost to Wyoming 87-94 (2 ot), beat St. Louis 80-77 (ot).
- 1968—**Sugar Bowl Tournament at New Orleans, La.** (finished second) beat Houston 95-87, lost to Duke 82-85.
- 1969—**Rainbow Classic at Honolulu, Hawaii** (finished seventh) lost to St. John's 55-57, beat Hawaii 111-60.

100-Point Games

121 Notre Dame .. 106 (1970-A)	105 Arizona 64 (1961-H)
119 Wisconsin 100 (1970-H)	105 Cincinnati 114 (1970-A)
116 UW-Milwaukee 80 (1969-H)	104 Indiana 89 (1970-A)
116 Northwestern .. 97 (1970-H)	103 Chicago 31 (1944-H)
115 Northwestern .. 101 (1970-A)	103 Creighton 77 (1966-H)
113 Ohio State 92 (1970-H)	103 Michigan State 77 (1970-H)
111 Michigan State 68 (1965-H)	103 Jacksonville ... 104 (1970-A)
111 Pepperdine 50 (1966-H)	101 Western Illinois 23 (1945-H)
111 Hawaii 60 (1970-A)	101 Purdue 85 (1965-A)
108 Purdue 107 (1970-A)	101 Drake 78 (1970-H)
107 Detroit 73 (1966-A)	100 Indiana 93 (1970-H)
107 Michigan 99 (1970-A)	100 Creighton 73 (1969-H)
106 North Dakota .. 65 (1961-H)	

Hawkeyes on Television

(Big Ten Network)

1955—Northwestern . . . L	73-93	1964—Illinois L	70-87*
Purdue W	76-67*	1965—Michigan State W	111-68*
Michigan W	96-84	1966—Michigan State W	90-76*
1956—Nebraska W	60-51*	Ohio State W	86-80
Michigan W	78-67	1967—Northwestern . . L	88-90
Illinois W	96-72*	Ohio State W	73-72
1957—Indiana L	66-82*	Indiana W	75-74#
Wisconsin L	59-60*	1968—Ohio State . . . W	74-72*#
1958—Oregon State W	77-67*#	Illinois L	63-66
Minnesota W	73-71	Ohio State L	81-85
1959—Texas Tech . . . W	75-73*	1969—Minnesota . . . W	89-68*
Northwestern . . . L	96-99*#	Ohio State L	81-88
1960—Purdue W	63-54*	1970—Indiana W	104-89
Michigan State L	80-90	Northwestern . . W	115-101
1961—Minnesota . . . W	71-46*	1971—Northwestern . W	87-85
1962—Wisconsin L	79-91	Purdue L	85-87*
Minnesota W	65-63*		
1963—Minnesota L	58-83		
Ohio State W	81-74*		

*at Iowa City

#overtime

NCAA Tournament Appearances

- 1955—Midwest Regional at Evanston, Ill. (champion) beat Penn State 82-53, beat Marquette 86-81.
National Finals at Kansas City, Mo. (finished fourth) lost to LaSalle 73-76, lost to Colorado 54-75.
- 1956—Midwest Regional at Iowa City, Iowa (champion) beat Morehead (Ky.) State 97-83, beat Kentucky 89-77.
National Finals at Evanston, Ill. (second) beat Temple 83-76, lost to San Francisco 71-83.
- 1970—Midwest Regional at Columbus, O. (third) lost to Jacksonville (Fla.) 103-104, beat Notre Dame 121-106.

Chicago Stadium Appearances

1961 Cincinnati L	60-77	1967 Loyola L	87-98
1963 Loyola L	68-86	Cincinnati W	78-69
1964 Loyola L	71-85	1969 Davidson W	76-61
1965 UCLA W	87-82	1971 Cincinnati L	69-73
1966 Detroit W	107-73		

All-Time Opponents

School, first meeting	W	L	School, first meeting	W	L
Arizona, 1958	3	0	Los Angeles State, 1962	1	0
Arkansas, 1966	1	0	Louisiana State, 1964	0	1
Ashland (O.), 1971	1	0	Luther, 1908	3	0
Augustana (Ill.), 1902	8	2	Marquette, 1924	8	5
Bowling Green, 1968	2	0	Miami (O.), 1958	2	0
Bradley, 1930	3	3	Michigan, 1921	31	37
Butler, 1924	5	6	Michigan State, 1938	23	16
California, 1952	4	3	Milliken, 1921	4	2
Cal Poly, 1969	1	0	Minnesota, 1902	45	65
Carleton, 1911	10	6	Minnesota Aggies, 1902	1	1
Carnegie Tech, 1950	1	0	Missouri, 1908	5	2
C.R. YMCA, 1908	2	0	Monmouth (Ill.), 1930	4	1
Central, Ill., YMCA, 1906	0	1	Montana State, 1947	1	0
Chicago, 1905	33	17	Morehead St., 1956	1	0
Cincinnati, 1960	1	5	Nebraska, 1907	9	7
Clemson, 1963	1	0	Nevada, 1962	1	0
Coe, 1905	15	2	New York Univ., 1960	1	0
Colorado, 1954	2	3	N. Carolina State, 1957	0	1
Colorado College, 1949	2	0	North Dakota, 1924	7	0
Colorado State, 1954	1	1	N. Dakota State, 1933	0	1
Concordia (Mo.), 1930	0	1	Northern Iowa, 1906	14	1
Cornell (Iowa), 1911	16	4	Northern Mich., 1969	1	0
Cornell (N.Y.), 1958	1	0	Northwestern, 1905	51	39
Creighton, 1922	12	8	Notre Dame, 1923	5	7
Davidson, 1969	1	0	Ohio State, 1915	35	35
Denver, 1937	6	0	Ohio Univ., 1963	0	1
DePaul, 1939	1	1	Oklahoma, 1952	2	2
DePauw, 1940	4	0	Oklahoma State, 1930	1	0
D.M. College, 1903	1	0	Omaha, 1949	1	0
Des Moines YMCA, 1902	3	5	Oregon, 1950	5	0
Detroit, 1941	3	0	Oregon State, 1958	1	3
Drake, 1909	18	5	Ottumwa, 1913	0	1
Dubuque YMCA, 1902	1	0	Pennsylvania, 1955	1	1
Duke, 1969	0	1	Penn State, 1955	2	0
Duquesne, 1930	2	0	Pepperdine, 1965	1	0
Evansville, 1960	5	2	Pittsburgh, 1928	1	5
Grinnell, 1902	18	19	Princeton, 1948	2	0
Hamline, 1935	1	0	Providence, 1965	0	1
Hardin-Simmons, 1971	1	0	Purdue, 1909	40	40
Harvard, 1948	1	0	Regis, 1948	1	0
Haskel Indians, 1909	1	0	Ripon, 1943	1	0
Hawaii, 1970	1	0	Rockford, 1921	1	0
Highland Park, 1903	4	1	Sacred Heart, 1912	1	0
Houston, 1969	1	0	St. Ambrose, 1933	2	0
Illinois, 1908	32	39	St. Francis (Pa.), 1970	1	0
Ill. Wesleyan, 1921	0	1	St. John's (N.Y.), 1960	1	1
Indiana, 1909	40	52	St. Joseph's, 1912	0	1
Indiana State, 1941	1	0	St. Louis, 1926	7	6
Iowa Nat. Guard, 1905	2	1	St. Mary's (Cal.), 1947	3	0
Iowa State, 1910	19	4	San Francisco, 1956	0	1
Iowa Wesleyan, 1912	3	0	Simpson, 1913	0	1
Ithaca, 1949	1	0	South Dakota, 1929	10	0
Jacksonville, 1970	0	1	S. Dakota State, 1930	7	1
Kansas, 1902	2	1	Southern Illinois, 1966	2	1
Kansas City AC, 1907	0	1	Southern Methodist, 1956	4	1
Kansas State, 1947	2	1	Stanford, 1935	3	2
Kentucky, 1956	1	2	Syracuse, 1958	1	0
Knox, 1922	4	0	Temple, 1956	1	0
LaSalle, 1955	0	1	Tennessee, 1968	1	0
Lawrence Tech., 1950	0	1	Tennessee Tech., 1970	1	0
Leander-Clark, 1912	3	0	Texas Christian, 1947	2	0
Lewis Institute, 1906	0	2	Texas-El Paso, 1966	1	1
Lombard, 1917	2	1	Texas Tech, 1959	2	0
Loyola-Chicago, 1936	4	3	Toledo, 1938	0	2
Loyola-L.A., 1956	1	0	UCLA, 1951	4	0
Loyola-N.O., 1957	2	0	USC, 1954	3	1

School, first meeting	W	L
Upper Iowa, 1902	4	0
Utah, 1965	0	1
Utah State, 1950	1	0
Villanova, 1962	0	1
Wabash, 1925	2	2
Washington, 1956	2	3
Washington (Mo.), 1929	9	1
Washington State, 1964	1	0
Wayne, 1940	0	1
Western College, 1902	2	0
Western Illinois, 1944	2	0

School, first meeting	W	L
Western Michigan, 1936	2	2
Western Reserve, 1949	2	0
Western Virginia, 1957	1	0
Wichita State, 1956	2	2
Wilton, 1902	2	0
Wisconsin, 1909	39	41
Wisc.-Milwaukee, 1969	1	0
Wyoming, 1959	3	1
Xavier, 1938	1	0
Totals	763	556

Non-Conference Series Scores

Hardin-Simmons	1914 W 22-15*	1935 W 31-24	1936 W 35-22
(1-0)	W 21-16	1942 L 34-41	1966 W 66-60
1971 W 90-77*	1915 W 27-12*	1943 L 43-52	W 69-51*
UCLA	W 23-18	1944 W 50-33*	1967 W 90-83
(4-0)	1916 W 26-9 *	1945 W 61-45	W 83-75*
1951 W 80-63*	W 22-14	1946 W 61-35*	1968 L 65-74*
1954 W 65-60	1917 L 12-24	1954 L 70-81	1969 L 74-89
1961 W 71-65	W 15-13*	1955 W 84-61*	1970 W 101-78*
1965 W 87-82	1918 W 24-9 *	1956 W 60-51*	1971 L 70-72
	W 22-20	1957 L 43-67	
Texas-El Paso	1919 W 27-17*	1971 L 71-73	Kansas
(1-1)	W 29-20	Drake	(2-1)
1966 L 68-86	1920 W 27-15*	(18-5)	1902 W 40-27*
1968 W 59-53*	W 26-19	1909 W 36-13	1906 W 29-19*
Duquesne	1921 L 16-20*	1910 W 26-8	1942 L 51-53*
(2-0)	L 18-26	W 43-7 *	
1930 W 35-26*	1934 W 30-12*	1911 W 30-20*	Loyola-Chicago
1970 W 98-87*	1935 L 33-41	W 21-15	(4-3)
Nevada	1971 W 87-68*	1916 W 31-24*	1936 W 33-26
(1-0)		W 22-14	1951 W 61-56
1962 W 88-46*	Nebraska	1930 W 25-18	1955 W 89-79
Iowa State	(9-7)	L 25-26*	1963 L 68-86
(19-4)	1907 L 17-27	1931 W 21-20	1964 L 71-85
1910 W 30-27	W 32-29*	1932 W 24-18	1967 L 87-98
W 24-12*	1908 W 39-26*	1933 W 52-11	1968 W 71-65*
1913 W 27-15*	1930 L 26-41	1934 W 39-18	
W 21-13	1932 W 34-29*	1935 L 24-45	*at Iowa City

Best Attendance Years

All Games				Home Games			
Year	Games	Attendance	Average	Year	Games	Attendance	Average
1970	25	290,742	11,629	1970	12	160,791	13,399
1947	19	216,607	11,400	1969	12	155,700	12,975
1969	24	267,174	11,132	1956	13	165,775	12,752
1948	19	206,620	10,875	1971	12	151,000	12,583
1971	24	248,933	10,744	1968	12	145,780	12,148
1966	24	244,079	10,169	1966	12	145,385	12,115

Big Ten Series Scores

Illinois (32-39)	1954 W 79-70 L 51-74*	L 21-23 1925 L 28-30*	L 53-63 1952 W 78-59*
1908 W 46-36*	1955 W 92-80*	L 21-28	L 69-82
1913 L 9-35	W 89-70	1926 W 29-22*	1953 L 72-91*
1924 L 14-26*	1956 W 96-72*	L 20-30	L 61-68
L 19-38	1957 L 70-81	1928 L 33-50	1954 W 82-64
1925 L 15-23	1958 W 70-68	L 39-49*	1955 W 90-75*
W 33-25*	W 83-79*	1929 W 29-27*	1956 W 87-83
1927 L 33-40†	1959 L 97-103	L 30-35	W 84-73*
W 26-24*	L 70-72*	1931 L 20-28*	1957 L 66-82*
1928 W 36-30*	1960 L 70-85	L 18-31	L 76-90
W 41-27	1961 W 78-71*	1932 L 27-35	1958 W 79-75*
1931 L 23-26*	1962 L 81-91*	L 33-34*	1959 W 88-78
L 13-31	W 88-78	1934 L 25-34	1960 L 74-87
1933 W 30-27*	1963 L 76-85*	W 29-26*	L 64-79*
L 16-44	L 69-73	1935 L 35-40*	1961 W 74-67
1934 W 36-14*	1964 L 70-87*	L 30-34	L 69-78*
L 31-35	L 67-90	1937 L 24-28	1962 L 69-72
1936 W 27-26*	1965 L 80-97	L 34-38*	1963 L 71-72*
L 14-36	W 94-84*	1938 W 48-39*	1964 W 72-71
1937 L 28-42	1966 L 90-106	W 36-32	W 82-75*
L 29-40*	1967 W 96-89*	1939 L 39-50*	1965 L 76-85*
1939 L 26-34	1968 L 63-66	L 40-45	W 74-68
1940 W 62-47*	W 61-56*	1940 L 30-45	1966 L 61-73
1941 L 53-56	1969 L 69-98	L 42-46*	W 82-77*
1942 L 35-42	W 74-53*	1941 L 40-50	1967 W 84-73*
W 46-32*	1970 W 83-81	L 36-47*	W 75-74†
1943 L 41-61	1971 W 92-84*	1942 W 55-52*	1968 W 78-70
L 34-66		1943 L 55-71*	1969 W 91-72*
1944 W 56-51*	Indiana	L 43-64*	1970 W 100-93*
W 53-44*	(40-52)	1944 W 43-42	W 104-89
1945 L 42-43	1909 L 12-18	W 52-40	1971 L 84-86*
W 43-37*	1915 W 29-20*	1945 W 56-51*	L 88-104
1946 W 41-39*	W 20-19	W 45-40	
L 51-57	1917 L 12-21*	1946 L 39-45	Michigan
1947 L 36-45	L 7-12	L 46-49*	(31-37)
1948 W 70-61*	1918 L 25-29*	1947 L 48-50	1921 L 15-19
1949 L 49-80	W 13-11	W 68-46*	1922 L 20-22*
1950 W 70-65	1919 L 14-23*	1948 W 61-52*	L 19-25
1951 L 69-72*	W 21-12	L 47-49	1923 W 18-17*
L 53-69	1920 W 28-20*	1949 L 39-50	W 20-18
1952 W 73-68*	L 19-25	L 60-76*	1924 L 18-23
L 62-78	1921 W 22-15*	1950 W 65-64*	L 25-27*
1953 L 63-80	W 26-17	W 59-53	1926 L 16-22
W 67-62*	1923 W 19-13*	1951 L 54-63*	W 24-21*

1927 L 22-41*	1964 L 61-69*	1967 L 70-79	W 17-15
L 29-31†	1965 L 66-81	1968 W 76-71	1928 L 32-33
1929 L 25-36*	1966 W 91-82*	W 76-58*	W 30-27*
L 18-25	L 88-103	1969 W 77-76*	1929 W 36-23*
1932 L 22-40	1967 W 91-81*	L 60-78	L 22-37
L 27-35*	W 83-76	1970 W 103-77*	1931 L 22-26*
1933 L 25-33*	1968 W 99-86	1971 L 81-84	L 14-36
W 36-35	L 70-71*		1932 L 22-24
1935 L 27-29*	1969 L 92-99†	Minnesota	L 22-24*†
W 37-25	L 85-86*	(45-65)	1934 L 38-39
1936 L 27-31†	1970 W 107-99	1902 L 10-47	W 33-30*
L 25-31*	1971 L 82-86*	1905 L 17-48	1935 W 39-33†
1938 W 38-20		1908 L 12-31*	L 35-36*
W 37-25*	Michigan State	L 25-33	1937 L 37-43*
1939 L 32-47*	(23-16)	1909 W 37-14*	L 25-44
1940 L 38-47	1938 L 37-52	L 18-23	1938 L 26-28
1941 L 29-40*	1941 W 40-34	1910 L 9-20	L 29-30*
1942 W 40-34	1945 W 66-29*	L 18-22*	1939 L 29-36
W 59-38*	1949 L 43-49	1911 L 7-37	L 43-54
1945 W 29-27	1950 W 73-53*	L 15-36*	1940 L 34-42*
W 50-37*	1951 W 46-42*	1912 L 17-36*	L 29-34
1947 W 55-46*	W 65-52	L 10-29	1941 W 41-34
1948 L 35-51	1952 W 61-60	1913 L 10-26*	W 46-39*
1949 W 63-62*	W 64-52*	W 12-9	1942 L 39-41
1950 L 46-66	1953 L 61-68	1914 W 16-14*	1943 L 45-46*
1951 W 70-48*	L 48-60*	L 13-34	W 48-41*
W 65-55	1954 W 73-63*	1915 L 14-29	1944 W 37-34
1952 W 54-46	W 60-48	L 9-11*	W 37-29
W 82-59*	1955 W 94-81*	1916 L 11-26	1945 W 41-34*
1953 W 85-77*	W 78-69	L 13-21*	W 55-48
L 61-66	1956 L 64-65*	1917 L 15-39*	1946 W 63-61*†
1954 W 93-78*	1957 L 67-77	L 19-31	L 47-58
W 86-68	1958 L 84-90	1918 L 18-33	1947 W 77-64*
1955 W 96-84	L 65-83*	W 25-21*	L 55-59
L 58-74	1959 W 80-68*	1919 L 18-28*	1948 L 56-72
1956 W 78-67	L 74-84	L 22-36	W 54-50*
1957 L 79-83*	1960 W 92-79*	1920 L 19-21	1949 L 45-61*
1958 L 65-73*	L 80-90	W 30-5 *	L 49-54
L 92-95	1961 W 86-72*	1921 L 19-24	1950 W 64-62
1959 W 78-74*	L 64-74	L 14-17*	L 49-64*
L 86-90	1962 W 59-51*	1922 L 16-24	1951 W 69-47
1960 W 68-53*	1963 W 60-59	W 29-21*	1952 W 76-59*
1961 W 50-46	1964 L 82-107	1923 W 32-16	1953 L 58-65
1962 L 55-56	L 89-107*	W 29-24*	W 81-79*†
W 68-63*	1965 W 85-78	1925 W 27-19*	1954 L 55-59*
1963 L 67-88*	W 111-68*	L 18-20	W 86-82†
L 70-78	1966 W 90-76*	1926 W 21-14*	1955 L 80-81*

1970 W 97-89	1945 W 61-34*	L 84-110	W 44-39
W 113-92*	W 48-43		1947 L 62-63*
1971 L 76-97*	1946 W 49-43	Wisconsin	L 53-60
L 71-80	W 43-41*	(39-41)	1948 L 51-60
Purdue	1947 L 46-52	1909 L 9-30	W 62-40*
(40-40)	W 51-48*	1912 L 12-38*	1949 W 61-60*
1909 L 11-17	1948 W 60-49*	L 5-30	L 47-70
1917 L 17-19††	W 41-33	1916 L 31-36*†	1950 L 62-66*†
1918 W 33-19*	1949 L 53-73*	L 19-38	L 44-53
L 22-46	L 46-54	1918 L 22-36*	1951 W 73-60
1919 L 19-32	1950 L 55-64	L 19-34	1952 L 75-78*
1920 L 19-25	W 66-60*	1919 L 19-28	1953 L 70-75
L 26-42*	1951 W 73-63*	W 29-27*	W 83-66*
1921 W 20-15*	1952 W 90-67	1920 L 18-35*	1954 W 71-54*
L 19-21	1953 L 58-69	W 21-20	1955 W 86-69
1922 L 22-36*	W 65-56*	1922 L 15-18*	1956 W 78-74
L 26-27	1954 W 70-62	W 24-18	W 80-66*
1924 W 36-26*	1955 W 76-67*	1924 W 22-19*	1957 W 70-47
W 40-31	1956 W 67-63	L 26-36	L 59-60*
1925 W 35-19*	W 88-75*	1925 L 15-16*	1958 W 74-61*
L 23-35	1957 W 74-67*	L 23-25	1959 W 94-84
1927 W 39-25	L 63-72	1927 L 21-24	1960 W 71-64
W 33-28*	1958 L 59-65	W 26-17*	L 58-63*
1928 L 28-46*	1959 W 66-62*	1928 L 21-31*	1961 W 76-68
L 20-44	1960 W 63-54*	L 17-20	W 63-61*
1931 W 25-23*	W 78-68	1931 L 13-24	1962 L 79-91
L 19-39	1961 L 41-47	W 19-17*	W 81-64*
1933 W 35-33	W 73-62*	1933 L 19-21	1963 W 65-56*
W 34-30*	1962 L 75-82	W 31-25*	L 69-75
1934 W 38-36	1963 W 73-64*	1934 W 32-26*	1964 L 61-79
L 33-45*	1964 L 75-90	L 32-35	1965 W 92-62*
1936 L 38-39*	W 81-74*	1936 L 21-27	1966 L 68-69
L 38-54	1965 W 101-85*	W 32-25*	W 80-70*
1937 L 31-35*	L 68-76	1937 L 23-29	1967 L 95-96*†††
L 29-54	1966 L 58-66	W 43-35*	W 90-87†
1939 W 49-41*	1967 L 75-78*	1939 L 24-28	1968 W 69-61*
1940 L 29-50	1968 W 94-87*	1940 W 37-35*	1969 L 74-84
1941 L 49-52*††	L 73-86	1941 L 35-49	1970 W 92-74
1942 L 44-45	1969 L 87-99	1942 W 49-45*	W 119-100*
W 42-36*	L 85-97*	L 45-62	1971 W 93-91
1943 L 35-49	1970 W 94-88*	1945 W 54-53*	L 83-89*
1944 W 46-43*	W 108-107	W 68-38	*at Iowa City
	1971 L 85-87*	1946 W 57-50*	†overtime

Scores of Recent Years

1955-56 (W 20, L 6)

*Nebraska	W 60-51
*SMU	W 80-62
Colorado	L 57-60
*Loyola (Cal.)	W 84-61
Washington	L 71-76
Stanford	L 52-54
California	L 45-70
*Mich. State	L 64-65
Ohio State	W 88-73
*Minnesota	W 84-62
Michigan	W 78-67
Purdue	W 67-63
*Wichita	W 98-86
Wisconsin	W 78-74
N'western	W 70-65
*Purdue	W 88-75
*Wisconsin	W 80-66
Indiana	W 87-83
Minnesota#	W 83-73
*N'western	W 86-68
*Illinois	W 96-72
*Indiana	W 84-73
*Morehead St.	W 97-83
*Kentucky	W 89-77
Temple	W 83-76
San Fran.	L 71-83

1956-57 (W 8, L 14)

Nebraska	L 43-67
*Denver	W 58-57
*Loyola (La.)	W 80-65
*Kansas State	W 85-83
N.C. State	L 70-84
DePaul#	L 72-73
W. Virginia	W 79-76
*Ohio State	L 60-72
Illinois	L 70-81
*Minnesota	W 89-66
Wisconsin	W 70-47
N'western	L 63-70
*Indiana	L 66-82
Wash. (Mo.)	L 54-62
*Purdue	W 74-67
Mich. State	L 67-77
Indiana	L 76-90
*N'western	W 74-66
Minnesota	L 81-102
*Michigan	L 79-83
Purdue	L 63-72
*Wisconsin	L 59-60

1957-58 (W 13, L 9)

*SMU	W 65-60
*Arizona	W 80-63
Kansas State	L 69-86
Wichita	L 78-81
*Ore. State#	W 77-67
Cornell U.	W 73-68
Syracuse	W 58-52
*Michigan	L 65-73
Illinois	W 70-68
*N'western#	L 80-82
*Indiana	W 79-75
Ohio State	L 64-70
Minnesota	W 73-71
*Ohio State	W 66-64

*Miami (O.)	W 82-77
Mich. State	L 84-90
*Wisconsin	W 74-61
*Illinois	W 83-79
N'western	W 86-78
*Mich. State	L 65-83
Purdue	L 59-65
Michigan	L 92-95

1958-59 (W 10, L 12)

*Colorado	W 67-46
SMU	L 55-65
Oklahoma	L 57-80
*Texas Tech	W 75-73
California	L 52-71
*Washington	L 68-81
Wyoming	W 82-74
Oregon St.	L 71-72
N'western	L 77-80
*Mich. State	W 80-68
Illinois	L 97-103
Indiana	W 88-78
*N'western#	L 96-99
Ohio State	L 72-86
*Michigan	W 78-74
*Minnesota	W 69-65
Wisconsin	W 94-84
Michigan	L 86-90
*Ohio State	W 91-79
*Purdue	W 66-62
*Illinois	L 70-72
Mich. State	L 74-84

1959-60 (W 14, L 10)

Evansville	W 86-84
*SMU	W 89-58
*North Dakota	W 79-43
Texas Tech	W 76-66
Colorado	L 68-76
*Oklahoma	W 62-49
*Loyola, La.	W 68-60
St. John's	W 91-84
NYU	W 80-75
Cincinnati	L 83-96
Minnesota	L 61-70
Wisconsin	W 71-64
*N'western	W 73-59
*Mich. State	W 92-79
*Purdue	W 63-54
Mich. State	L 80-90
*Minnesota	L 72-87
Indiana	L 74-87
Ohio State	L 47-75
*Wisconsin	L 58-63
*Indiana	L 64-79
Purdue	W 78-68
Illinois	L 70-85
*Michigan	W 68-53

1960-61 (W 18, L 6)

*S.D. State	W 77-75
Evansville	W 83-71
*St. Louis	L 55-61
*Creighton	W 89-71
*Wyoming	W 78-67
*Arizona	W 105-64
Calif.##	W 83-80
So. Calif.	W 70-62

UCLA	W 71-65
*Minnesota	W 71-46
Wisconsin	W 76-68
*Mich. State	W 86-72
*Illinois	W 78-71
Purdue	L 41-47
Cincinnati	L 60-77
Indiana	W 74-67
*Wisconsin	W 63-61
*Ohio State	L 61-62
Michigan	W 50-46
Minnesota	W 61-43
*Purdue	W 73-62
*Indiana	L 69-78
Mich. State	L 64-74
N'western	W 63-62

1961-62 (W 13, L 11)

Evansville	L 59-65
*Miami (O.)	W 75-55
*S.D. State	W 69-52
St. Louis	L 61-79
*L.A. State	W 82-72
*Nevada	W 88-46
Penn State	W 67-48
Penn.	W 72-64
Villanova	L 56-69
Wisconsin	L 79-91
*N'western	W 74-69
*Minnesota	W 65-63
Michigan	L 55-56
N'western	W 72-60
*Creighton	L 67-68
Ohio State	L 63-89
*Illinois	L 81-91
Purdue	L 75-82
Indiana	L 69-72
*Mich. State	W 59-51
*Michigan	W 68-63
*Ohio State	L 62-72
Illinois	W 88-78
*Wisconsin	W 81-64

1962-63 (W 9, L 15)

Evansville	W 62-57
St. Louis	L 58-65
*Ohio U.	L 54-62
*Clemson	W 74-64
Kentucky	L 69-94
Ore. State	L 55-61
Arizona	W 57-56
Oregon	W 62-48
Ore. State	L 57-64
*Illinois	L 76-85
*Michigan	L 67-88
Minnesota	L 58-83
*Wisconsin	W 65-56
*Ohio State	W 81-74
Mich. State	W 60-59
Loyola (Ill.)	L 68-86
N'western##	W 66-65
*Purdue	W 73-64
*Indiana	L 71-72
Ohio State	L 70-83
Michigan	L 70-78
*N'western	L 66-76
Wisconsin	L 69-75
Illinois	L 69-73

1963-64 (W 8, L 15)

*S. Dakota	W 85-66
Evansville	W 75-72
*St. Louis	W 79-77
*SMU	W 73-70
*Creighton#	L 72-77
Colo. State	L 56-61
LSU	L 81-92
Wash. State	W 74-66
Indiana	W 72-71
*Illinois	L 70-87
Wisconsin	L 61-79
Purdue	L 75-90
Loyola (Ill.)	L 71-85
*Minnesota	L 71-76
*Indiana	W 82-75
Mich. State	L 82-107
*Ohio State	L 82-99
*Mich. State	L 89-107
N'western	L 76-98
Minnesota	L 63-70
*Purdue	W 81-74
*Michigan	L 61-69
Illinois	L 67-90

1964-65 (W 14, L 10)

*S. Dakota	W 93-68
Kentucky	L 77-85
Evansville	L 83-90
*Creighton	W 98-83
*Providence	L 70-71
*N. Dakota	W 106-65
So. Calif.	W 71-65
Utah	L 88-92
Minnesota	W 76-74
Wisconsin	W 92-62
Mich. State	W 85-78
*Indiana	L 76-85
*Mich. State	W 111-68
Indiana	W 74-68
UCLA	W 87-82
*N'western	W 78-72
Michigan	L 66-81
Ohio State	W 82-81
*Purdue	W 101-85
Illinois	L 80-97
Purdue	L 68-76
*Minnesota	L 70-78
*Illinois	W 94-84
Minnesota#	L 84-85

1965-66 (W 17, L 7)

*Pepperdine	W 111-50
Evansville	W 80-73
*So. Illinois	W 69-58
*Creighton	W 103-77
Drake	W 66-60
*Washington	W 99-70
*Drake	W 69-51
Arkansas	W 77-75
Tex. Western	L 68-86
Wisconsin	L 68-69
*N'western	W 70-58
Indiana	L 61-73
*Mich. State	W 90-76
*Ohio State	W 98-89
Detroit	W 107-73
Purdue	L 58-66
N'western	L 73-81
*Minnesota	W 96-87
Ohio State	W 86-80

*Michigan	W 91-82
*Wisconsin	W 80-70
Michigan	L 88-103
Illinois	L 90-106
*Indiana	W 82-77

1966-67 (W 16, L 8)

Washington	W 66-50
Washington	L 65-76
Creighton	L 68-69
Drake	W 90-83
*Drake	W 83-75
*California	W 72-62
*Stanford	W 77-74
*Wichita	W 94-76
Cincinnati	W 78-69
*Indiana	W 84-73
Mich. State	L 70-79
N'western	L 88-90
*Michigan	W 91-81
Loyola (Ill.)	L 87-98
*Illinois	W 96-89
Ohio State	W 73-72
*N'western	W 80-71
*Wis.###	L 95-96
Minnesota	L 86-88
Indiana#	W 75-74
*Purdue	L 75-78
*Ohio State	W 90-56
Wisconsin#	W 90-87
Michigan	W 83-76

1967-68 (W 16, L 9)

*Bowl. Green	W 79-73
*So. Illinois	W 61-49
*Drake	L 65-74
*Tex. Western	W 59-53
California	L 73-79
Stanford	L 86-87
Tennessee#	W 64-59
Wyoming##	L 87-94
St. Louis#	W 80-77
N'western	L 67-76
*Loyola (Ill.)	W 71-65
*Ohio State#	W 74-72
*Minnesota	W 82-70
Mich. State	W 76-71
Illinois	L 63-66
*Purdue	W 94-87
Michigan	W 99-86
*Wisconsin	W 69-61
Purdue	L 73-86
Indiana	W 78-70
*Mich. State	W 76-58
*Illinois	W 61-56
Minnesota	W 91-72
*Michigan	L 70-71
Ohio State	L 81-85

1968-69 (W 12, L 12)

*Cal Poly	W 91-73
*N. Michigan	W 99-69
*UW, Mil.	W 116-80
Wichita	L 88-93
Drake	L 74-89
*N. Dakota	W 91-59
*Creighton	W 100-73
Houston	W 95-87
Duke	L 82-85
Michigan#	L 92-99
*Indiana	W 91-72

*Mich. State	W 77-76
*Minnesota	W 89-68
Davidson	W 76-61
Purdue	L 87-99
Illinois	L 69-98
*N'western#	W 84-80
*Michigan	L 85-86
Mich. State	L 60-78
Ohio State	L 81-88
*Illinois	W 74-53
*Purdue	L 85-97
Minnesota	L 65-71
Wisconsin	L 74-84

1969-70 (W 20, L 5)

S. Illinois	L 67-73
*St. Fran. (Pa.)	W 81-68
*Duquesne	W 98-87
Cincinnati	L 105-114
*Creighton	L 88-97
*Drake	W 101-78
St. John's (NY)	L 55-57
Hawaii	W 111-60
*Purdue	W 94-88
Michigan	W 107-99
Wisconsin	W 92-74
*Tenn. Tech	W 96-68
*Indiana	W 100-93
*Minnesota	W 90-77
Indiana	W 104-89
*Wisconsin	W 119-100
*Mich. State	W 103-77
Illinois	W 83-81
Ohio State	W 97-89
*N'western	W 116-97
Purdue	W 108-107
*Ohio State	W 113-92
N'western	W 115-101
J'ville	L 103-104
Notre Dame	W 121-106

1970-71 (W 9, L 15)

Creighton	L 73-98
Nebraska	L 71-73
*Ashland	W 82-56
Drake	L 70-72
Bowling Gr.	W 89-78
*Cincinnati#	L 70-73
*Hardin-Sim.	W 90-77
*Iowa State	W 87-68
*Wyoming	W 87-84
*Ohio State	L 76-97
Mich. State	L 81-84
Cincinnati	L 69-73
N'western	W 87-85
*Illinois	W 92-84
Wisconsin	W 93-91
*Indiana	L 84-86
Minnesota	L 76-88
*Purdue	L 85-87
Ohio State	L 71-80
*Wisconsin	L 83-89
*N'western	W 78-64
Indiana	L 88-104
*Michigan	L 82-86
Purdue	L 84-110

*at Iowa City
#Overtime

Record by Years

Year	Coach	Big Ten				All Games		
		W-L	Pts.	Opp.	Rank	W-L	Pts.	Opp.
1902	Ed Rule					10-2	388	253
1903	Fred Bailey					4-3	158	83
1904	Ed Rule					6-2	187	200
1905	John Chalmers					6-8	348	390
1906	Ed Rule					11-5	584	336
1907	John Griffith					5-5	329	265
1908	Ed Rule					10-6	532	430
1909	John Griffith	1-5	97	133	8	8-7	406	273
1910	John Griffith	2-2	80	59	T5	11-3	341	193
1911	Walter Stewart	2-2	66	101	T5	9-4	296	242
1912	Walter Stewart	0-4	44	133	T7	6-8	246	276
1913	Floyd Thomas	1-5	62	146	8	9-13	350	455
1914	Maury Kent	1-5	101	189	8	9-7	342	374
1915	Maury Kent	2-6	134	174	7	9-8	401	335
1916	Maury Kent	2-4	108	154	7	11-4	369	283
1917	Maury Kent	1-8	139	203	9	7-9	302	310
1918	Maury Kent	4-6	226	301	9	6-8	305	393
1919	Edwin Bannick	4-7	228	278	T7	8-7	337	344
1920	James Ashmore	6-6	272	285	6	9-10	453	433
1921	James Ashmore	6-5	222	217	T6	9-9	414	350
1922	James Ashmore	5-6	263	253	5	11-7	460	369
1923	Sam Barry	11-1	333	225	T1	13-2	413	279
1924	Sam Barry	4-8	291	339	9	7-10	397	445
1925	Sam Barry	5-7	299	275	7	6-10	393	384
1926	Sam Barry	8-4	249	257	T1	12-5	383	359
1927	Sam Barry	7-5	340	321	T4	9-8	481	449
1928	Sam Barry	3-9	357	443	T7	6-11	508	574
1929	Sam Barry	5-7	331	358	7	9-8	495	479
1930	Rollie Williams	(did not compete)				4-13	426	512
1931	Rollie Williams	2-10	232	362	10	5-12	334	464
1932	Rollie Williams	3-9	338	362	9	5-12	459	501
1933	Rollie Williams	8-4	364	359	T3	15-5	670	535
1934	Rollie Williams	6-6	397	383	T5	13-6	681	539
1935	Rollie Williams	6-6	411	398	6	10-9	638	623
1936	Rollie Williams	5-7	353	385	T6	9-10	590	600
1937	Rollie Williams	3-9	375	443	T8	11-9	689	678

Year	Coach	Big Ten				All Games		
		W-L	Pts.	Opp.	Rank	W-L	Pts.	Opp.
1938	Rollie Williams	6-6	417	411	T5	11-9	705	705
1939	Rollie Williams	3-9	417	460	10	8-11	674	694
1940	Rollie Williams	4-8	448	488	8	9-12	753	787
1941	Rollie Williams	4-8	519	538	8	12-8	886	786
1942	Rollie Williams	10-5	721	648	T2	12-8	942	862
1943	Rollie Williams	3-9	535	630	9	7-10	807	854
1944	Pops Harrison	9-3	604	514	T2	14-4	951	726
1945	Pops Harrison	11-1	592	485	1	17-1	1030	706
1946	Pops Harrison	8-4	606	550	T3	14-4	1034	749
1947	Pops Harrison	5-7	652	627	T6	12-7	1080	903
1948	Pops Harrison	8-4	643	612	2	15-4	1082	902
1949	Pops Harrison	3-9	609	754	8	10-10	1102	1098
1950	Pops Harrison	6-6	695	741	5	15-7	1410	1290
	Frank O'Connor (Jan. 1)							
1951	Rollie Williams	9-5	916	833	3	15-7	1430	1310
1952	Frank O'Connor	11-3	1014	902	2	19-3	1535	1358
1953	Frank O'Connor	9-9	1256	1271	6	12-10	1535	1503
1954	Frank O'Connor	11-3	1024	922	2	17-5	1559	1415
1955	Frank O'Connor	11-3	1142	1047	1	19-7	2071	1864
1956	Frank O'Connor	13-1	1133	979	1	20-6	2020	1818
1957	Frank O'Connor	4-10	991	1035	8	8-14	1532	1602
1958	Frank O'Connor	7-7	1040	1054	6	13-9	1622	1608
1959	Sharm Scheuerman	7-7	1138	1124	T5	10-12	1665	1686
1960	Sharm Scheuerman	6-8	971	1013	T6	14-10	1753	1704
1961	Sharm Scheuerman	10-4	930	859	T2	18-6	1701	1552
1962	Sharm Scheuerman	7-7	991	1001	T4	13-11	1687	1619
1963	Sharm Scheuerman	5-9	961	1031	8	9-15	1577	1688
1964	Sharm Scheuerman	3-11	1032	1192	9	8-15	1698	1858
1965	Ralph Miller	8-6	1161	1100	5	14-10	2010	1875
1966	Ralph Miller	8-6	1131	1117	T3	17-7	1980	1790
1967	Ralph Miller	9-5	1176	1114	3	16-8	1956	1846
1968	Ralph Miller	10-4	1073	1002	T1	16-9	1879	1797
1969	Ralph Miller	5-9	1113	1149	T8	12-12	2025	1918
1970	Ralph Miller	14-0	1441	1264	1	20-5	2467	2176
1971	Dick Schultz	4-10	1160	1235	T7	9-15	1947	1987
Totals		364-369				763-556		

Iowa Fieldhouse Records

Iowa Best in Parentheses If Not Already Mentioned

Individual Records

Points—53 by Rick Mount (22 FG, 9 FT), Purdue, 1/3/70
(49 by John Johnson (20 FG, 9 FT) vs Northwestern, 2/24/70)
Field Goals Made—22 by Rick Mount (43 att.), Purdue, 1/3/70
(20 by John Johnson (33 att.) vs Northwestern, 2/24/70)
Field Goals Attempted—43 by Rick Mount (22 made), Purdue, 1/3/70
(33 by John Johnson (20 made) vs Northwestern, 2/24/70)
Field Goal Percentage—.909 by Jim McConnell (10 of 11) vs Minnesota,
1/12/57
Free Throws Made—21 by Terry Dischinger (24 att.), Purdue, 2/27/61
(16 by Charles Darling (21 att.), vs Minnesota, 1/19/52)
Free Throws Attempted—24 by Donnie Gaunce (14 made), Morehead State,
3/16/56; Terry Dischinger (21 made), Purdue, 2/27/61
(21 by Charles Darling (16 made) vs Minnesota, 1/19/52)
Free Throw Percentage—1.000 by Sam Williams (12 of 12) vs Ohio State,
3/4/67
Rebounds—30 by Charles Darling vs Wisconsin, 3/3/52

Team Records

Points/Half—65 vs Michigan State (first), 1/16/65
Points/Game—119 vs Wisconsin, 2/10/70
Points/Two teams—219, Iowa (119) vs Wisconsin (100), 2/10/70
Field Goals Made—48 vs Northwestern (96 att.), 2/24/70
Field Goals Made/Two teams—85, Iowa (45) vs Wisconsin (40), 2/10/70
Field Goals Attempted—107 by Indiana (28 made), 2/26/49; Michigan (27
made), 12/13/52
(104 vs UCLA (32 made), 12/23/50)
Field Goals Attempted/Two teams—194, Iowa (96) vs Northwestern (98),
1/24/59
Field Goal Percentage—.723 by Minnesota (34 of 47), 1/25/60
(.597 vs North Dakota (37 of 62), 12/19/68)
Free Throws Made—41 vs Drake (43 att.), 12/22/69
Free Throws Made/Two Teams—68, Iowa (35) vs Morehead State (33),
3/16/56
Free Throws Attempted—56 vs Indiana (30 made), 12/22/52
Free Throws Attempted/Two teams—105, Iowa (52) vs Morehead State
(53), 3/16/56
Free Throw Percentage—.953 vs Drake (41 of 43), 12/22/69
Rebounds—76 vs Ohio State, 2/14/55
Rebounds/Two teams—119, Iowa (75) vs Purdue (44), 1/6/51
Personal Fouls—38 by Creighton, 12/11/48
(35 vs Morehead State, 3/16/56)
Personal Fouls/Two teams—68, Iowa (35) vs Morehead State (33), 3/16/56
Disqualifications—6 by Creighton, 12/11/48
(3 vs Michigan, 2/21/66)

HAWKEYE SCHEDULE

HOME

Dec. 1	Hardin-Simmons
Dec. 13	Nevada
Dec. 21	Nebraska
Dec. 30	Drake
Jan. 3	Kansas
Jan. 11	Northwestern
Jan. 29	Minnesota
Feb. 8	Ohio State
Feb. 12	Michigan State
Feb. 15	Illinois
Mar. 4	Purdue
Mar. 11	Michigan

AWAY

Dec. 4	UCLA
Dec. 7	Texas El Paso
Dec. 10	Duquesne
Dec. 18	Iowa State
Jan. 8	Wisconsin
Jan. 22	South Carolina at Chicago Stadium
Jan. 25	Michigan
Feb. 1	Ohio State
Feb. 5	Minnesota
Feb. 19	Indiana
Feb. 26	Michigan State
Mar. 7	Illinois

